

PLAN

HEAVY DUTY HANDHOLE MINIMUM DIMENSIONS (UNHINGED)

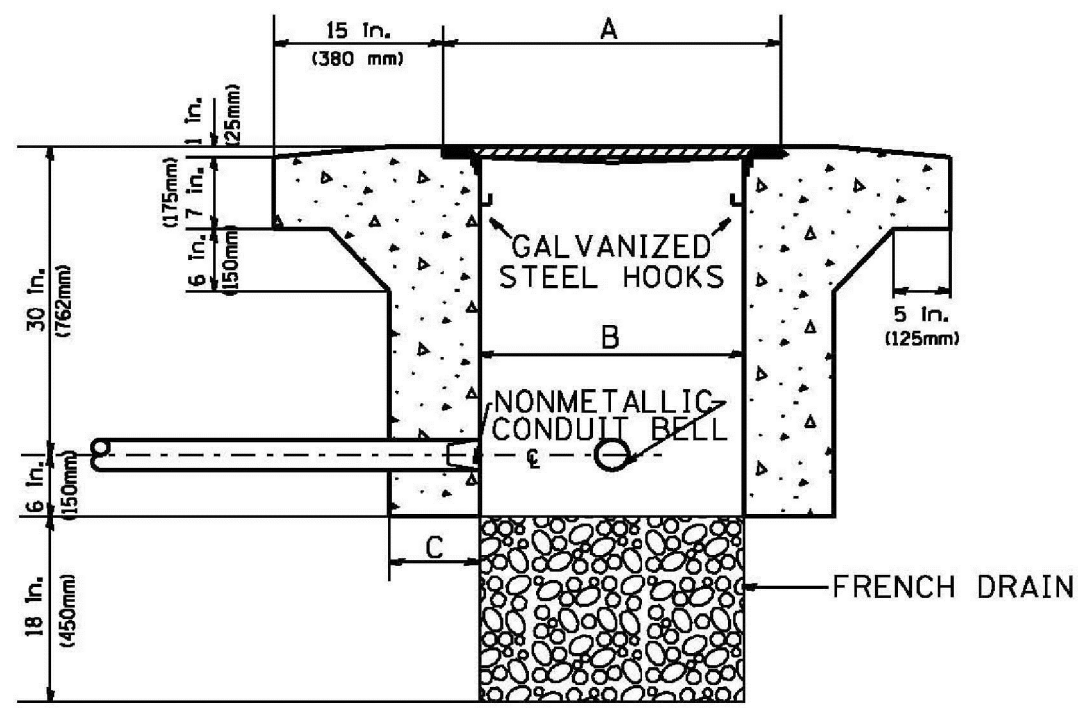
A	28" (711 mm)
B	22" (559 mm)
C	8" (200 mm)

(FRAME AND COVER 260 LBS. (118 Kg.) MIN.)

HEAVY DUTY HANDHOLE SPECIAL MINIMUM DIMENSIONS

A	31.5" (800 mm)
B	30.0" (762 mm)
C	10.0" (250 mm)

(FRAME AND COVER 405 LBS. (184 Kg. (405))



ELEVATION

PC CONCRETE - HEAVY DUTY HAND HOLE

FILE NAME *	USER NAME * mseg	DESIGNED - R.L.	REvised - 04/17	STATE OF ILLINOIS DEPARTMENT OF TRANSPORTATION TRAFFIC SYSTEMS CENTER	PC CONCRETE - HEAVY DUTY HAND HOLE	SCALE: NONE	SHEET OF SHEETS STA. TO STA.	F.A. RTE.	SECTION	COUNTY	TOTAL SHEETS	SHEET NO.
ca:\pwork\p\idot\mseg\09267541\TSC1Y.dgn	FLot SCALE * 1/8"=1'-0" / in.	DRAWN - G.M.	REvised -								177	50g
Default	PLot DATE * 6/2/2014	CHECKED - R.L.	REvised -						CONTRACT NO.			
		DATE - 04/11/16	REvised -						FED. ROAD DIST. NO. ILLINOIS FED. AID PROJECT			