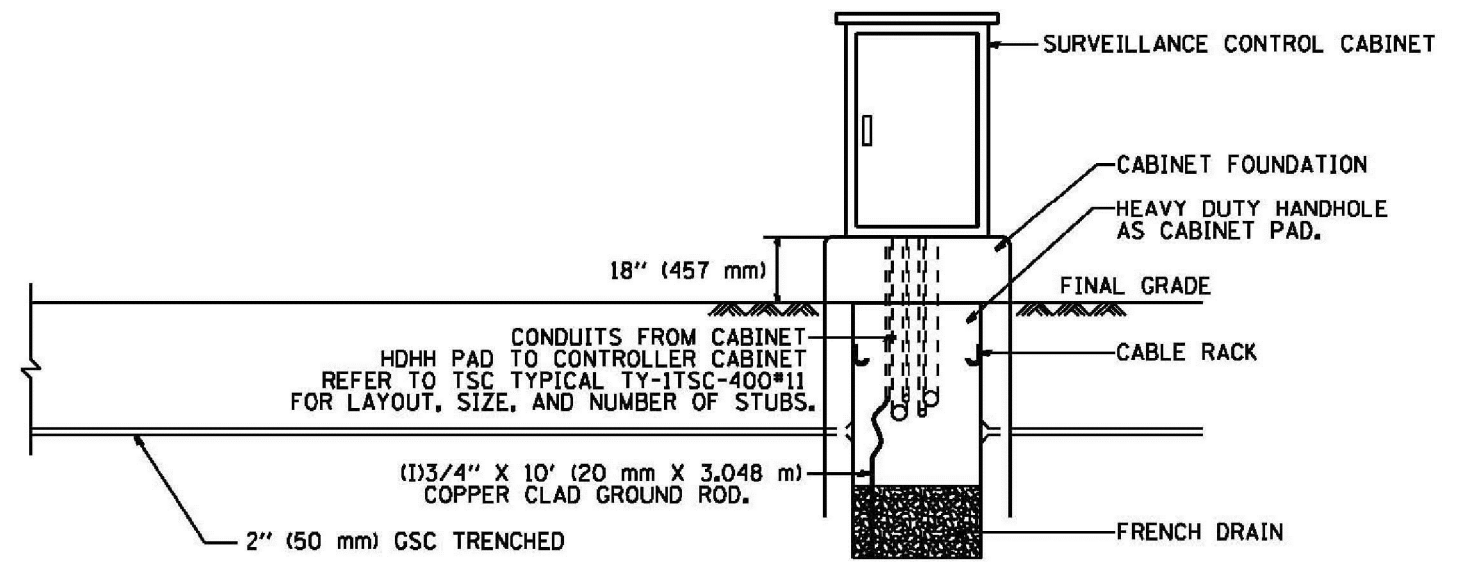
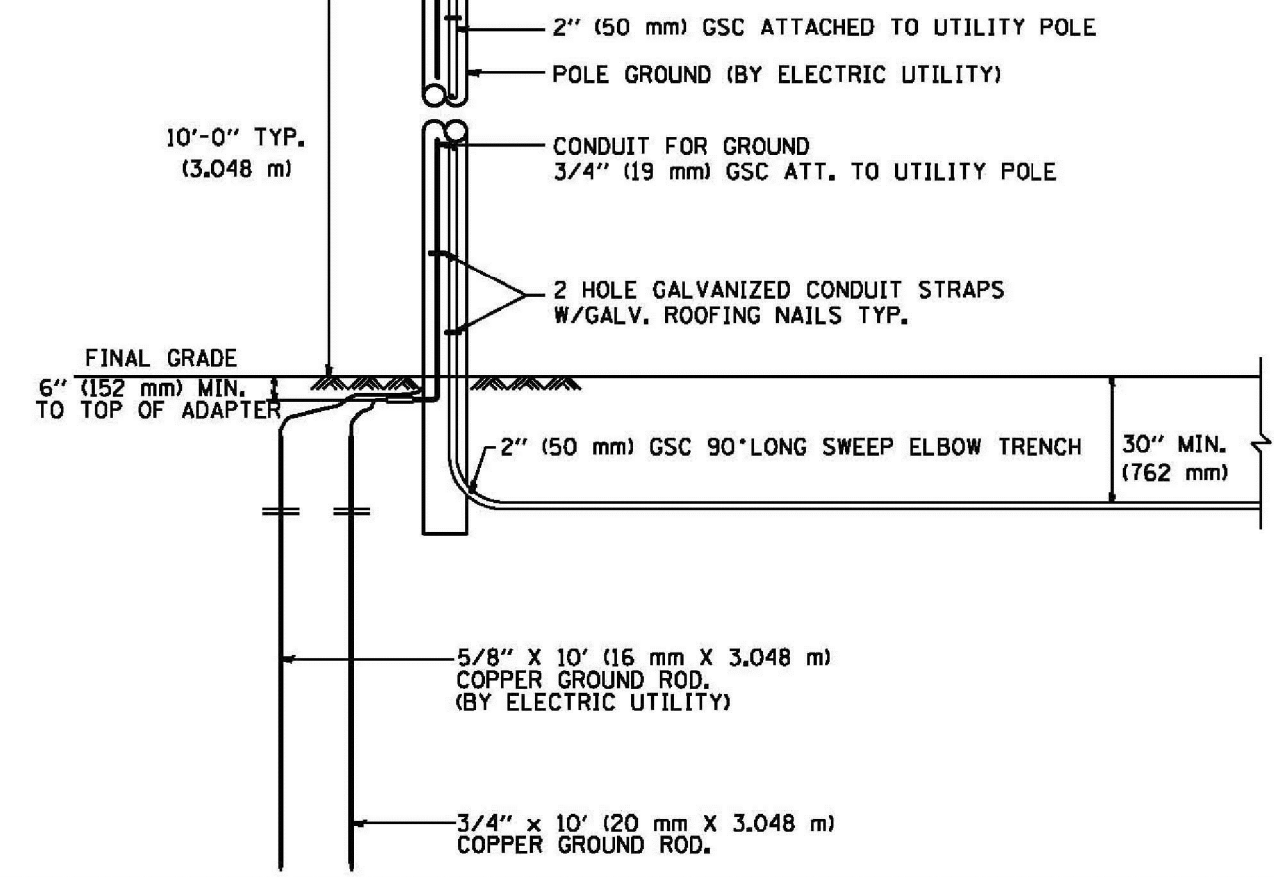


- NOTES:**
- 1.- ALL CONDUIT BUSHINGS SHALL HAVE AN ISOLATED THROAT.
 - 2.- PROVIDE HEAT SHRINK BOOT AT THE TOP OF THE SERVICE ENTRANCE CABLE FOR MOISTURE PROOFING.
 - 3.- ALL CONNECTIONS TO GROUND RODS SHALL BE EXOTHERMIC UNLESS OTHERWISE NOTED.
 - 4.- ATTACH INCOMING ELECTRIC SERVICE CABLE TO UTILITY POLE EVERY 5 FEET USING INSULATED U-NAIL.
 - 5.- PROVIDE CABLE RACK IN HANDHOLES.
 - 6.- ALL CONDUCTORS SHALL BE COPPER.
 - 7.- PROVIDE STAINLESS STEEL HARDWARE TO ATTACH L BRACKETS TO UNISTRUT AND TO SIGN HANGER.

**NTS
DISCONNECT MOUNTING DETAIL**



FILE NAME *	USER NAME * mseg	DESIGNED - RL	REVISD -	STATE OF ILLINOIS DEPARTMENT OF TRANSPORTATION TRAFFIC SYSTEMS CENTER	POLE MOUNTED DISCONNECT MOUNTING DETAILS			F.A. RTE.	SECTION	COUNTY	TOTAL SHEETS	SHEET NO.
ca\poc\work\poc\mseg\09287541\TSC1Y.dgn		DRAWN - G.M.	REVISD -		SCALE: NONE	SHEET	OF	SHEETS	STA.	TO STA.	FED. ROAD DIST. NO.	ILLINOIS FED. AID PROJECT
Default		CHECKED - RL	REVISD -									
		DATE - 03/28/99	REVISD -									