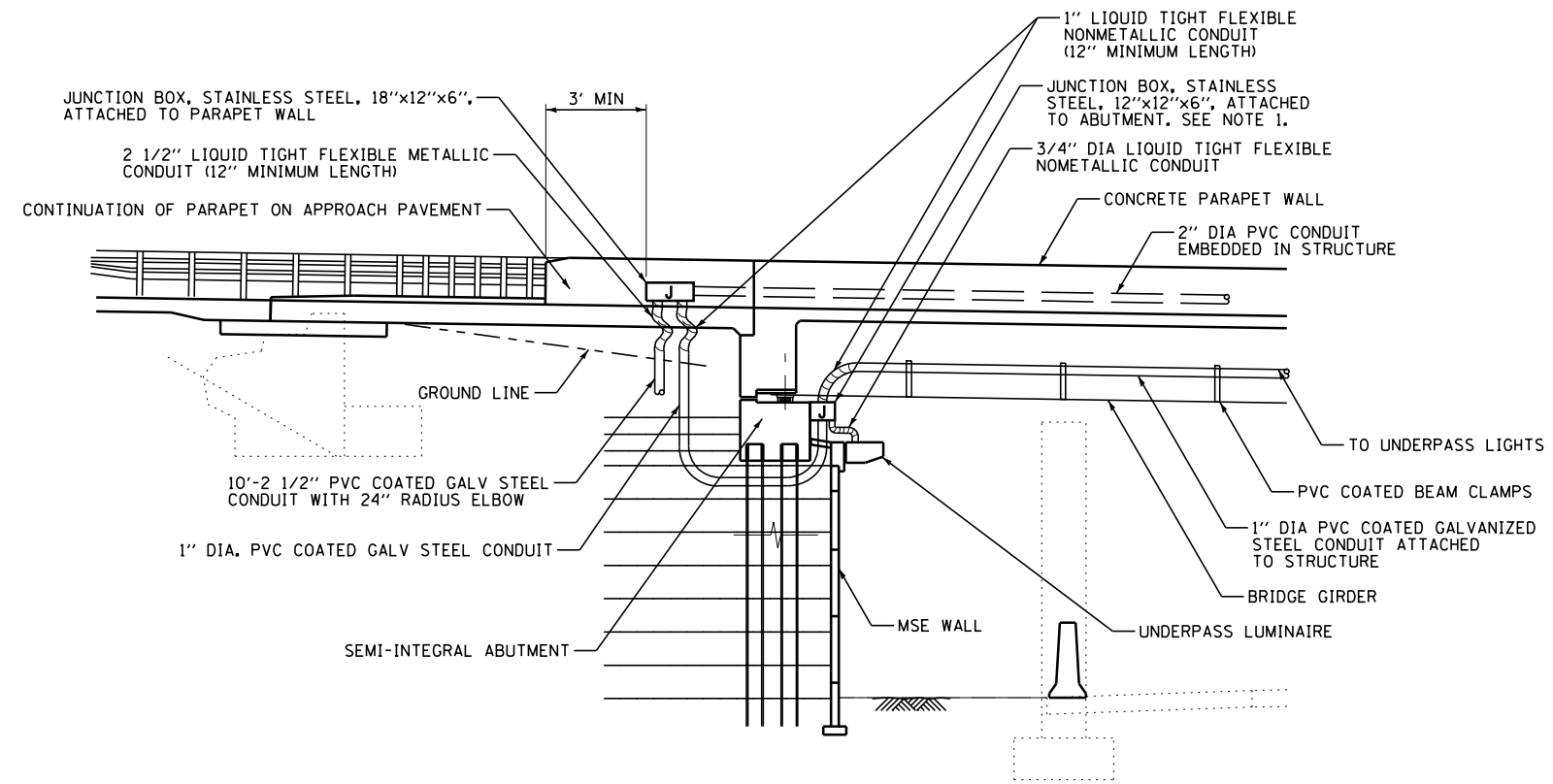


CONDUIT DETAIL
(NORTH ABUTMENT)



CONDUIT DETAIL
(SOUTH ABUTMENT)

NOTE:

- JUNCTION BOX SHALL BE MOUNTED TO STAINLESS STEEL CHANNELS TO ENSURE JUNCTION BOX IS A MINIMUM OF 1" OFF OF SLOPE WALL.

FILE NAME =	DESIGNED - GRR	REVISED -
...\\D160W77-shr-1L171-conduit-detail-SB-XX.dwg	DRAWN - JW	REVISED -
USER NAME = jworthington	CHECKED - GHT	REVISED -
PLOT DATE = 6/23/2014	DATE - 6/23/2014	REVISED -



STATE OF ILLINOIS
DEPARTMENT OF TRANSPORTATION

CONDUIT TRANSITION DETAILS

SCALE: SHEET 7 OF 10 SHEETS STA. TO STA.

F.A.P. RTE.	SECTION	COUNTY	TOTAL SHEETS	SHEET NO.
373	(0707-608 & 611)HB-B	COOK	177	62
CONTRACT NO. 60W77			ILLINOIS FED. AID PROJECT	