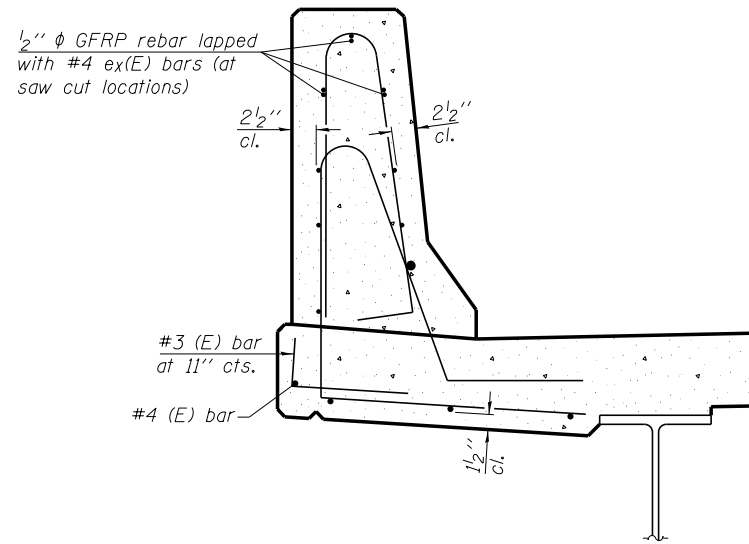


34" F SHAPE PARAPET SECTION
(Showing dimensions)

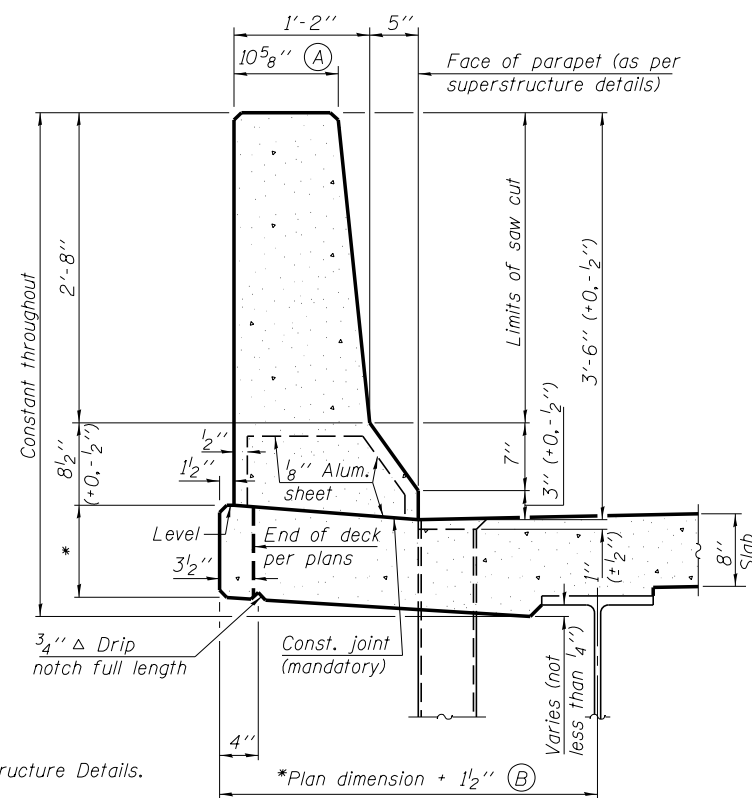
*See Superstructure Details.

*Plan dimension + 1 1/2" (B)



SECTION

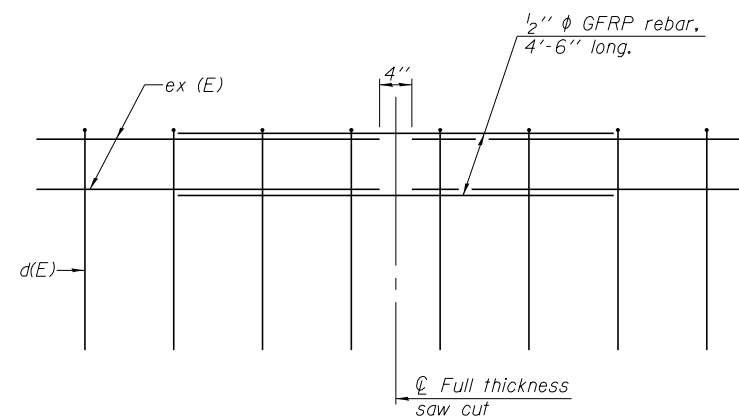
(34" parapet shown - 42" parapet similar)
(Showing reinforcement clearances for slip forming and additional reinforcement bars)



42" F SHAPE PARAPET SECTION
(Showing dimensions)

*See Superstructure Details.

*Plan dimension + 1 1/2" (B)

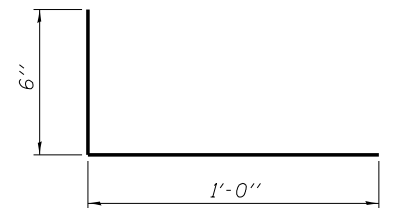


GFRP REBAR STIFFENING DETAIL

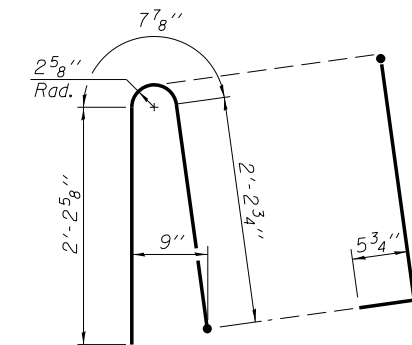
(Place as shown in parapet section at each parapet joint location.)

GENERAL NOTES

All dimensions shall remain the same as shown on superstructure details, except dimensions A and B which are to be revised as shown to provide additional clearance. Additional concrete needed to revise dimension A and B = 0.0165 cu. yds./ft. for 34" parapet.
Place aluminum sheet in curb portion at and near piers. Full thickness saw cut at all joint locations in lieu of cork joint filler.
Steel superstructure shown. Other superstructure types similar.

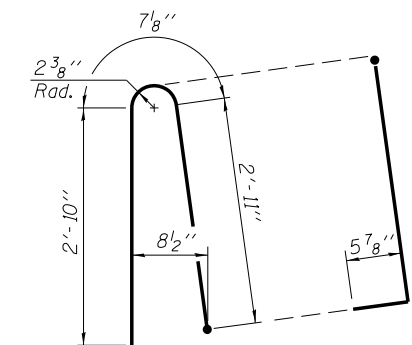


#3 (E) BAR



ALTERNATE BAR d(E)

(For 34" parapet when conduit is present)



ALTERNATE BAR d(E)

(For 42" parapet when conduit is present)



Alfred Benesch & Company
205 North Michigan Avenue, Suite 2400
Chicago, Illinois 60601
312-565-0450 Job No. 10093

SFP 34-42

8-16-12

FILE NAME =	USER NAME = ksnyder	DESIGNED - DMS	REVISED -
0161510.60W77.016.Parapet.Slipforming.dgn		CHECKED - KWS	REVISED -
	PLOT SCALE =	DRAWN - KMS	REVISED -
	PLOT DATE = 6/23/2014	CHECKED - KWS	REVISED -

**STATE OF ILLINOIS
DEPARTMENT OF TRANSPORTATION**

**CONCRETE PARAPET SLIPFORMING OPTION
STRUCTURE NO. 016-1510**

SHEET NO. SA16 OF SA43 SHEETS

F.A.P. RTE.	SECTION	COUNTY	TOTAL SHEETS	SHEET NO.
373	(0707-608&611)HB-B	COOK	177	81
				CONTRACT NO. 60W77
				ILLINOIS FED. AID PROJECT