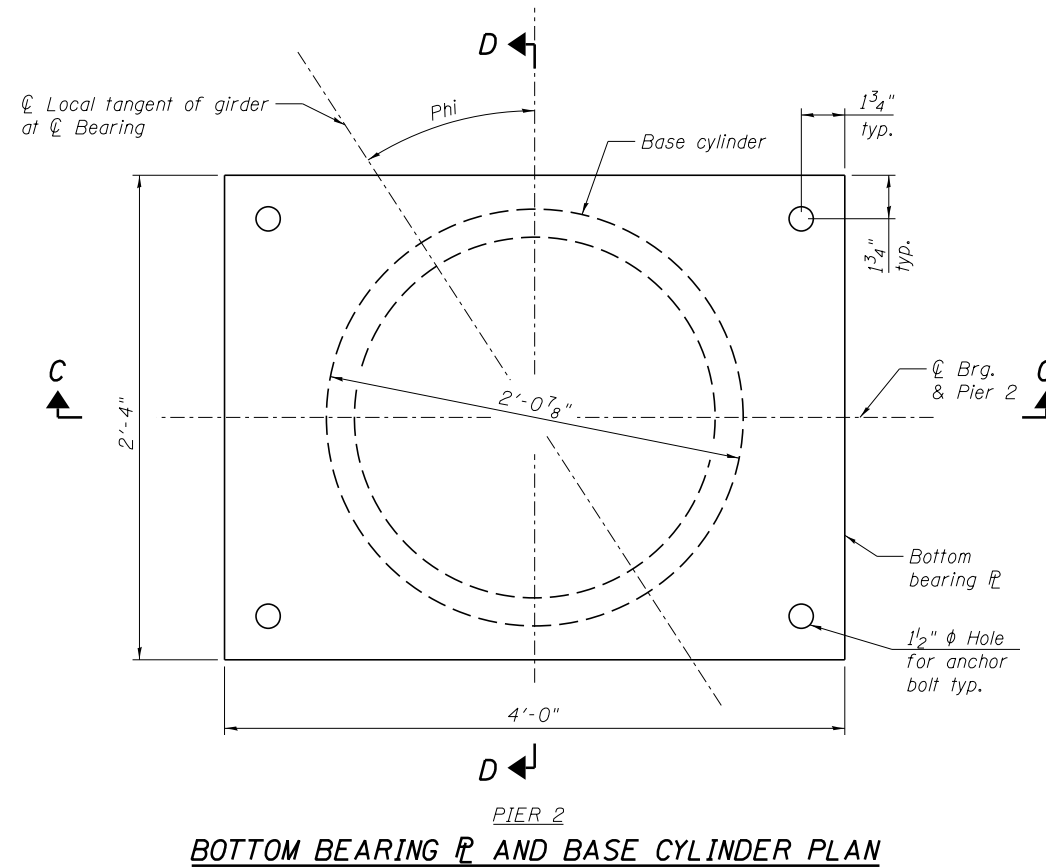
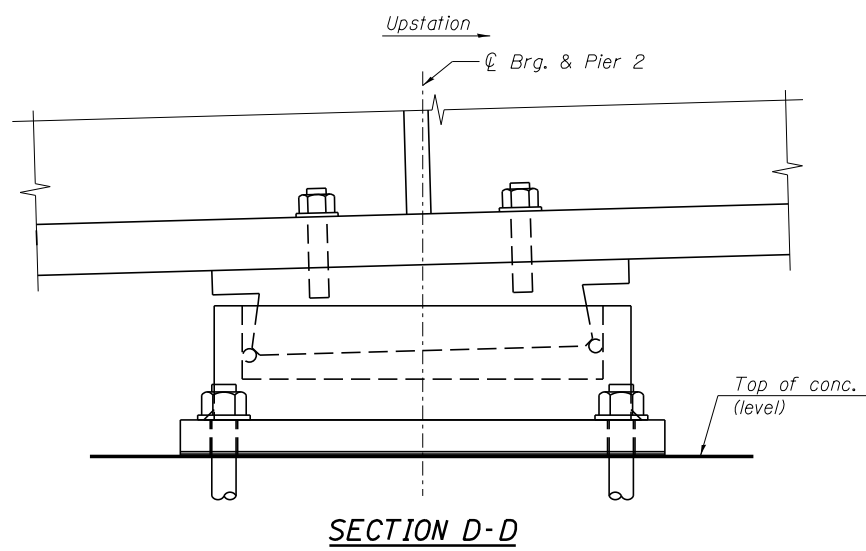
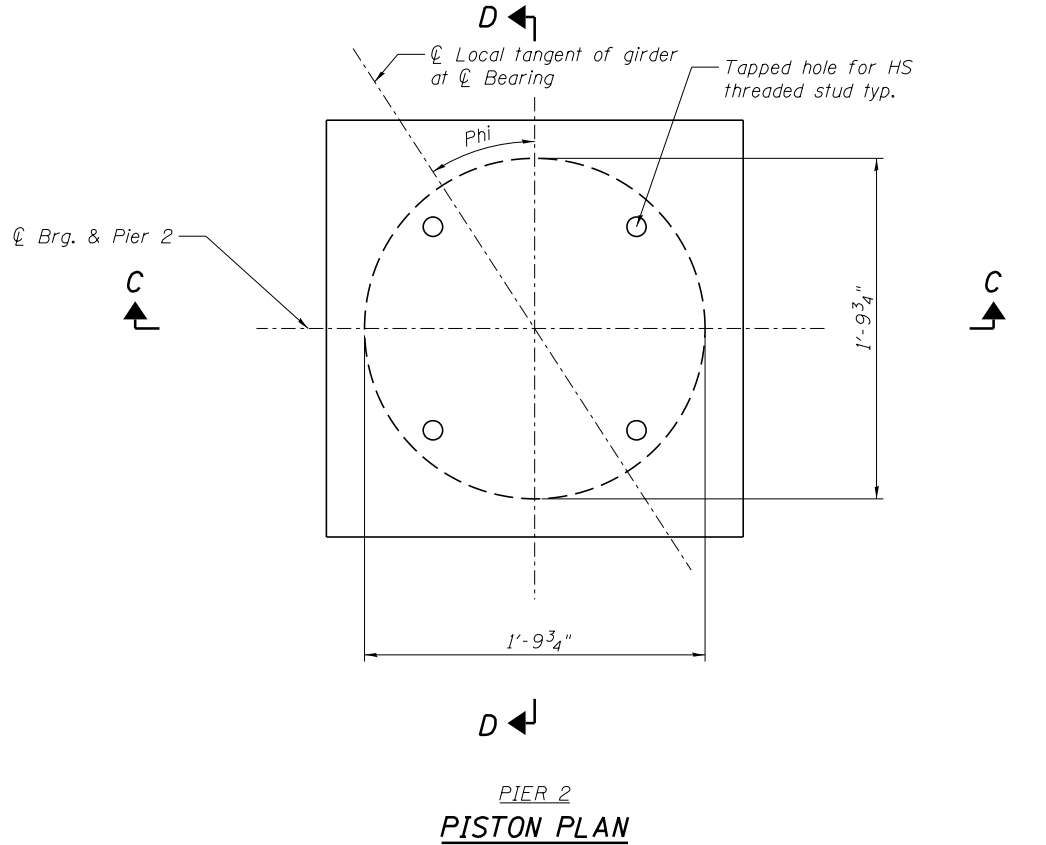


1"  $\phi$  x 12" Anchor bolt (ASTM F1554 Grade 36) with 2 1/4" x 2 1/4" x 5/16"  $\phi$  washer under nut typ.

1/8" Elastomeric neoprene leveling pad according to the material properties of Article 1052.02(a) of the Standard Specifications

**SKEW**

Location	Phi	
Pier 2	Girder 1	34°09'23"
	Girder 2	33°32'19"
	Girder 3	32°56'40"
	Girder 4	32°22'22"



**BEARING DIMENSIONS**

Location	Pay Item Designation (kips)	Vert. Design Load* (kips)	Hu* (kips)	$\theta u^{**}$ (radians)
Pier 2	500	408	82	0.008

**BILL OF MATERIAL**

ITEM	UNIT	TOTAL
High Load Multi-Rotational Bearings, Fixed - 500K	Ea.	4
Anchor Bolts, 1"	Ea.	16

**NOTE:**  
For notes, see sheet SB28.

**benesch**  
engineers · scientists · planners

Alfred Benesch & Company  
205 North Michigan Avenue, Suite 2400  
Chicago, Illinois 60601  
312-565-0450 Job No. 10093

\* Design Loads are the governing service loads with no dynamic allowance.  
\*\* Rotation allowances for fabrication tolerances (0.005 radians) and installation uncertainties (0.005 radians) are excluded.

**STATE OF ILLINOIS  
DEPARTMENT OF TRANSPORTATION**

**HLMR FIXED BEARING DETAILS  
STRUCTURE NO. 016-1512**

FILE NAME =	USER NAME = ksnyder	DESIGNED - DMS/JHG	REVISED -
0161512.60W77.027.Fixed.Bearing.Details.dwg	PLOT SCALE =	CHECKED - KWS	REVISED -
	PLOT DATE = 6/23/2014	DRAWN - DMS	REVISED -
		CHECKED - KWS	REVISED -

SHEET NO. SB27 OF SB43 SHEETS

F.A.P. RTE.	SECTION	COUNTY	TOTAL SHEETS	SHEET NO.
373	(0707-608&611)HB-B	COOK	177	143
CONTRACT NO. 60W77				
ILLINOIS FED. AID PROJECT				

X:\100000S\100093\Eng-Docs-Phase-11\SN-016-1512-SB-1st-Ave-to-NB-155-over-155\Final\0161512-60W77-027-Fixed.Bearing-Details.dwg 10:38:39 AM 6/23/2014