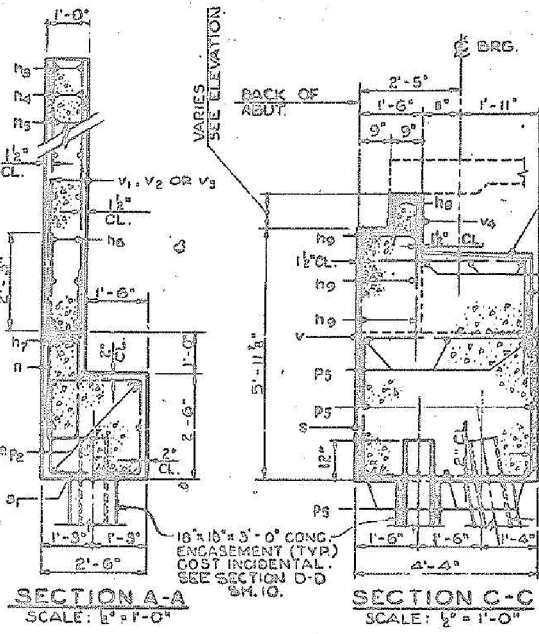


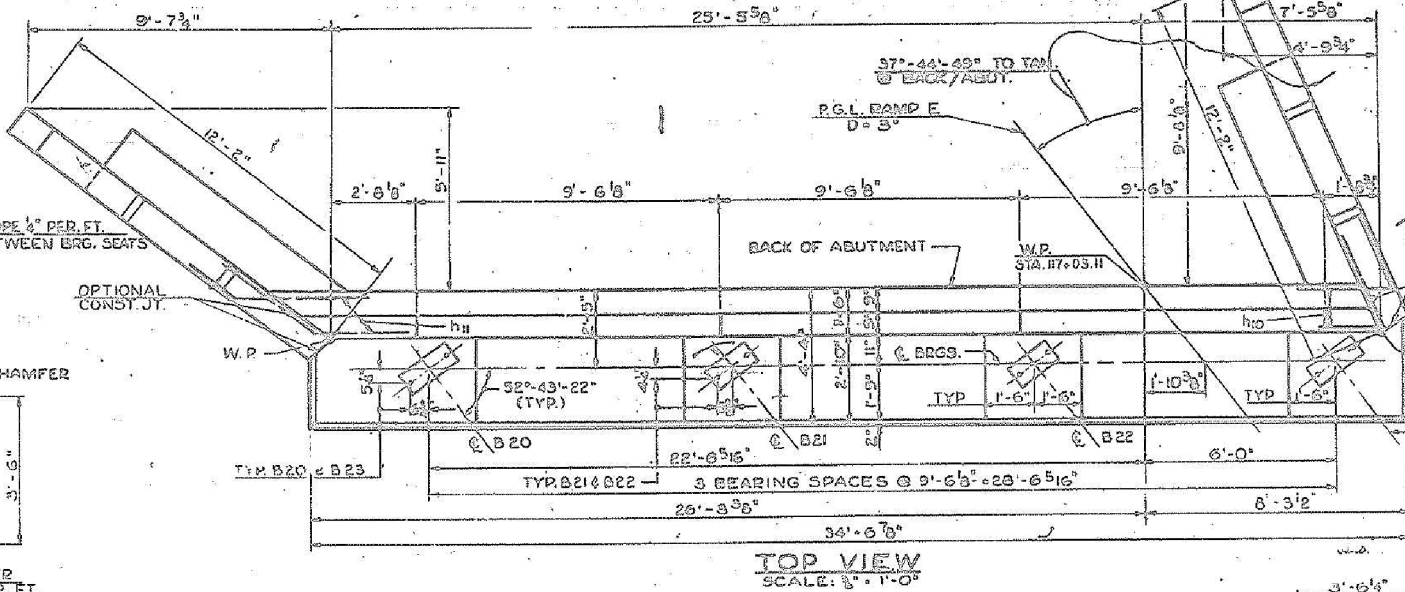
WING WALL ELEVATION
DIMENSIONS
SCALE: 3/8" = 1'-0"

ELEVATION
SCALE: 3/8" = 1'-0"

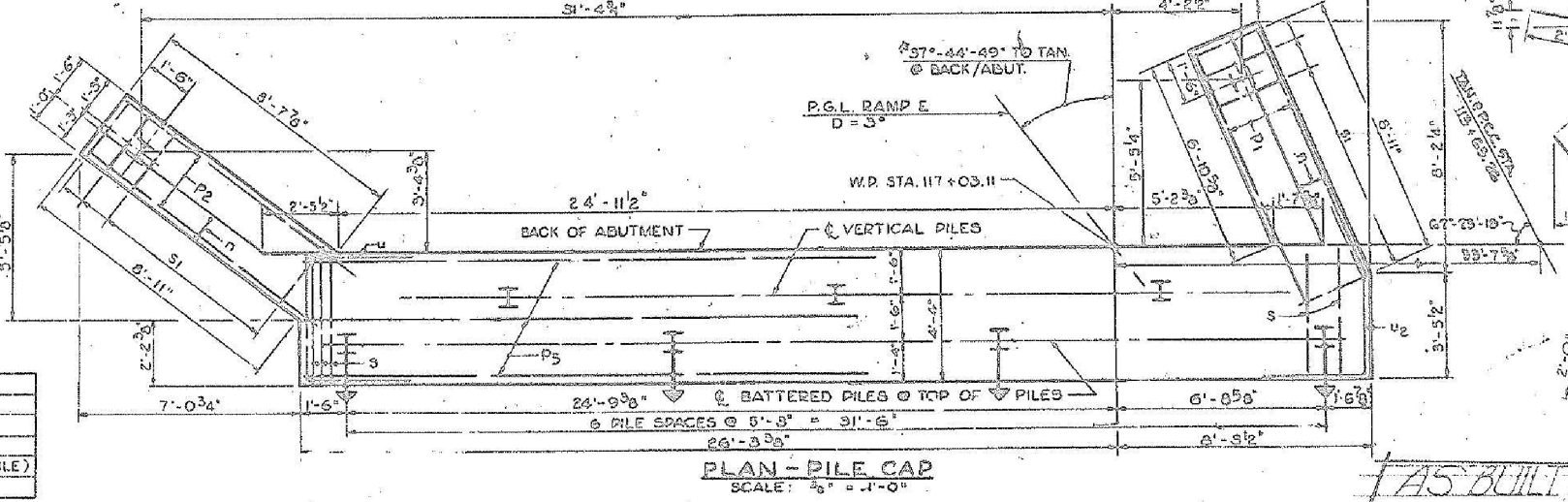


SECTION A-A
SCALE: 1/2" = 1'-0"

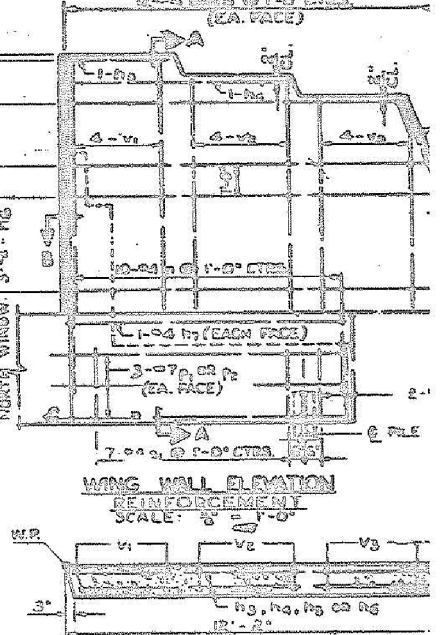
SECTION C-C
SCALE: 1/2" = 1'-0"



TOP VIEW
SCALE: 3/8" = 1'-0"



PLAN - PILE CAP
SCALE: 3/8" = 1'-0"



SECTION B-B
SCALE: 3/8" = 1'-0"

ABUTMENT BILL OF MATERIALS

BAR	NO.	SIZE	LEN.
h ₁	6	#4	16'
h ₂	4	#4	16'
h ₃	12	#4	16'
h ₄	14	#4	16'
h ₅	4	#4	16'
h ₆	4	#4	16'
h ₇	6	#5	16'
h ₈	6	#5	16'
h ₉	2	#5	16'
h ₁₀	20	#4	16'
h ₁₁	9	#7	16'
h ₁₂	6	#7	16'
h ₁₃	6	#7	16'
h ₁₄	6	#7	16'
h ₁₅	34	#4	16'
h ₁₆	15	#4	16'
h ₁₇	23	#4	16'
h ₁₈	4	#5	16'
h ₁₉	4	#5	16'
h ₂₀	2	#5	16'
h ₂₁	33	#4	16'
h ₂₂	10	#4	16'
h ₂₃	10	#4	16'
h ₂₄	10	#4	16'
h ₂₅	10	#4	16'
h ₂₆	10	#4	16'
h ₂₇	10	#4	16'
h ₂₈	10	#4	16'
h ₂₉	10	#4	16'
h ₃₀	10	#4	16'
h ₃₁	10	#4	16'
h ₃₂	10	#4	16'
h ₃₃	10	#4	16'
h ₃₄	10	#4	16'
h ₃₅	10	#4	16'
h ₃₆	10	#4	16'
h ₃₇	10	#4	16'
h ₃₈	10	#4	16'
h ₃₉	10	#4	16'
h ₄₀	10	#4	16'
h ₄₁	10	#4	16'
h ₄₂	10	#4	16'
h ₄₃	10	#4	16'
h ₄₄	10	#4	16'
h ₄₅	10	#4	16'
h ₄₆	10	#4	16'
h ₄₇	10	#4	16'
h ₄₈	10	#4	16'
h ₄₉	10	#4	16'
h ₅₀	10	#4	16'

CLASS R CONCRETE
PROTECTIVE COAT
REINFORCEMENT BARS
FURNISHING STEEL PILES
TEST PILES STEEL
DRIVING STEEL PILES
CLASS A EXCAV FOR STRUCT'S

NOTES:
ALL ANCHOR BOLTS TO PROJECT 3" ABOVE FINISHED CONCRETE. ALL BAR DIMENSIONS ARE OUT TO OUT.
PREFIX ALL BAR MARKS FOR SHIPMENT WITH LETTER E. EXAMPLE: E h₁ MEANS BARS h₁ FOR EAST ABUTMENT.
FOR WORK POINTS, SEE LOCATION PLAN SH. 13.
FOR SLEEVES IN BACKWALL, SEE SH. 20.

PILE DATA

TYPE	CAPACITY	EST. LENGTH	NO. REQ'D	CUTOFF ELEV.
6BP36	25 TON	59 FEET	9 (INCL. TEST PILE)	615.95

DE LEW, CATHEN & CO. ENGINEERS
DESIGNED BY V.A. ANDRZEJCZAK
DRAWN BY J. ALLEN
CHECKED BY J. ALLEN
IN CHARGE E.A. MARTINEZ
APPROVED L. J. BISH



Alfred Benesch & Company
205 North Michigan Avenue, Suite 2400
Chicago, Illinois 60601
312-565-0450 Job No. 10093

FILE NAME = 0161512.60W77.047.Existing Plans.4.dgn
PLOT SCALE =
PLOT DATE = 6/23/2014

USER NAME	DESIGNED	REVISIONS
knsinder	DMS	
JHG	JHG	
KMS	KMS	
JHG	JHG	

STATE OF ILLINOIS
DEPARTMENT OF TRANSPORTATION

EXISTING PLANS (4 OF 7)
STRUCTURE NO. 016-1512
SHEET NO. SBX4 OF SBX7 SHEETS

FOR INFORMATION ONLY

F.A.P. RTE.	SECTION	COUNTY	TOTAL SHEETS	SHEET NO.
373	(0707-608&611)HB-B	COOK	177	163
				CONTRACT NO. 60W77
ILLINOIS FED. AID PROJECT				

X:\100000\10093\Eng-Docs\Phase_1\15N-016-1512-SB_1st_Ave-to-NB-155-over_155\Final\0161512-60W77-047-Existing Plans-4.dgn 10:42:31 AM 6/23/2014