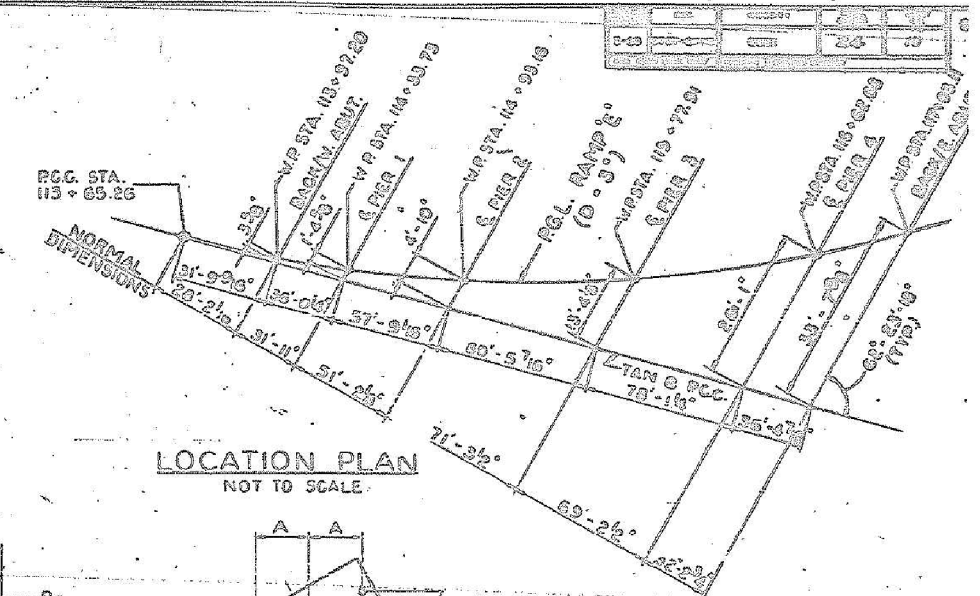
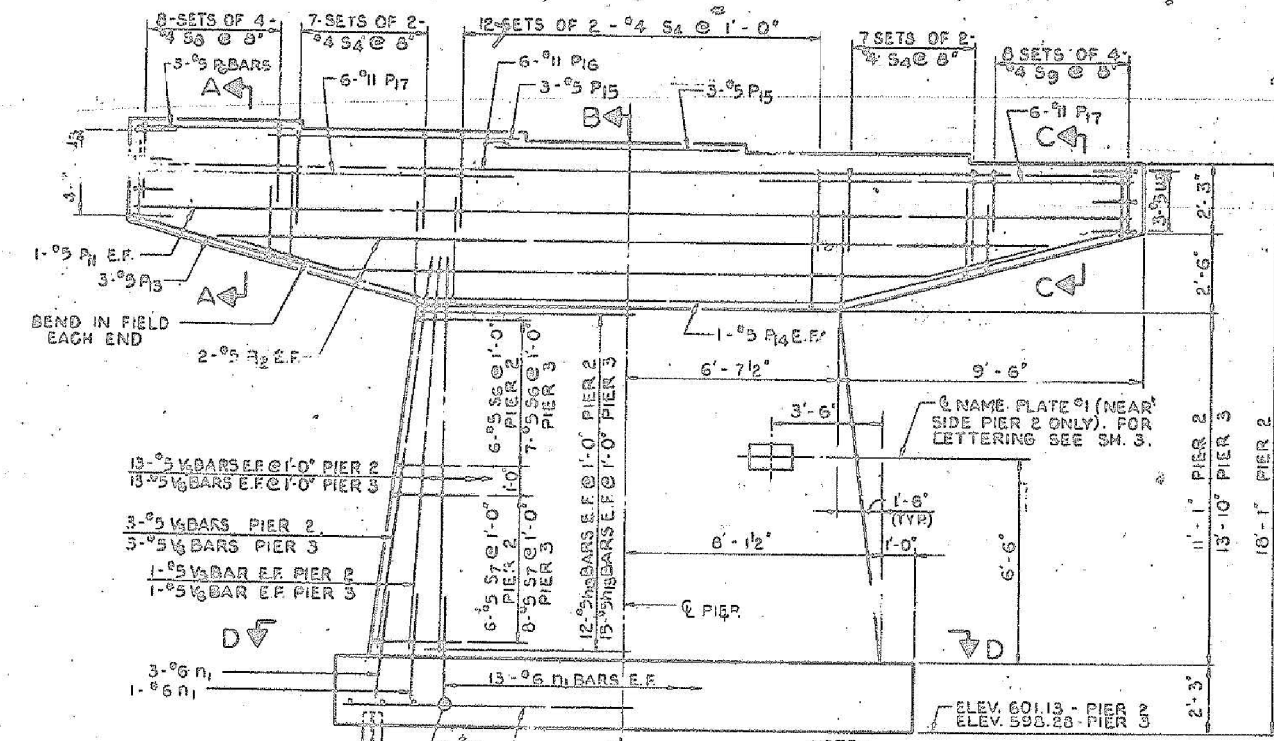


CAP PLAN PIERS 2 & 3
SCALE: 3/8" = 1'-0"

NOTE:
FOR EMBEDDED ELECTRICAL WORK SEE SH. 20.

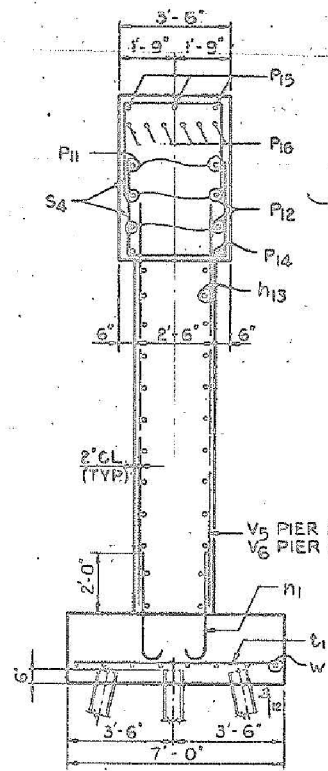


LOCATION PLAN
NOT TO SCALE.

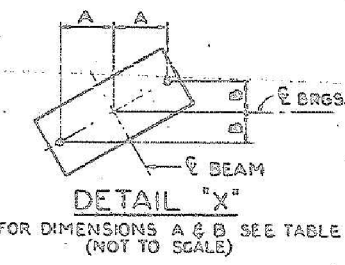


ELEVATION
SCALE: 3/8" = 1'-0"

NOTE:
STEM & FOOTING REINFORCEMENT AND DIMENSIONS SYMMETRICAL ABOUT & PIER.



SECTION B-B
SCALE: 3/8" = 1'-0"



DETAIL 'X'
FOR DIMENSIONS A & B SEE TABLE (NOT TO SCALE)

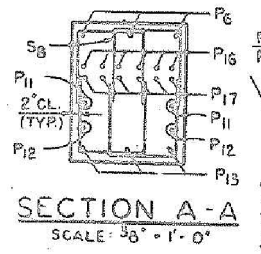
LOCATION	BEAM	A	B
PIER 2	B5 THRU B9	7'12"	4'7 1/2"
	B10 THRU B14	7'5 1/2"	4'5 1/2"
PIER 3	B10 THRU B14	7'12"	4'5 1/2"
	B15 THRU B19	6'5 1/2"	4'5 1/2"

NOTE:
ALL ANCHOR BOLTS TO PROJECT 3" ABOVE FINISHED CONCRETE. SPACE REINFORCEMENT IN CAP TO MISS ANCHOR BOLTS.
ALL EDGES TO HAVE STD. 3/4" CHAMFER, EXCEPT AS NOTED.
FOUR STEPS MONOLITHICALLY WITH PIER CAP.

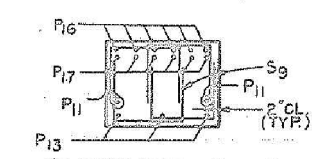
BAR	NUMBER			SIZE	LENG
	PIER 2	PIER 3	TOTAL		
n1	56	56	72	6	4'-3"
n2	3	3	6	3	5'-0"
n3	2	2	4	9	31'-0"
n4	4	4	8	9	27'-0"
n5	6	6	12	5	10'-0"
n6	2	2	4	5	19'-0"
n7	8	8	12	5	8'-0"
n8	6	6	12	11	31'-0"
n9	12	12	24	11	12'-0"

BAR	C	D
S4	3'-1"	3'-2"
S6	2'-0"	2'-2"
S7	2'-9"	2'-2"
S8	2'-7"	2'-0"
S9	2'-1"	2'-0"
U3	1'-5"	3'-1"

NOTE: ALL BAR DIMENSIONS ARE OUT-TO-OUT. PREFIX ALL BAR MARKS FOR PIER WITH A NUMBER INDICATING THE PIER THE BARS WILL BE USED. EXAMPLE: P2 n1 MEANS BARS n1 TO BE USED FOR PIER 2.



SECTION A-A
SCALE: 3/8" = 1'-0"



SECTION C-C
SCALE: 3/8" = 1'-0"

PILE DATA		
LOCATION	PIER 2	PIER 3
PILE TYPE	8BP36	8BP36
MIN. CAPACITY, TONS	30	30
NO. REQUIRED	14*	14*
EST. LENGTH, FEET	27	21
CUT OFF ELEV.	601.63	598.78

*INCLUDES TEST PILE.

BILL OF MATERIAL (2 PIERS)			
ITEM	UNIT	QUANTITY	
		PIER 2	PIER 3
CLASS X CONCRETE	CU YD	44.4	48.4
REINFORCEMENT BARS	POUND	4470	4710
FURNISHING STEEL PILES 8BP36	LIN FT	351	273
TEST PILE 8BP36	EACH	1	1
DRIVING STEEL PILES	LIN FT	351	273
NAME PLATE	EACH	1	1
CLASS A EXCAVATION FOR STRUCTURES	CU YD	26	39

ILLINOIS DIVISION OF HIGHWAYS
SOUTHWEST EXPRESS
RAMP 'E' OVER SOUTHWEST EXPRESS PIERS 2 AND 3

DE LEW, CATHOR & CO. ENGINEERS
DESIGNED BY J. BROZ
DRAWN BY M. MADRERY
CHECKED BY E. S. MARTINEZ
IN CHARGE L. B. SIEM
APPROVED

STA. 114+93.16 - PIER 2
STA. 115+77.91 - PIER 3
TAN. @ R.C.C.
STA. 113+65.26

SECTION D-D
SCALE: 3/8" = 1'-0"

STATE OF ILLINOIS
DEPARTMENT OF TRANSPORTATION

EXISTING PLANS (5 OF 7)
STRUCTURE NO. 016-1512
SHEET NO. SBX5 OF SBX7 SHEETS

FOR INFORMATION ONLY

F.A.P. RTE.	SECTION	COUNTY	TOTAL SHEETS	SHEET NO.
373	(0707-608&611)HB-B	COOK	177	164
				CONTRACT NO. 60W77
ILLINOIS FED. AID PROJECT				



Alfred Benesch & Company
205 North Michigan Avenue, Suite 2400
Chicago, Illinois 60601
312-565-0450 Job No. 10093

FILE NAME	USER NAME	DESIGNED	REVISIONS
0161512.60W77.048.Existing Plans.5.dgn	ksnyder	DMS	
		JHG	
		KMS	
		JHG	