

STATE OF ILLINOIS
 DEPARTMENT OF TRANSPORTATION
 DIVISION OF HIGHWAYS

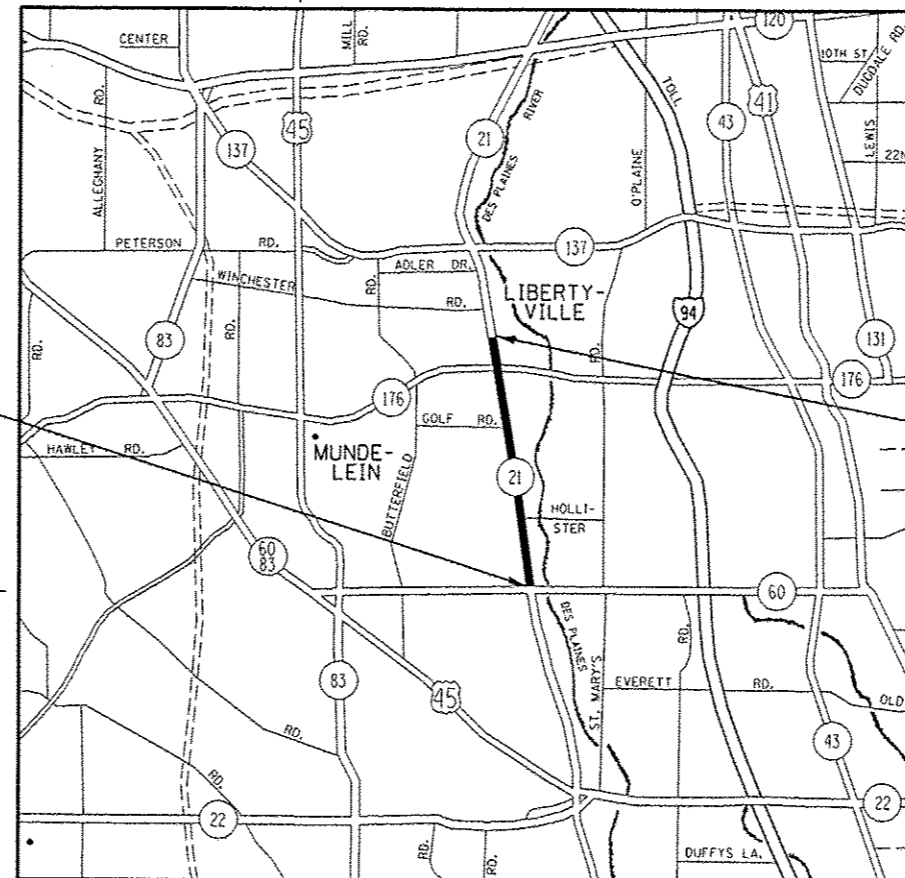
**PROPOSED
 HIGHWAY PLANS**

F.A.P. ROUTE 330: IL 21 (MILWAUKEE AVE.)
 CHURCH ST. TO IL 60 (TOWNLINE RD.)
 SECTION: (2&2A)RS-10
 RESURFACING, NEW MEDIAN

LAKE COUNTY

C-91-043-14

R. 10 E. R. 11 E.



PROJECT BEGINS
 STA. 17 + 00

PROJECT ENDS
 STA. 186 + 18.4

T. 43 N. T. 44 N.

LIBERTYVILLE TOWNSHIP

GROSS & NET LENGTH = 16918.4 FT. = 3.204 MILES

F.A.P. RTE.	SECTION	COUNTY	TOTAL SHEETS	SHEET NO.
330	(2&2A)RS-10	LAKE	42	1
		ILLINOIS	CONTRACT NO. 60X23	

D-91-043-14



LOCATION OF SECTION INDICATED THUS: -

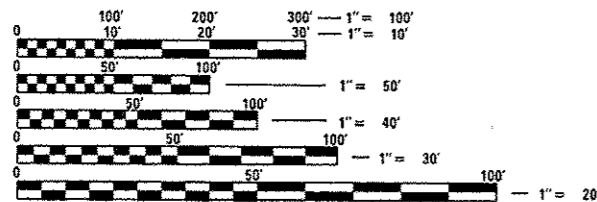
FOR INDEX OF SHEETS, SEE SHEET NO. 2

THE IMPROVEMENT IS LOCATED IN THE
 VILLAGES OF LIBERTYVILLE AND VERNON HILLS

TRAFFIC DATA

ADT (2013) = 28,700

POSTED SPEED LIMIT = 25-40 MPH



FULL SIZE PLANS HAVE BEEN PREPARED USING STANDARD ENGINEERING SCALES. REDUCED SIZED PLANS WILL NOT CONFORM TO STANDARD SCALES. IN MAKING MEASUREMENTS ON REDUCED PLANS, THE ABOVE SCALES MAY BE USED.

J.U.L.I.E.
 JOINT UTILITY LOCATION INFORMATION FOR EXCAVATION
 1-800-892-0123
 OR 811

PROJECT ENGINEER J. ALAIN MIDY (847) 221-3056
 PROJECT MANAGER ISSAM RAYYAN (847) 705-4178

CONTRACT NO. 60X23

STATE OF ILLINOIS
 DEPARTMENT OF TRANSPORTATION
 DIVISION OF HIGHWAYS

SUBMITTED July 10 2014
John Furman
 DEPUTY DIRECTOR OF HIGHWAYS, REGION ENGINEER

Aug 15 2014
John D. Baranzoli PE, Jr.
 acting ENGINEER OF DESIGN AND ENVIRONMENT

Aug 15 2014
Omer Osman PE, Jr.
 DIRECTOR OF HIGHWAYS, CHIEF ENGINEER

PRINTED BY THE AUTHORITY
 OF THE STATE OF ILLINOIS