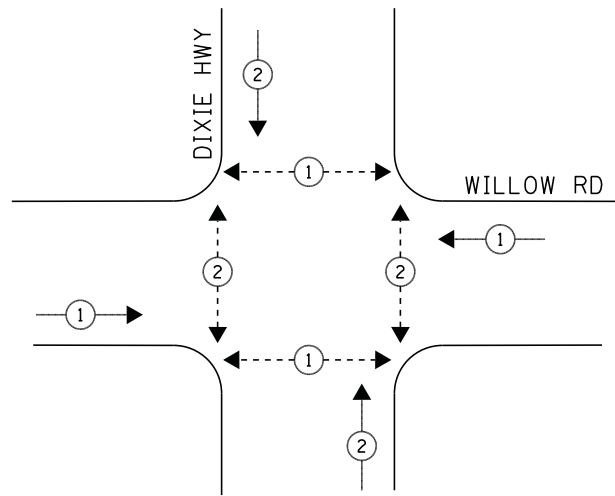
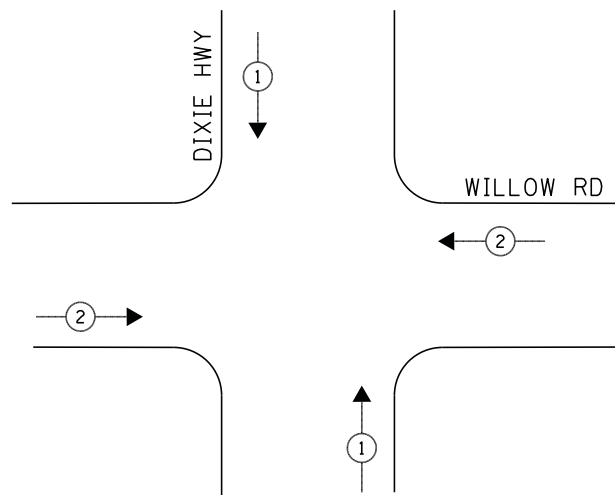


CONTROLLER SEQUENCE



PHASE DESIGNATION DIAGRAM

EMERGENCY VEHICLE PREEMPTION SEQUENCE



LEGEND

- ◀ * → DUAL ENTRY PHASE
- ◀ * → SINGLE ENTRY PHASE
- ◊ O.L. OVERLAP
- ◀ * → PEDESTRIAN PHASE
- * NUMBER REFERS TO ASSOCIATED PHASE

NOTE:

RELOCATE EVP PHASING UNIT TO THE NEW CONTROLLER CABINET. THE COST OF THIS WORK SHALL BE INCLUDED IN THE COST OF REPLACING THE CONTROLLER / CABINET.

EMERGENCY VEHICLE PREEMPTORS		
EMERGENCY VEHICLE PREEMPTOR	1	2
MOVEMENT	↑↓	←→

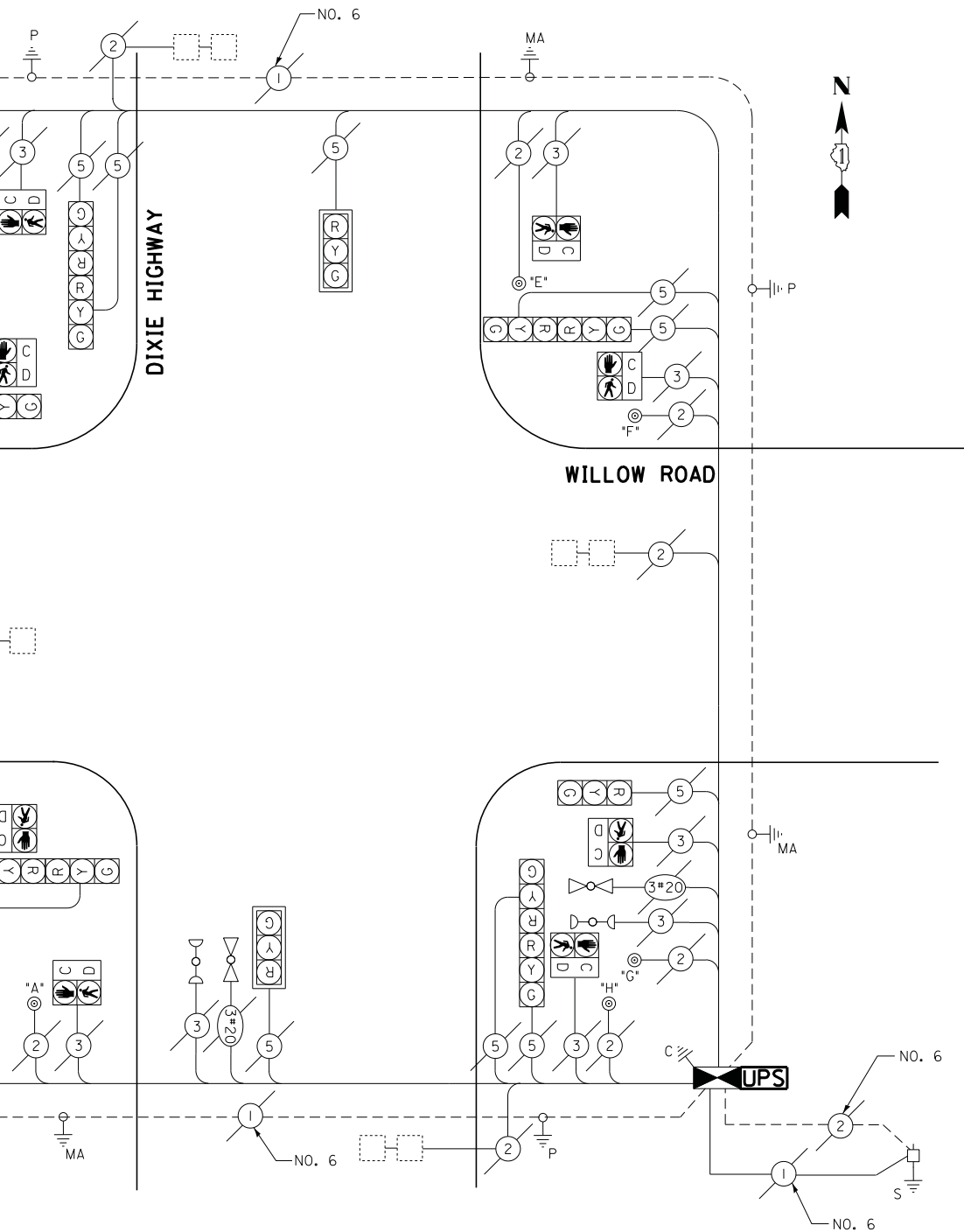
SCHEDULE OF QUANTITIES

QUANTITY	UNIT	ITEM
1	EACH	MAINTENANCE OF EXISTING TRAFFIC SIGNAL INSTALLATION
1	EACH	FULL-ACTUATED CONTROLLER AND TYPE IV CABINET
4	EACH	INDUCTIVE LOOP DETECTOR
1	EACH	REMOVE EXISTING TRAFFIC SIGNAL EQUIPMENT
1	EACH	UNINTERRUPTABLE POWER SUPPLY, SPECIAL

I.D.O.T. TRAFFIC SIGNAL INSTALLATION ELECTRICAL SERVICE REQUIREMENTS					TOTAL WATTAGE
TYPE	NO LAMPS	WATTAGE		%OPERATION	
		INCAND.	LED		
SIGNAL (RED)	12		17	0.5	102
(YELLOW)	12		25	0.25	75
(GREEN)	12		15	0.25	45
ARROW	-		12	0.10	-
PED. SIGNAL	8		25	1.00	200
CONTROLLER	1		100	1.00	100
ILLUM. SIGN			25	0.05	-
VIDEO SYSTEM			-	1.00	-
FLASHER				-	-
ENERGY COSTS TO:					TOTAL = 522
ILLINOIS DEPARTMENT OF TRANSPORTATION 201 WEST CENTER COURT SCHAUMBURG, ILLINOIS 60196-1096 ENERGY SUPPLY CONTACT: ILYAS MOHIUDDIN PHONE: (708) 235-2692 COMPANY: COMMONWEALTH EDISON					

FILE NAME = J:\13155\60Y42\DCN\CADD Sheets\0160Y42.dgn	USER NAME = _USER_	DESIGNED - V.O.	REVISED -
		DRAWN - E.C.	REVISED -
		CHECKED - I.Y.	REVISED -
		DATE - 7/11/2014	REVISED -

**STATE OF ILLINOIS
DEPARTMENT OF TRANSPORTATION**



CABLE PLAN

REMOVAL OF EXISTING TRAFFIC SIGNAL EQUIPMENT

THE FOLLOWING ITEMS SHALL BE REMOVED BY THE CONTRACTOR AND SHALL BE DISPOSED OF BY THEM OUTSIDE THE RIGHT-OF-WAY AT THEIR EXPENSE. THE SALVAGE VALUE OF THE REMOVED EQUIPMENT SHALL BE REFLECTED IN THE CONTRACT BID PRICE.

- 4 EACH INDUCTIVE LOOP DETECTOR
- 1 EACH CONTROLLER AND CABINET

**TS# 10745
HOMWOOD**

SCHEDULE OF QUANTITIES, CABLE PLAN, PHASE DESIGNATION DIAGRAM, AND EMERGENCY VEHICLE PREEMPTION SEQUENCE DIXIE HIGHWAY AT WILLOW ROAD				F.A.P. RTE.	SECTION	COUNTY	TOTAL SHEETS	SHEET NO.
					2014-044TS	COOK	65	28
				CONTRACT NO. 60Y42				
				ILLINOIS FED. AID PROJECT				