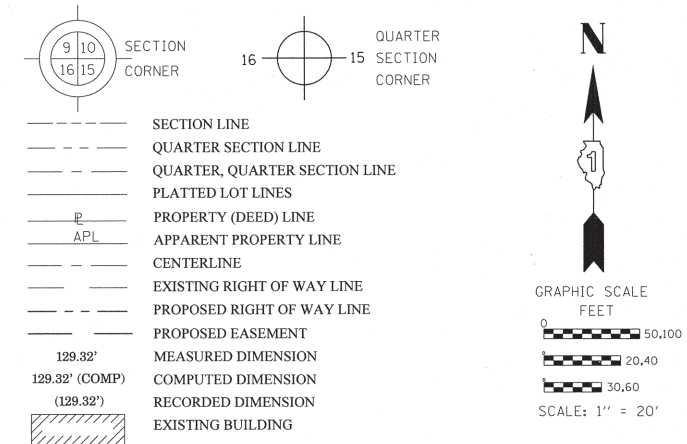


PART OF THE NW 1/4 AND NE 1/4 OF SECTION 22, TWP. 41 N., R.8 E. OF THE 3RD. P.M., IN KANE COUNTY, ILLINOIS.

PARCEL NUMBER	OWNER	TOTAL HOLDINGS ACRES	PART TAKEN ACRES	AREA IN EXISTING R.O.W. ACRES	REMAINDER AREA ACRES	EASEMENT ACRES	AREA SQUARE FEET	EASEMENT PURPOSE	PERMANENT INDEX NUMBER	PROPERTY ACQUIRED BY
1H60015	KEITH F. FLANINGAM	0.177	0.177	N/A	0.000	N/A	N/A	N/A	06-22-251-030	
1H60016	MIGUEL MADERO AND ROSI MADERO	0.353	0.353	N/A	0.000	N/A	N/A	N/A	06-22-251-029	
1H60017	TUNG B. TRAN AND THAI QUANG CHIEM	0.336	0.336	N/A	0.000	N/A	N/A	N/A	06-22-251-028	
1H60029	FOX ENTREPRENEUR, INC.	0.407	0.072	N/A	0.335	0.036	N/A	CONST	06-22-128-051	
1H60030	KIMCO DEVELOPMENT CORPORATION	0.390	0.105	N/A	0.285	0.056	N/A	CONST	06-22-128-063	

LEGEND



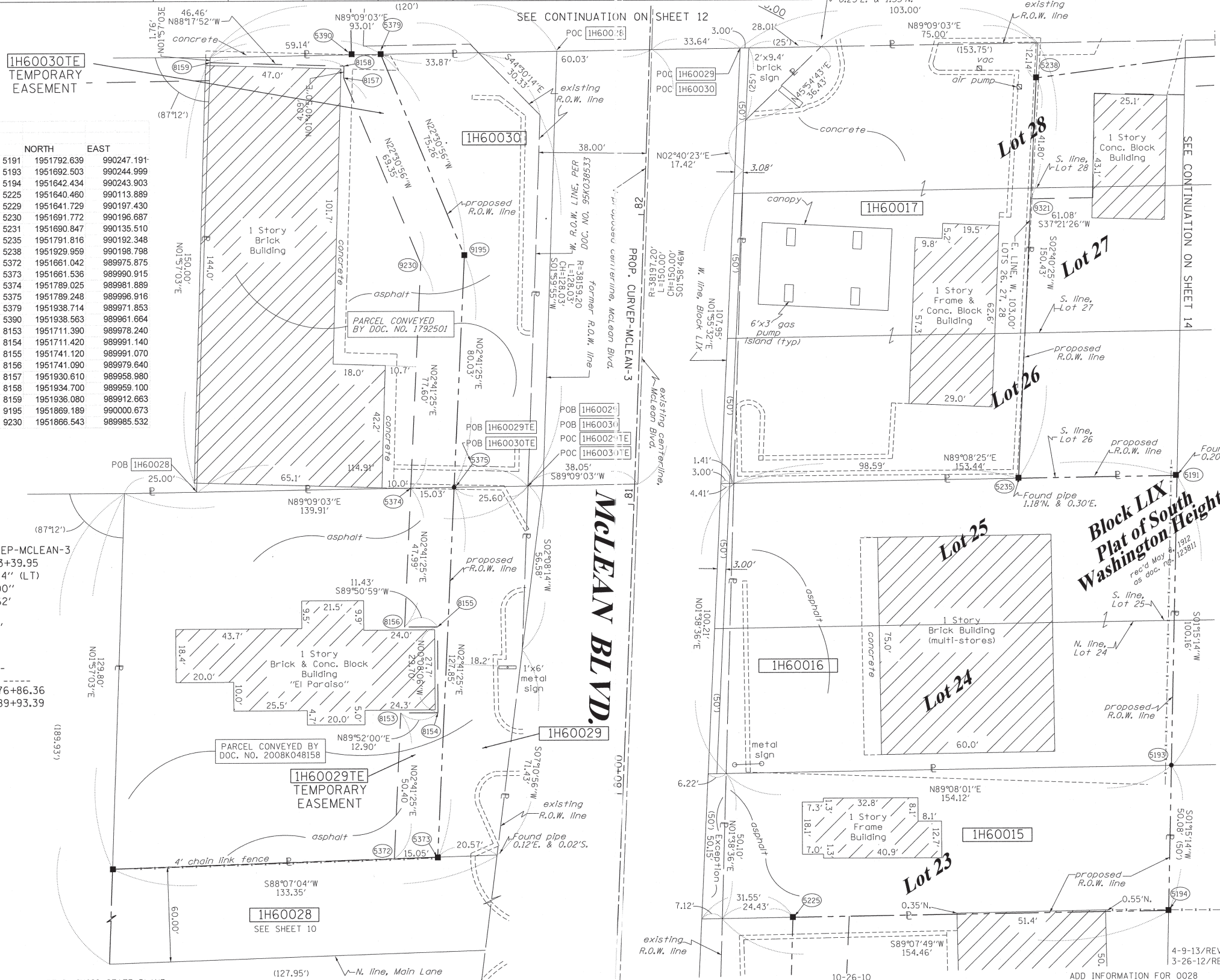
Bearings are referenced to the Illinois Coordinate System, NAD83, East Zone, as provided by the Illinois Department of Transportation.

COORDINATE TABLE

STATION	OFFSET	PT#	NORTH	EAST
81+16.71	187.50	5191	1951792.639	990247.191
80+17.11	189.33	5193	1951692.503	990244.999
79+67.31	190.35	5194	1951642.434	990243.903
79+59.76	60.54	5225	1951640.460	990113.889
79+64.62	143.95	5229	1951641.729	990197.430
80+14.38	141.09	5230	1951691.772	990196.687
80+10.91	80.00	5231	1951690.847	990135.510
81+13.77	132.73	5235	1951791.816	990192.348
82+51.53	134.09	5238	1951929.959	990198.798
79+74.39	-78.23	5372	1951661.042	989975.875
79+75.53	-63.23	5373	1951661.536	989990.915
81+02.80	-77.46	5374	1951789.025	989981.889
81+03.61	-62.46	5375	1951789.248	989996.916
82+52.39	-93.02	5379	1951938.714	989971.853
82+51.88	-103.20	5390	1951938.563	989961.664
80+24.90	-77.99	8153	1951711.390	989978.240
80+25.47	-65.10	8154	1951711.420	989991.140
80+55.20	-66.38	8155	1951741.120	989991.070
80+54.70	-77.80	8156	1951741.090	989979.640
82+43.81	-105.60	8157	1951930.610	989958.980
82+47.92	-105.63	8158	1951934.700	989959.100
82+47.68	-152.08	8159	1951936.080	989912.663
81+83.78	-61.73	9195	1951869.189	990000.673
81+80.57	-76.77	9230	1951866.543	989985.532

PROP. CURVEP-MCLEAN-3
 PI STA. =83+39.95
 $\Delta = 2^\circ 10' 44''$ (LT)
 $D = 0^\circ 10' 00''$
 $R = 34,370.62'$
 $T = 653.59'$
 $L = 1,307.03'$
 $E = 6.21'$
 $e = \text{---}$
 $T.R. = \text{---}$
 $S.E. RUN = \text{---}$
 $P.C. STA = 76+86.36$
 $P.T. STA = 89+93.39$

COORDINATES SHOWN HEREON ARE ILLINOIS STATE PLANE EAST ZONE NAD 83 (2007) GRID BASED ON NGS STATION 0120 WITH PUBLISHED COORDINATES OF NORTH 1930566.76, EAST 1004454.55.



RECEIVED
 APR 10 2013
 PLATS & LEGALS

ILLINOIS PROFESSIONAL LAND SURVEYOR NO. 2630
 LICENSE EXPIRATION DATE: 11-30-2014
 THIS PROFESSIONAL SERVICE CONFORMS TO THE CURRENT ILLINOIS MINIMUM STANDARDS FOR A BOUNDARY SURVEY.

RUETTIGER, TONELLI & ASSOCIATES, INC.
 Land Surveyors/Engineers/Planners/Landscape Architects/G.I.S. Consultants
 2174 ONEIDA STREET
 JOLIET, ILLINOIS 60435
 PH. (815) 744-6500 FAX (815) 744-0101

PLAT OF HIGHWAYS
 STATE OF ILLINOIS
 DEPARTMENT OF TRANSPORTATION
 FAP 345 (US 20)

SECTION: COUNTY: KANE
 PROJECT JOB NO.: R-91-017-01
 STATION 79+00 TO STATION 83+00
 SCALE: 1" = 20' SHEET 11 OF 41

BUREAU OF LAND ACQUISITION 201 WEST CENTER COURT SCHAUMBURG, ILLINOIS 60196		TOTAL SHEETS	SHEET NO.
		7	6

**Block LIX
 Plat of South
 Washington Heights**

REVISION DATE: 10-20-09

REVISION
 ADD INFORMATION FOR 0028
 REVISE 0017E
 REVISE PARCEL 16 TO TOTAL TAKE PER IDOT
 REVISE OWNER NAME 0029 PER NEW TITLE
 REVISED 0016, 0017 & 0030 TO TAKES FROM DED'S
 REVISED 0016 & 0030 TO DED'S
 MISCEL. REVISIONS PER IDOT

MADE BY TLW