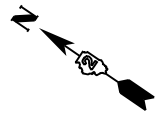


JOHN AND MARJORIE McCARTHY  
881 IL 35  
EAST DUBUQUE, IL

SCHOOL DISTRICT 119  
100 SCHOOL RD  
EAST DUBUQUE, IL



EXISTING 18" STORM SEWER

EXISTING 20' DRAINAGE EASEMENT  
TEMPORARY EASEMENT  
CONSTRUCTION LIMIT

PROPOSED  
RIP RAP AREA 20' x 27'

(A) STA. 0+00  
EXISTING MH  
RIM=785.44  
EX INV. E. = 776.70  
INV OUT = 776.70

(B) STA 0+40, 3.6'LT  
MH TYPE A,  
5' DIAMETER,  
TYPE 5 FRAME,  
CLOSED LID  
Rim Elev. 779.50  
Invert In=771.75  
Invert Out=770.50

(C) STA 0+80, 3.3'LT  
MH TYPE A,  
5' DIAMETER,  
TYPE 5 FRAME,  
CLOSED LID  
Rim Elev. 774.00  
Invert In=765.75  
Invert Out=765.50

STA 1+10, 3.1'LT  
MH TYPE A,  
5' DIAMETER,  
TYPE 5 FRAME,  
CLOSED LID  
Rim Elev. 769.00  
Invert In=761.00  
Invert Out=760.50

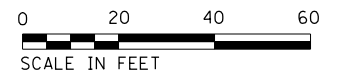
(E) STA 1+45, 2.9'LT  
MH TYPE A,  
5' DIAMETER,  
TYPE 5 FRAME,  
CLOSED LID  
Rim Elev. 763.00  
Invert In=755.25  
Invert Out=754.50

(F) STA 1+80, 2.7'LT  
MH TYPE A,  
5' DIAMETER,  
TYPE 5 FRAME,  
CLOSED LID  
Rim Elev. 757.50  
Invert In=749.75  
Invert Out=746.60

(G) STA 2+15, 2.5'LT  
MH TYPE A,  
5' DIAMETER,  
TYPE 5 FRAME,  
CLOSED LID  
Rim Elev. 749.00  
Invert In=741.25  
Invert Out=740.30

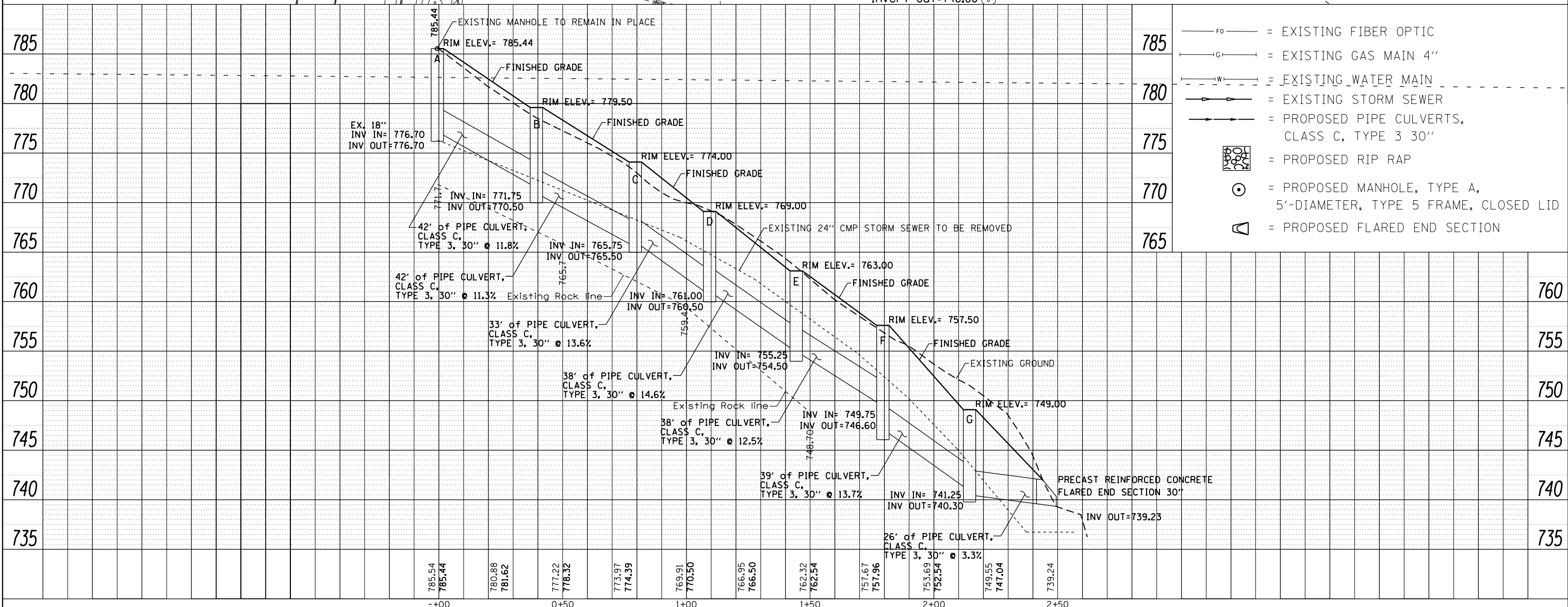
Church of St. Mary's  
170 Montgomery Ave.  
East Dubuque, IL 61025

NOTE: SEE REMOVAL SHEET  
FOR ALL REMOVALS  
AND CONSTRUCTION LIMIT  
STATION AND OFFSET



DATE	
BY	
PLAN	
NO.	
NO.	
NO.	
NO.	

DATE	
BY	
PROFILE	
NO.	
NO.	
NO.	
NO.	



FILE NAME =	USER NAME = dtzlerse	DESIGNED -	REVISED -	<b>STATE OF ILLINOIS DEPARTMENT OF TRANSPORTATION</b>	<b>PLAN AND PROFILE</b>	F.A.P. RTE.	SECTION	COUNTY	TOTAL SHEETS	SHEET NO.
c:\pwork\pwork\dtzlerse\d0398093\020414-sht-plnprf.dgn		DRAWN -	REVISED -			306	106M-4	JoDAVISS	17	8
Default		CHECKED -	REVISED -			CONTRACT NO. 64K21				
PLOT DATE = Fri May 30 08:41:34 2014		DATE -	REVISED -			ILLINOIS FED. AID PROJECT				