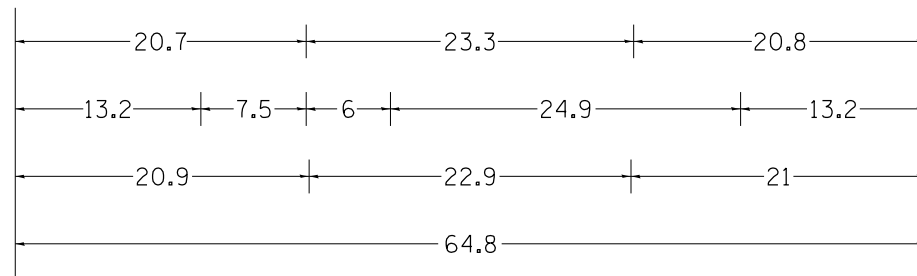
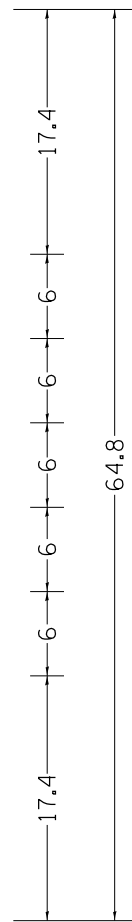


STAY IN YOUR LANE SIGN DETAILS



48.0" across sides 3.8" Radius, 1.0" Border, 0.6" Indent, Black on Orange
 "STAY" E Mod; "IN YOUR" E Mod; "LANE" E Mod;
 Table of letter and object lefts.

S	T	A	Y
20.7	26.8	31.6	38.0

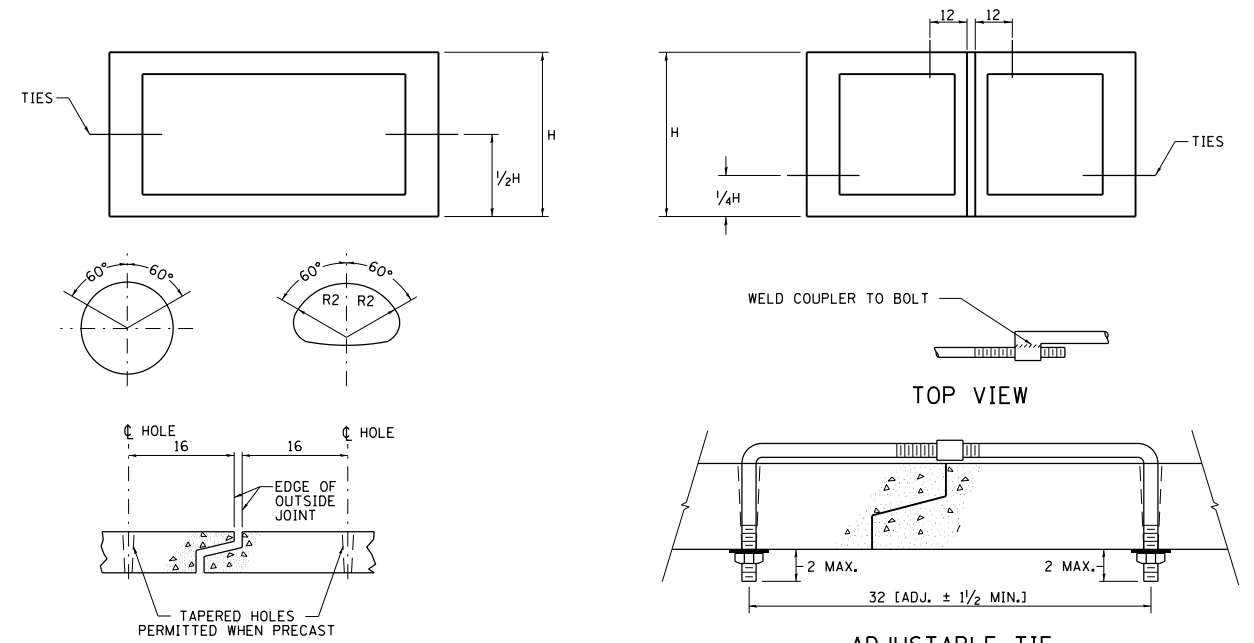
I	N	Y	O	U	R
13.2	15.9	26.7	33.9	40.5	46.8

L	A	N	E
20.9	25.8	33.1	39.4

REVISED - 4-04-11

MECHANICAL JOINTS FOR CONCRETE PIPE AND BOX CULVERTS

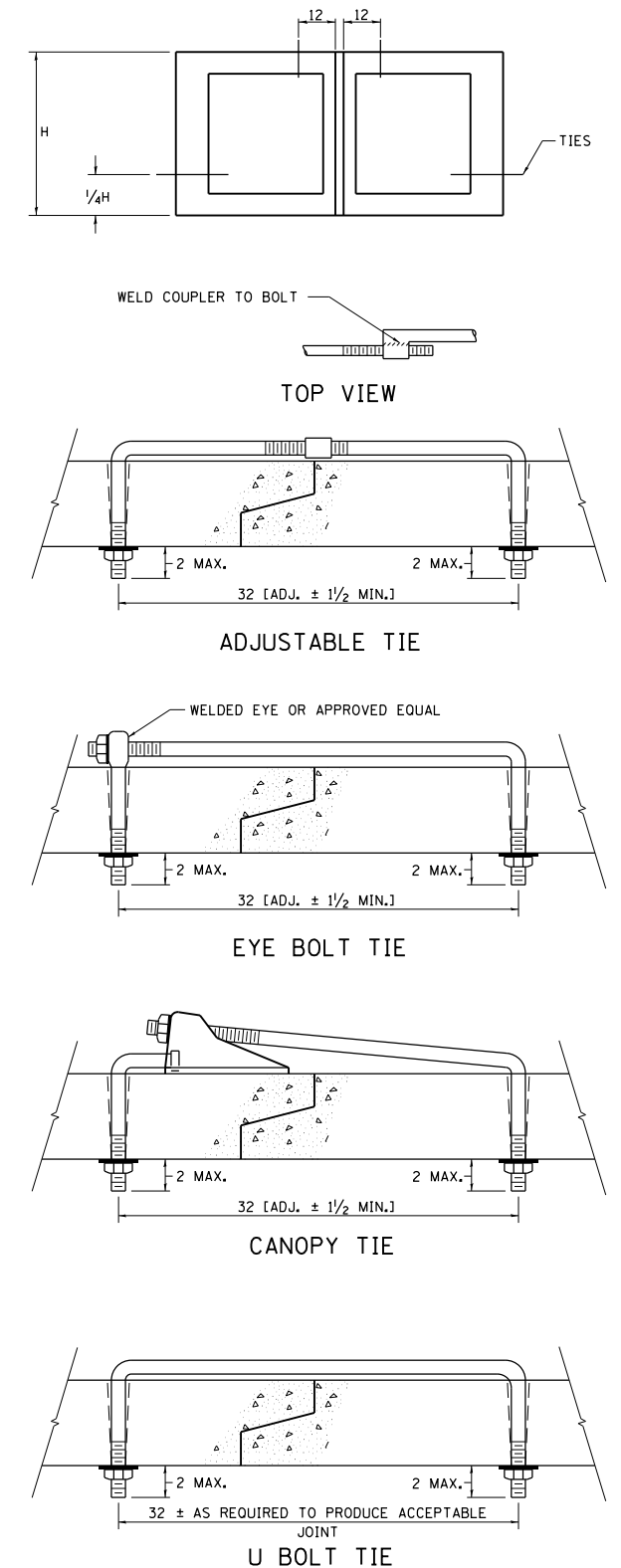
THE CULVERT TIES SHALL BE INCLUDED IN THE COST OF THE CONCRETE PIPE CULVERTS OR THE PRECAST CONCRETE BOX CULVERT. THE MECHANICAL TIES SHALL BE ON THE OUTSIDE OF THE CULVERT. THE NUTS AND WASHERS SHALL BE PLACED ON THE INSIDE OF OF THE CULVERT AND COVERED WITH MASTIC JOINT SEALER CONFORMING TO ARTICLES 1055 OR 1056 IN THE STANDARD SPECIFICATIONS FOR ROAD AND BRIDGE CONSTRUCTION.



PLACEMENT OF HOLES		
BOX CULVERT FEET	PIPE SIZE INCHES	THREAD DIAMETER
	12	3/8 ROLLED THREADS (SEE NOTE 4)
	15	
	18	
	21	
	24	
	27	1/2 CUT OR ROLLED
3x2	30	
3x3	33	
4x2	36	
4x3	42	
4x4	48	
5x3	54	
5x4	60	
5x5	66	
6x	72	
6x	78	1 CUT OR ROLLED
7x	84	
8x	90	
9x	96	
10x	102	
	108	
	120	
	132	
11 x	138	
AND GREATER	AND GREATER	

NOTES:

- HOLES SHALL BE CAST-IN OR DRILLED 16 FROM OUTSIDE EDGE OF JOINT.
- NUTS AND WASHERS ARE NOT REQUIRED ON INSIDE OF 27 DIAM. PIPE OR LESS.
- TIES ARE NOT REQUIRED FOR BELL PIPE 24 AND SMALLER. ON OTHER SIZES TIE MAY BE INSERTED FROM INSIDE.
- CUT THREADS MAY BE USED IF WASHER AND NUT ARE USED.
- PIPE SIZE LISTED IS INSIDE DIAM. OF ROUND PIPE OR EQUIVALENT DIAM. OF PIPE ARCH OR ELLIPTICAL.
- GALVANIZING OF TIES IS REQUIRED.
- ALL DIMENSIONS ARE IN INCHES UNLESS OTHERWISE NOTED.



REVISED - 10-14-11
REVISED -
REVISED -
REVISED -

REGION 2 / DISTRICT 2 STANDARD

SCALE: 40,0000' / 1" SHEET NO. OF SHEETS STA. TO STA.

F.A.P. RTE.	SECTION	COUNTY	TOTAL SHEETS	SHEET NO.
306	106M-4	JoDAVIESS	17	11
CONTRACT NO.			64K21	

FED. ROAD DIST. NO. ILLINOIS FED. AID PROJECT