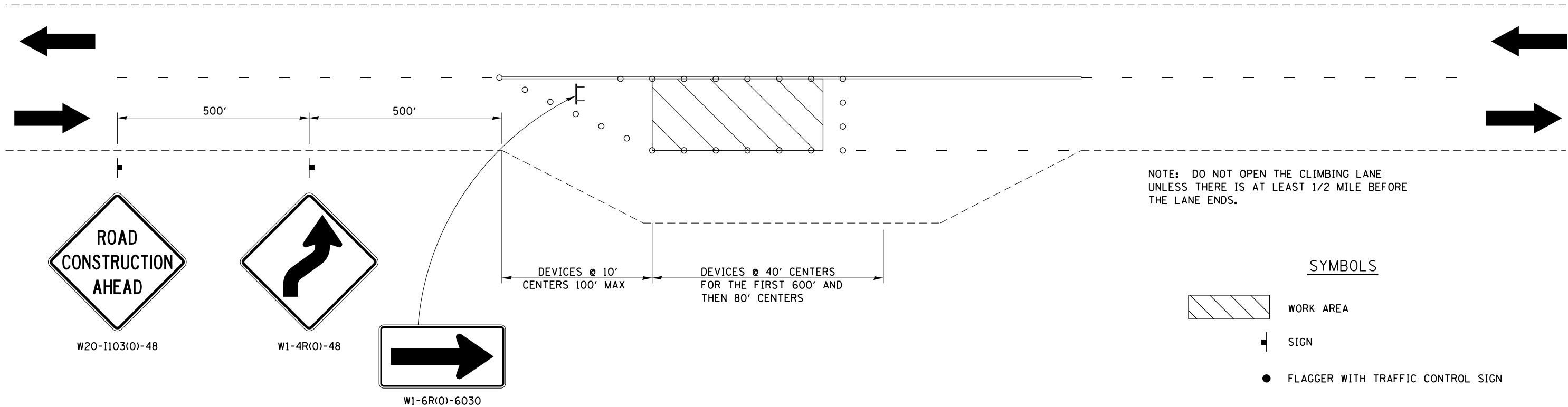


TRAFFIC CONTROL FOR THREE LANE SECTION

CASE 4

W20-1103(O)-48



NOTE: DO NOT OPEN THE CLIMBING LANE UNLESS THERE IS AT LEAST 1/2 MILE BEFORE THE LANE ENDS.

SYMBOLS

- WORK AREA
- SIGN
- FLAGGER WITH TRAFFIC CONTROL SIGN
- CONE, DRUM OR BARRICADE
- TYPE III BARRICADE

THIS TRAFFIC CONTROL DETAIL SHALL BE INCLUDED IN THE COST OF SPECIFIED TRAFFIC CONTROL STANDARDS OR ITEMS.

CASE 4 APPLIES WHEN NO WORKERS ARE PRESENT. WHEN WORKERS ARE PRESENT, TWO LANES SHALL BE CLOSED AND TRAFFIC CONTROL SHALL BE ACCORDING TO CASE 3.

FILE NAME =	USER NAME = dtzlerse	DESIGNED -	REVISED - 8-27-13	STATE OF ILLINOIS DEPARTMENT OF TRANSPORTATION	REGION 2 / DISTRICT 2 STANDARD	F.A.P. RTE.	SECTION	COUNTY	TOTAL SHEETS	SHEET NO.	
		DRAWN -	REVISED - 7-30-13			306	106M-4	JoDAVIESS	17	16	
	PLOT SCALE = 40.0000' / in.	CHECKED -	REVISED -			SCALE:		SHEET NO. OF SHEETS		STA. TO STA.	
	PLOT DATE = Fri May 30 08:41:43 2014	DATE -	REVISED -			FED. ROAD DIST. NO.		ILLINOIS FED. AID PROJECT		CONTRACT NO. 64K21	