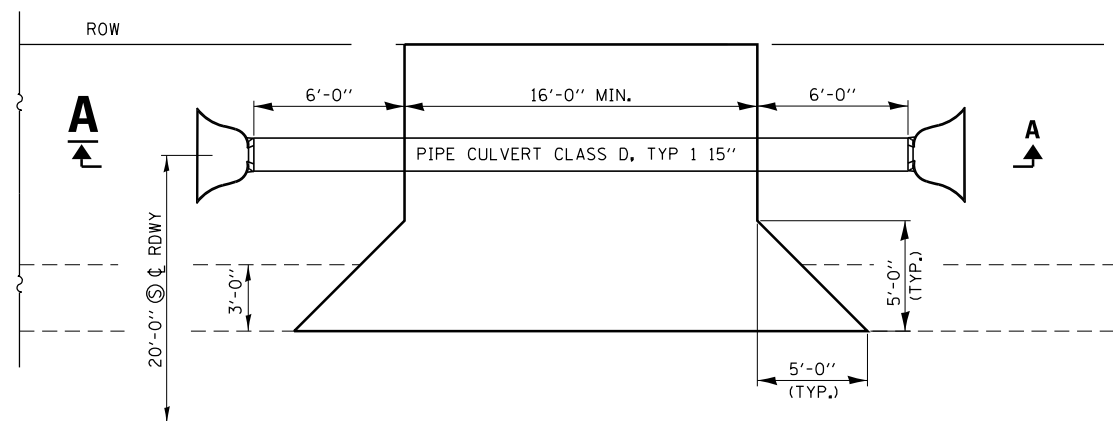


**PRIVATE ENTRANCE DETAIL**

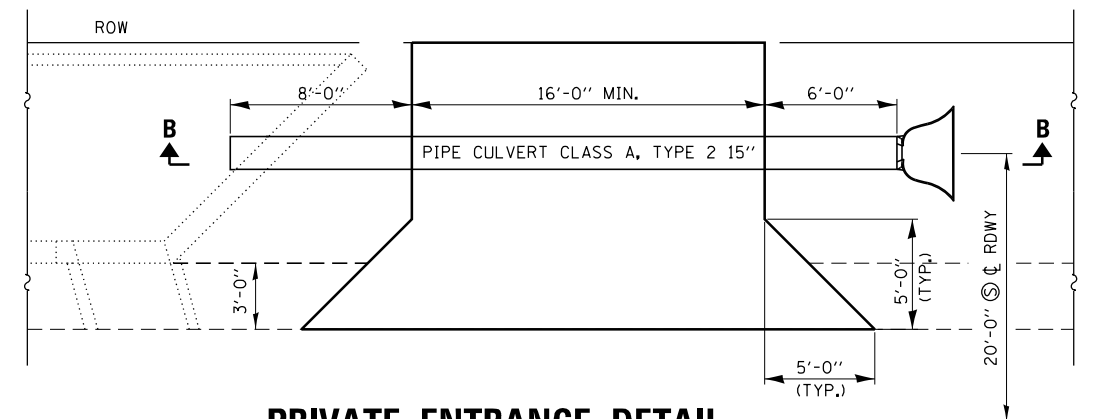
STA. 353+81 LT.



**PRIVATE ENTRANCE DETAIL**

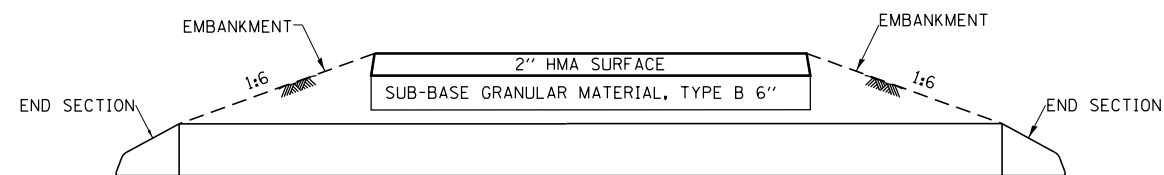
STA. 355+16 LT.  
 STA. 357+26 LT.  
 STA. 358+04 LT.

NOTE:  
 SUITABLE MATERAILS EXCAVATED FROM DITCHES  
 MAY BE USED TO RECONSTRUCT SLOPES ADJACENT  
 TO PIPE LOCATIONS.

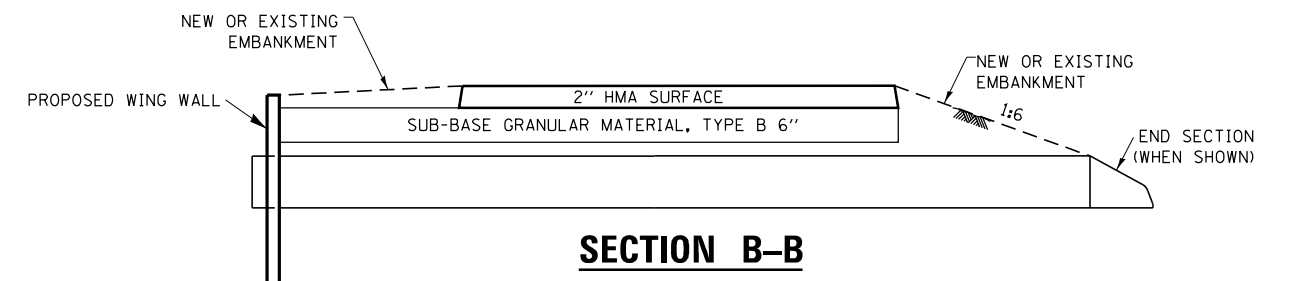


**PRIVATE ENTRANCE DETAIL**

STA. 356+76 LT.



**SECTION A-A**



**SECTION B-B**

FILE NAME =	USER NAME = woodshankr1	DESIGNED - RW	REVISED -
c:\pwork\pwork\woodshankr1\d0362707\0366035-shit-details.dgn		DRAWN - RW	REVISED -
	PLOT SCALE = 40.0000' / in.	CHECKED - HA	REVISED -
*MODELNAME*	PLOT DATE = 7/31/2014	DATE - 7/14/2014	REVISED -

STATE OF ILLINOIS  
 DEPARTMENT OF TRANSPORTATION

**ENTRANCE DETAILS**

SCALE 20 SHEET 1 OF 1 SHEETS STA. TO STA.

F.A.P. RTE.	SECTION	COUNTY	TOTAL SHEETS	SHEET NO.
623	(0)T	LASALLE	16	15
CONTRACT NO. 66D35			ILLINOIS FED. AID PROJECT	