

GUARDRAIL SCHEDULE

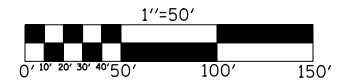
LOCATION	STATION	TO	STATION	63000001 STEEL PLATE BEAM GUARDRAIL TYPE A 6 FT POSTS (FOOT)	63100045 TRAFFIC BARRIER TERMINAL TYPE 2 (EACH)	63100167 TRAFFIC BARRIER TERMINAL TYPE 1(SPECIAL) TANGENT (EACH)	78200410 GUARDRAIL MARKER TYPE A (EACH)	78201000 TERMINAL MARKER DIRECT APPLIED (EACH)	63200310 GUARDRAIL REMOVAL (FOOT)
E.B. P.L. SHLDR	1775+18.00		1775+68.00			1.0		1.0	
E.B. P.L. SHLDR	1775+68.00		1777+93.00	225.0			4.0		
E.B. P.L. SHLDR	1777+93.00		1778+05.50		1.0			1.0	
E.B. D.L. SHLDR	1775+97.00		1776+47.00			1.0		1.0	
E.B. D.L. SHLDR	1776+47.00		1777+59.50	112.5			4.0		
E.B. D.L. SHLDR	1777+07.00		1777+57.00						50.0
W.B. P.L. SHLDR	1778+83.50		1778+96.00		1.0			1.0	
W.B. P.L. SHLDR	1778+96.00		1781+08.50	212.5			4.0		
W.B. P.L. SHLDR	1781+08.50		1781+58.50			1.0		1.0	
SUB-TOTAL =				550.0	2.0	3.0	12.0	5.0	50.0
				FOOT	EACH	EACH	EACH	EACH	FOOT

OVERHEAD SIGN STRUCTURE

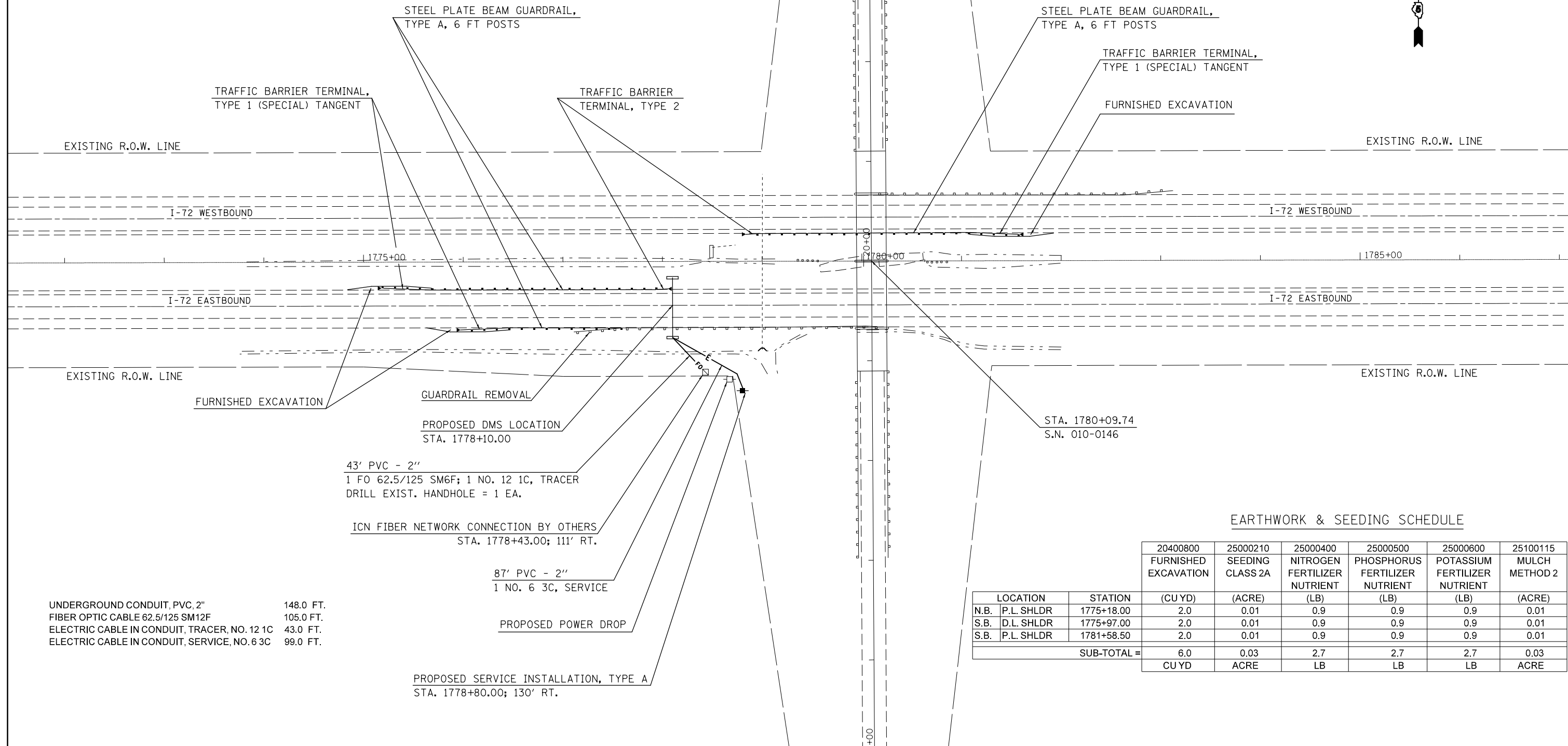
I-72 EB - MM 178.29

STRUCTURE NO.

5 S 010 I072 R178.29



SITE PLAN / CONDUIT & CABLE LAYOUT



UNDERGROUND CONDUIT, PVC, 2" 148.0 FT.  
 FIBER OPTIC CABLE 62.5/125 SM12F 105.0 FT.  
 ELECTRIC CABLE IN CONDUIT, TRACER, NO. 12 1C 43.0 FT.  
 ELECTRIC CABLE IN CONDUIT, SERVICE, NO. 6 3C 99.0 FT.

EARTHWORK & SEEDING SCHEDULE

LOCATION	STATION	(CU YD)	(ACRE)	(LB)	(LB)	(LB)	(ACRE)
N.B. P.L. SHLDR	1775+18.00	2.0	0.01	0.9	0.9	0.9	0.01
S.B. D.L. SHLDR	1775+97.00	2.0	0.01	0.9	0.9	0.9	0.01
S.B. P.L. SHLDR	1781+58.50	2.0	0.01	0.9	0.9	0.9	0.01
SUB-TOTAL =		6.0	0.03	2.7	2.7	2.7	0.03
		CU YD	ACRE	LB	LB	LB	ACRE

FILE NAME =	USER NAME = cearlockjd	DESIGNED -	REVISED -
c:\pw\work\p1d0t\cearlockjd\0340463\0570026-sht-plan_50.dgn		DRAWN -	REVISED -
	PLOT SCALE = 100.0000' / in.	CHECKED -	REVISED -
*MODELNAME*	PLOT DATE = 6/26/2014	DATE -	REVISED -

STATE OF ILLINOIS  
 DEPARTMENT OF TRANSPORTATION

PLAN SHEET  
 FAI - 72 EB / MM 178.29

SCALE: SHEET OF SHEETS STA. TO STA.

F.A.I. RTE.	SECTION	COUNTY	TOTAL SHEETS	SHEET NO.
VAR.	FY2014 ITS-1	CHAMPAIGN	71	21
			CONTRACT NO. 70A26	
ILLINOIS FED. AID PROJECT				