

B I L L O F M A T E R I A L S

I-74 & LINCOLN AVE.

**PTZ CAMERA INSTALLATION &
FIBER OPTIC CONNECTION**

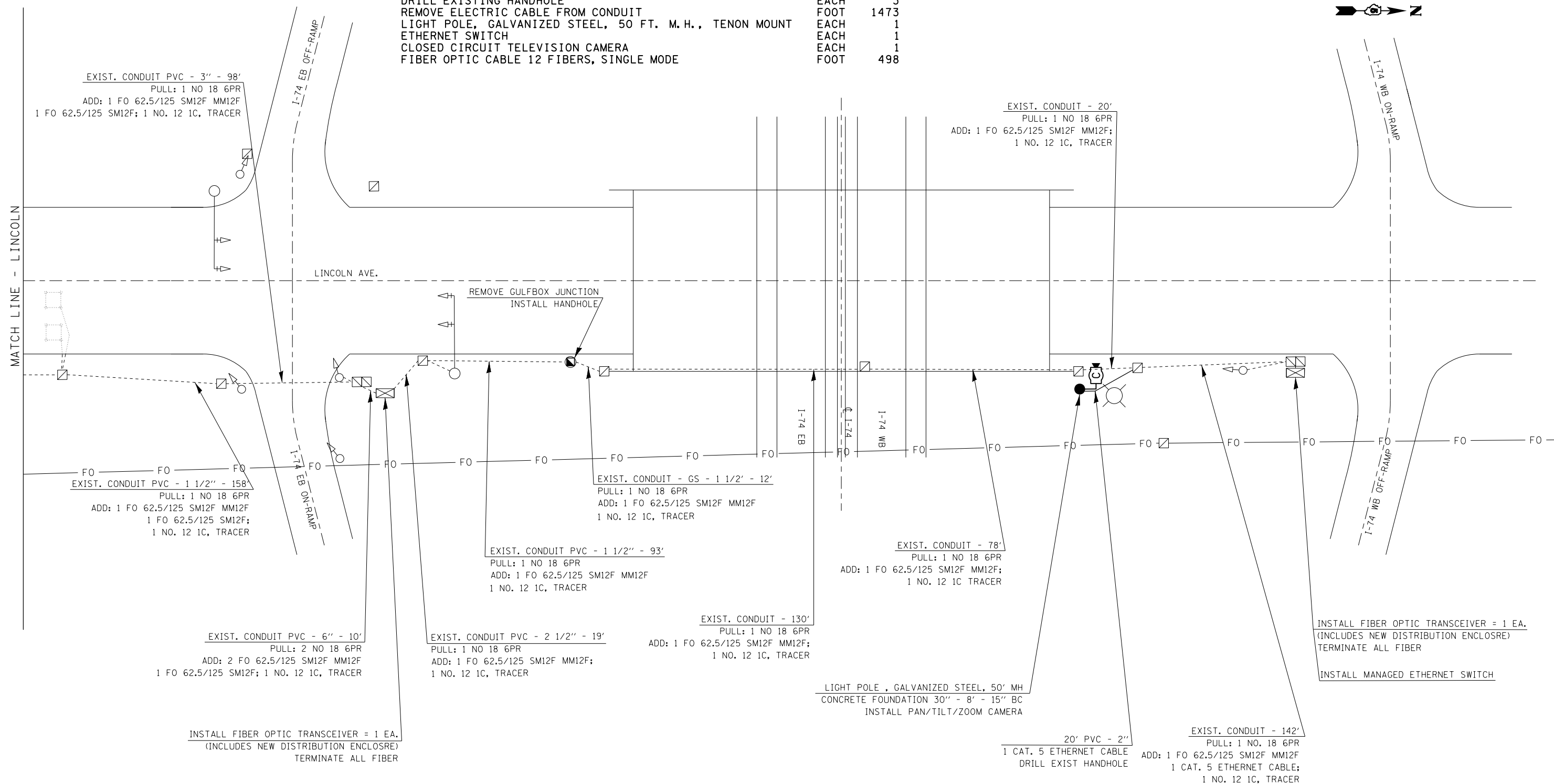
**LINCOLN AVE.
&
I-74**

(NOT TO SCALE)

CAMERA & CONDUIT /CABLE LAYOUT



ITEM	UNIT	QUANTITY
UNDERGROUND CONDUIT, PVC, 2" DIA.	FOOT	80
HANDHOLE	EACH	1
GULFBOX JUNCTION REMOVAL	EACH	1
LIGHT POLE FOUNDATION, 30" DIAMETER	FOOT	8
TRANSCEIVER - FIBER OPTIC	EACH	3
FIBER OPTIC CABLE IN CONDUIT, NO. 62.5/125, MM12F SM12F	FOOT	1495
ELECTRIC CABLE IN CONDUIT, TRACER, NO. 12 1C	FOOT	1032
DRILL EXISTING HANDHOLE	EACH	3
REMOVE ELECTRIC CABLE FROM CONDUIT	FOOT	1473
LIGHT POLE, GALVANIZED STEEL, 50 FT. M. H., TENON MOUNT	EACH	1
ETHERNET SWITCH	EACH	1
CLOSED CIRCUIT TELEVISION CAMERA	EACH	1
FIBER OPTIC CABLE 12 FIBERS, SINGLE MODE	FOOT	498



FILE NAME =	USER NAME = ceerlockjd	DESIGNED -	REVISED -
ei:\pw\work\p\id\ceerlockjd\0340463\PTZ camera plans.dgn		DRAWN -	REVISED -
\$MODELNAME\$	PLOT SCALE = 100.0000' / 1in.	CHECKED -	REVISED -
	PLOT DATE = 6/26/2014	DATE -	REVISED -

**STATE OF ILLINOIS
DEPARTMENT OF TRANSPORTATION**

SCALE:	SHEET	OF	SHEETS	STA.	TO	STA.
--------	-------	----	--------	------	----	------

F.A.P. RTE.	SECTION	COUNTY	TOTAL SHEETS	SHEET NO.
VAR.	FY2014 ITS-1	CHAMPAIGN	71	39
CONTRACT NO. 70A26			ILLINOIS FED. AID PROJECT	