

STATE OF ILLINOIS
DEPARTMENT OF TRANSPORTATION
DIVISION OF HIGHWAYS
PROPOSED
HIGHWAY PLANS

FOR INDEX OF SHEETS, SEE SHEET NO. 2

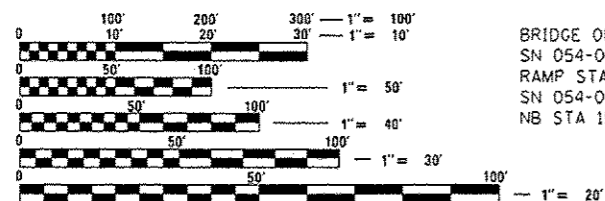
FAI ROUTE 55 & 155 (I-55 & I-155)
SECTION (54-4,54-5)RS-3, (54-6)RS-2

RESURFACING, 3R
LOGAN COUNTY

C-96-169-10

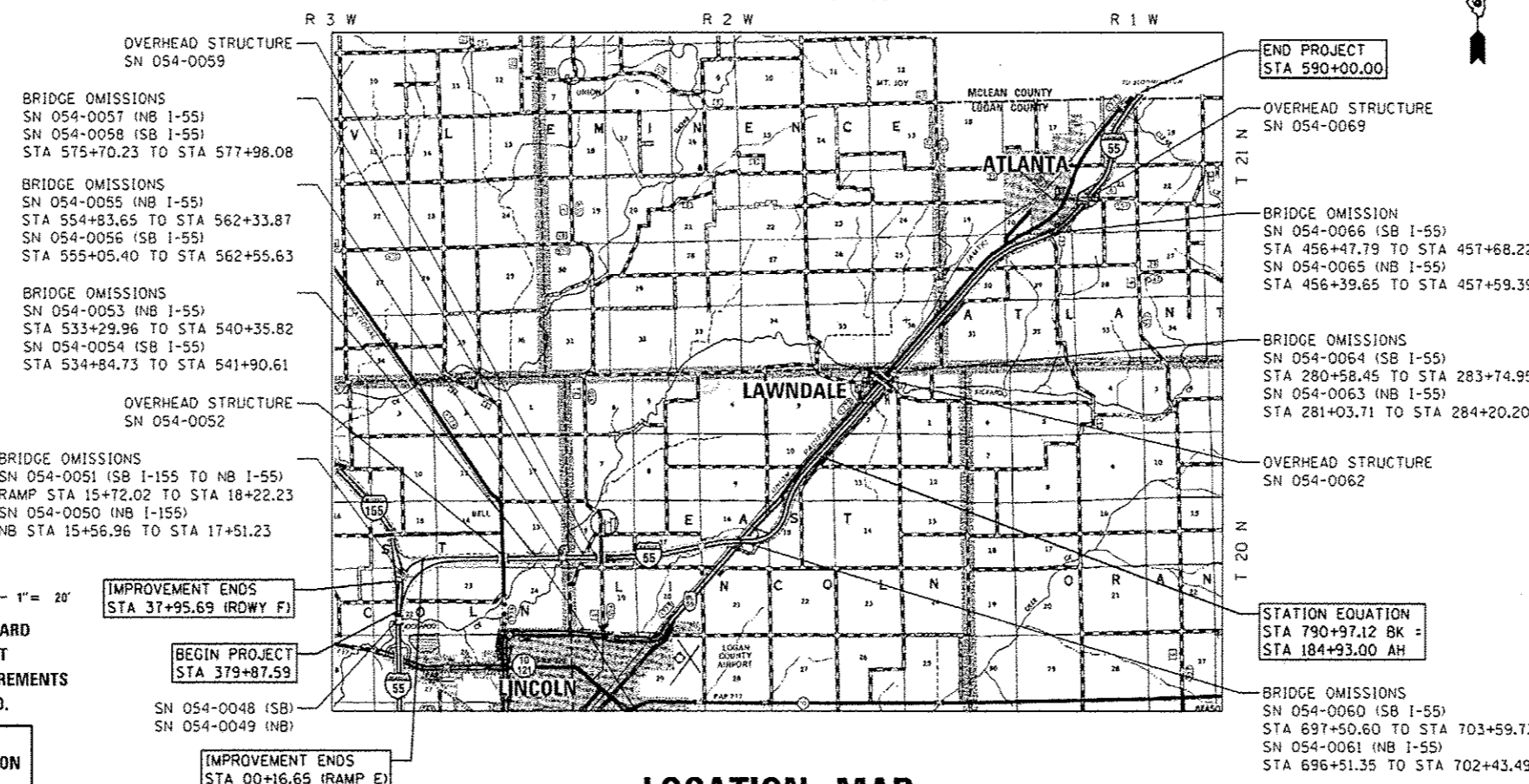
F.A.I. RTE.	SECTION	COUNTY	TOTAL SHEETS	SHEET NO.
55/155		LOGAN	108	1
		ILLINOIS	CONTRACT NO. 72D41	
		** (54-4,54-5)RS-3, (54-6)RS-2		

D-96-169-10



FULL SIZE PLANS HAVE BEEN PREPARED USING STANDARD ENGINEERING SCALES. REDUCED SIZED PLANS WILL NOT CONFORM TO STANDARD SCALES. IN MAKING MEASUREMENTS ON REDUCED PLANS, THE ABOVE SCALES MAY BE USED.

J.U.L.I.E.
 JOINT UTILITY LOCATION INFORMATION FOR EXCAVATION
 1-800-892-0123
 OR 811



OVERHEAD STRUCTURE
 SN 054-0059

BRIDGE OMISSIONS
 SN 054-0057 (NB I-55)
 SN 054-0058 (SB I-55)
 STA 575+70.23 TO STA 577+98.08

BRIDGE OMISSIONS
 SN 054-0055 (NB I-55)
 STA 554+83.65 TO STA 562+33.87
 SN 054-0056 (SB I-55)
 STA 555+05.40 TO STA 562+55.63

BRIDGE OMISSIONS
 SN 054-0053 (NB I-55)
 STA 533+29.96 TO STA 540+35.82
 SN 054-0054 (SB I-55)
 STA 534+84.73 TO STA 541+90.61

OVERHEAD STRUCTURE
 SN 054-0052

BRIDGE OMISSIONS
 SN 054-0051 (SB I-155 TO NB I-55)
 RAMP STA 15+72.02 TO STA 18+22.23
 SN 054-0050 (NB I-155)
 NB STA 15+56.96 TO STA 17+51.23

END PROJECT
 STA 990+00.00

OVERHEAD STRUCTURE
 SN 054-0069

BRIDGE OMISSION
 SN 054-0066 (SB I-55)
 STA 456+47.79 TO STA 457+68.22
 SN 054-0065 (NB I-55)
 STA 456+39.65 TO STA 457+59.39

BRIDGE OMISSIONS
 SN 054-0064 (SB I-55)
 STA 280+58.45 TO STA 283+74.95
 SN 054-0063 (NB I-55)
 STA 281+03.71 TO STA 284+20.20

OVERHEAD STRUCTURE
 SN 054-0062

STATION EQUATION
 STA 790+97.12 BK =
 STA 184+93.00 AH

BRIDGE OMISSIONS
 SN 054-0060 (SB I-55)
 STA 697+50.60 TO STA 703+59.73
 SN 054-0061 (NB I-55)
 STA 696+51.35 TO STA 702+43.49

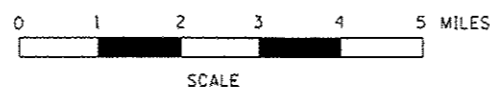
IMPROVEMENT ENDS
 STA 37+95.69 (RDWY F)

BEGIN PROJECT
 STA 379+87.59

SN 054-0048 (SB)
 SN 054-0049 (NB)

IMPROVEMENT ENDS
 STA 00+16.65 (RAMP E)

LOCATION MAP



GROSS LENGTH = 81,616.53 FT = 15.458 MI
 NET LENGTH = 78,964.88 FT = 14.956 MI

PROJECT ENGINEER: KEITH DONOVAN (217) 782-4761
 TEAM MANAGER: TOM COX (217) 557-6349
 CONTRACT NO. 72D41

STATE OF ILLINOIS
 DEPARTMENT OF TRANSPORTATION
 DIVISION OF HIGHWAYS

SUBMITTED July 11 2014
Logan Z...
 DEPUTY DIRECTOR OF HIGHWAYS, REGION ENGINEER

Aug 15 2014
John D. Baranzelli, P.E.
 ENGINEER OF DESIGN AND ENVIRONMENT

Aug 15 2014
Omer Osman, P.E.
 DIRECTOR OF HIGHWAYS, CHIEF ENGINEER

PRINTED BY THE AUTHORITY
OF THE STATE OF ILLINOIS