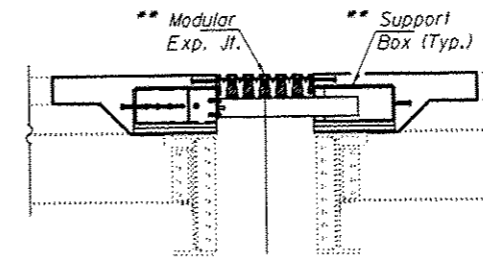


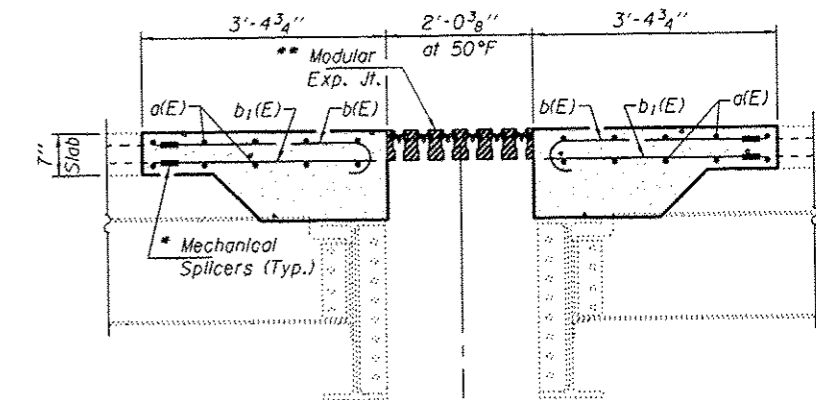
SECTION A-A

* Cut existing reinforcement 6" from removal line to facilitate installation of Mechanical Splicers.



SECTION B-B

(Showing Support Boxes)



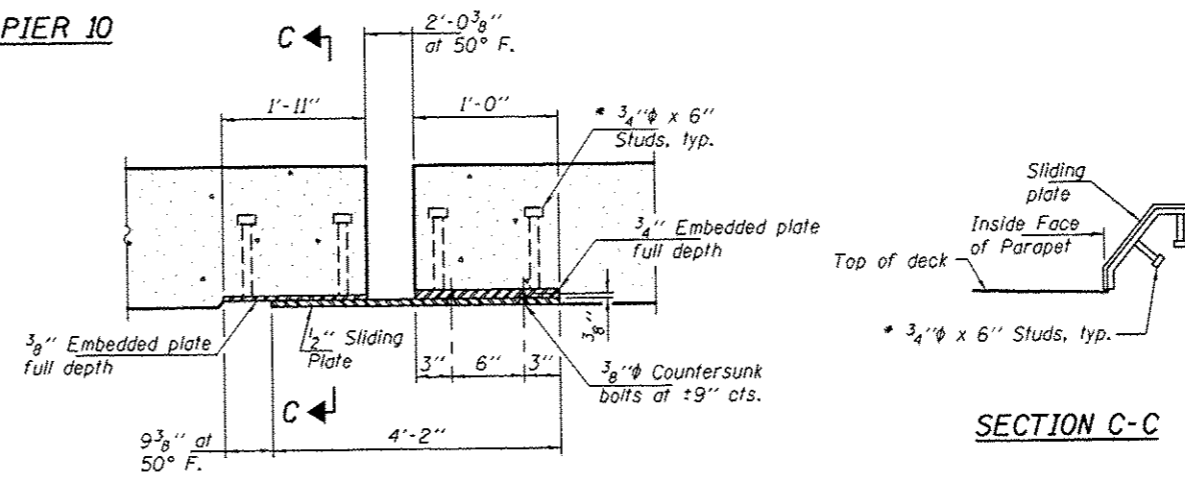
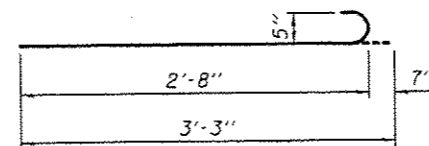
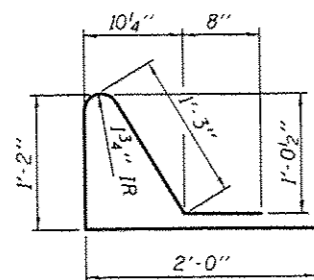
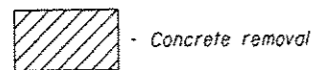
SECTION B-B

(Showing Reinforcement)

** Number of rails determined by manufacturer. Support Boxes to be rigidly attached to Stringers & Floor Beams by adjustable brackets, stools, or shims as determined by manufacturer. Reuse existing mounting bracket holes. See sheet 6 of 14 for locations.

CONCRETE REMOVAL AT PIER 10

CONCRETE REPLACEMENT AT PIER 10



SECTION C-C

CURB SLIDING PLATE DETAIL

Cost included with the cost of the modular joint.

BILL OF MATERIAL (PIER 10)

Bar	No.	Size	Length	Shape		
a(E)	40	#5	14'-8"	—		
a ₁ (E)	12	#6	4'-0"	—		
b(E)	64	#5	3'-3"	—		
b ₁ (E)	62	#5	2'-9"	—		
d(E)	16	#5	5'-2"	⊓		
Concrete Removal					Cu. Yd.	7.7
Concrete Superstructure					Cu. Yd.	7.5
Bar Splicers					Each	20
Mechanical Splicers					Each	126
Reinforcement Bars, Epoxy Coated					Pounds	1170

DESIGNED - ATH	EXAMINED - <i>Timothy A. Dault</i>	DATE - AUGUST 18, 2014
CHECKED - VHV	ACTING ENGINEER OF STRUCTURAL SERVICES	
DRAWN - Kyle M. Steffen	PASSED - <i>Carl Perry</i>	REVISED
CHECKED - ATH VHV	ACTING ENGINEER OF BRIDGES AND STRUCTURES	REVISED

STATE OF ILLINOIS
DEPARTMENT OF TRANSPORTATION

PIER 10 JOINT REPLACEMENT DETAILS
SN 009-0001

SHEET NO. 5 OF 14 SHEETS

F.A.P. RTE.	SECTION	COUNTY	TOTAL SHEETS	SHEET NO.
310	186/BJR	CASS	19	10
			CONTRACT NO. 72H29	
ILLINOIS FED. AID PROJECT				