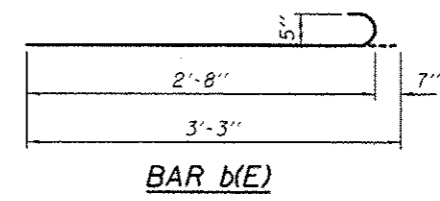
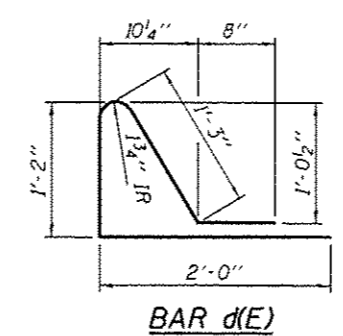
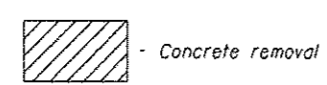


CONCRETE REMOVAL AT PIER 13

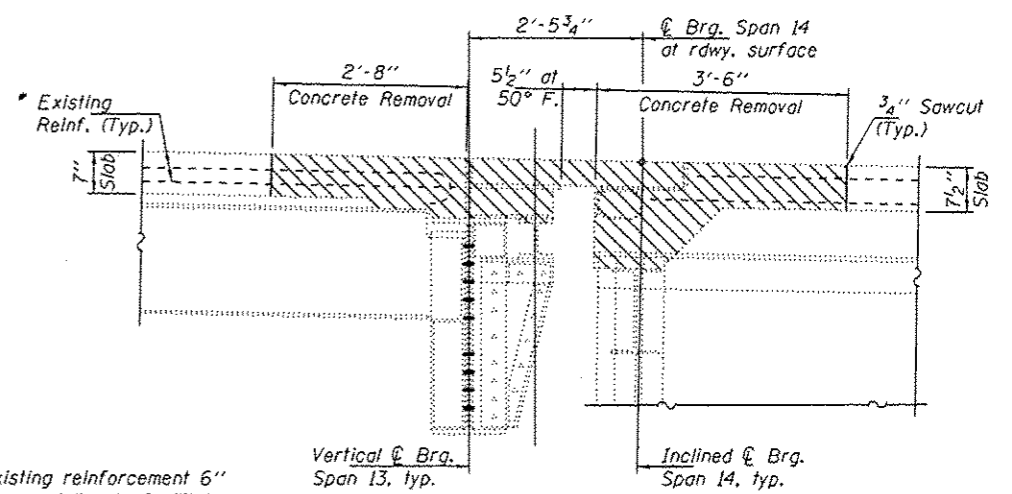
CONCRETE REPLACEMENT AT PIER 13



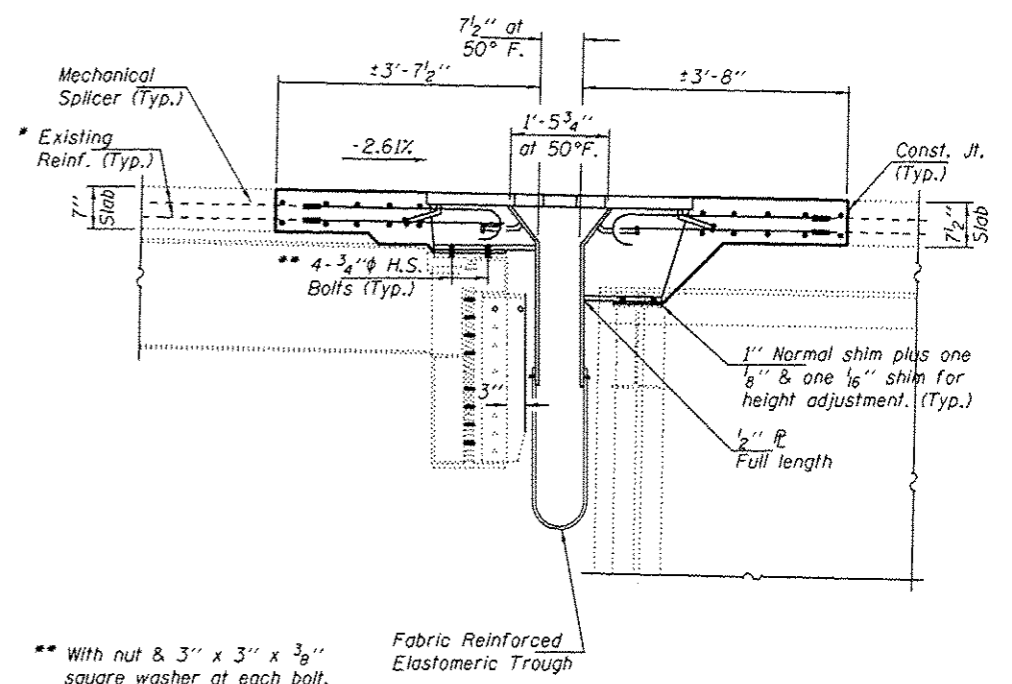
* Cut existing reinforcement 6" from removal line to facilitate installation of Mechanical Splicers.

* Existing reinforcement bars extending into the removal area shall be cleaned, straightened and incorporated into the new construction. Any reinforcement bars that are damaged during concrete removal shall be replaced with an approved bar splicer or anchorage system. Cost included with Concrete Removal.

** With nut & 3" x 3" x 3/8" square washer at each bolt. 2" φ holes in stool flange. Field drill 7/8" φ holes in diaphragms and beam flanges.



SECTION A-A
See sheet 12 of 14 for Structural steel removal.



SECTION B-B
For Trough details, see sheets 8 & 9 of 14.

BILL OF MATERIAL (PIER 13)

Bar	No.	Size	Length	Shape
d(E)	40	#5	14'-8"	—
a1(E)	12	#6	4'-0"	—
b1(E)	66	#5	3'-3"	—
b1(E)	67	#5	2'-9"	—
d(E)	17	#5	5'-2"	Δ
Concrete Removal		Cu. Yd.	5.7	
Concrete Superstructure		Cu. Yd.	5.7	
Bar Splicers		Each	20	
Mechanical Splicers		Each	133	
Reinforcement Bars, Epoxy Coated		Pounds	1190	

DESIGNED - ATH	EXAMINED - <i>Timothy A. Bault</i>	DATE - AUGUST 18, 2014
CHECKED - VHV	ACTING ENGINEER OF STRUCTURAL SERVICES	
DRAWN - Kyle M. Steffen	PASSED - <i>Carl Perry</i>	REVISED
CHECKED - ATH VHV	ACTING ENGINEER OF BRIDGES AND STRUCTURES	REVISED

STATE OF ILLINOIS
DEPARTMENT OF TRANSPORTATION

PIER 13 FINGER PLATE JOINT
SN 009-0001

F.A.P. RTE. 310	SECTION 186)BJR	COUNTY CASS	TOTAL SHEETS 19	SHEET NO. 12
CONTRACT NO. 72H29			ILLINOIS FED. AID PROJECT	