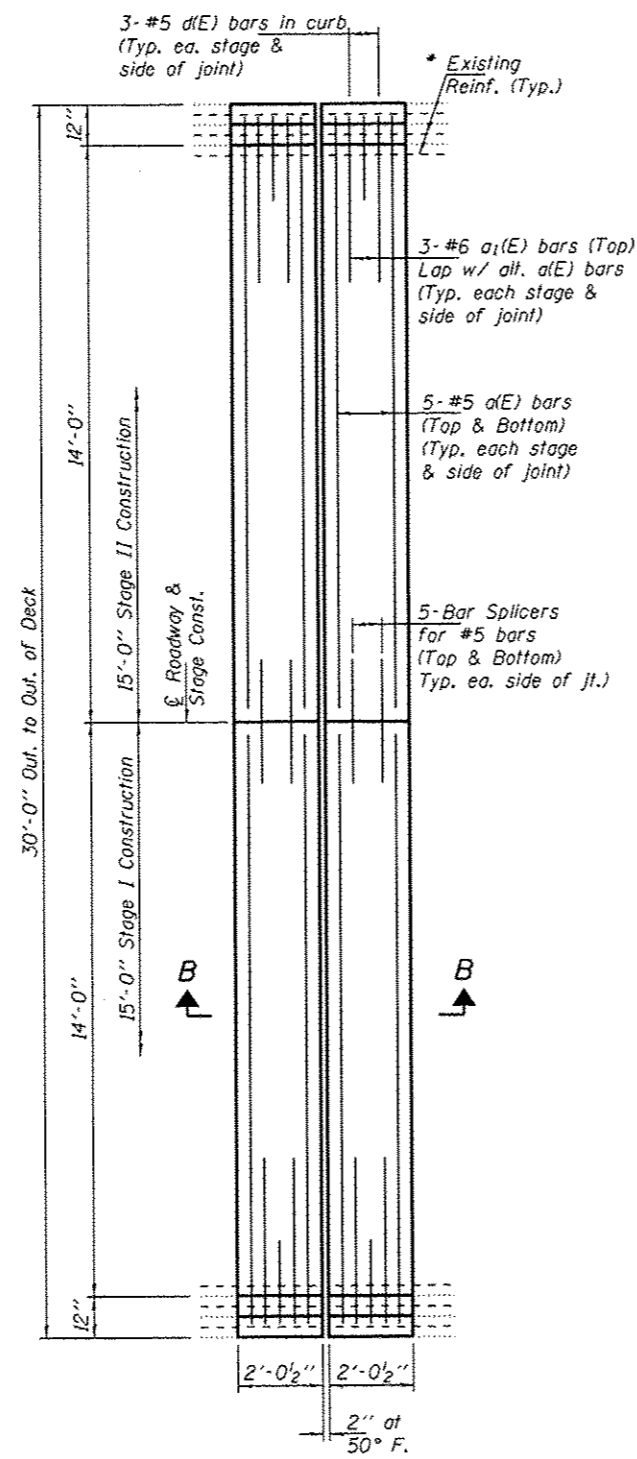
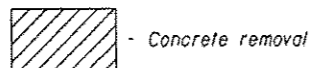
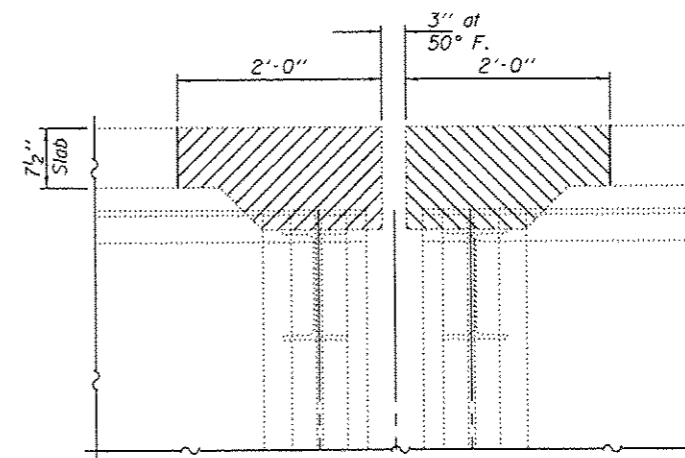


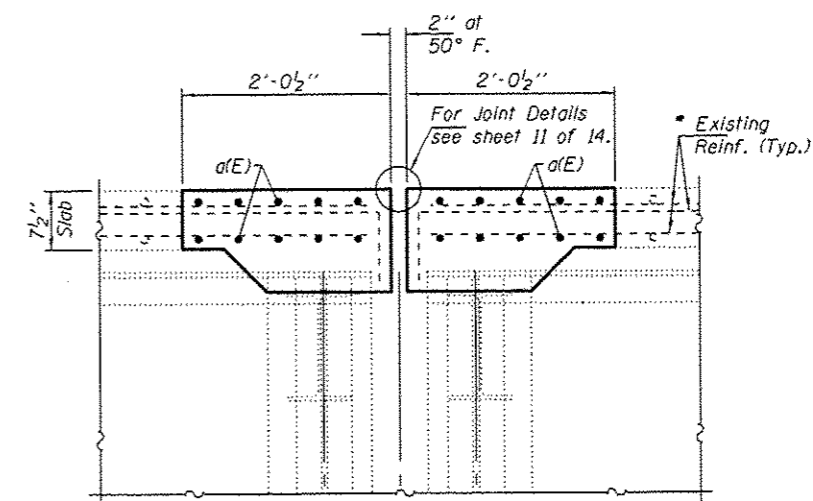
CONCRETE REMOVAL AT PIER 16



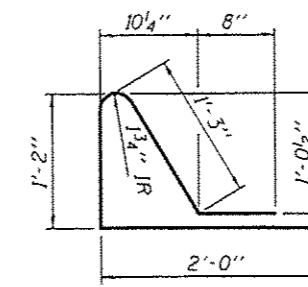
CONCRETE REPLACEMENT AT PIER 16



SECTION A-A



SECTION B-B



BAR d(E)

BILL OF MATERIAL (PIER 16)

Bar	No.	Size	Length	Shape
d(E)	40	#5	14'-8"	—
a1(E)	2	#6	4'-0"	—
d(E)	12	#5	5'-2"	⌒
Concrete Removal			Cu. Yd.	4.7
Concrete Superstructure			Cu. Yd.	5.0
Bar Splicers			Each	20
Reinforcement Bars, Epoxy Coated			Pounds	750

\* Existing reinforcement bars extending into the removal area shall be cleaned, straightened and incorporated into the new construction. Any reinforcement bars that are damaged during concrete removal shall be replaced with an approved bar splicer or anchorage system. Cost included with Concrete Removal.

DESIGNED - ATH	EXAMINED - <i>Timothy A. Dault</i>	DATE - AUGUST 18, 2014
CHECKED - VHV	ACTING ENGINEER OF STRUCTURAL SERVICES	
DRAWN - Kyle M. Stoffon	PASSED - <i>Carl [Signature]</i>	REVISED
CHECKED - ATH VHV	ACTING ENGINEER OF BRIDGES AND STRUCTURES	REVISED

STATE OF ILLINOIS  
DEPARTMENT OF TRANSPORTATION

PIER 16 JOINT REPLACEMENT DETAILS  
SN 009-0001

SHEET NO. 10 OF 14 SHEETS

F.A.P. RTE. 310	SECTION (B6)BJR	COUNTY CASS	TOTAL SHEETS 19	SHEET NO. 15
CONTRACT NO. 72H29			ILLINOIS FED. AID PROJECT	