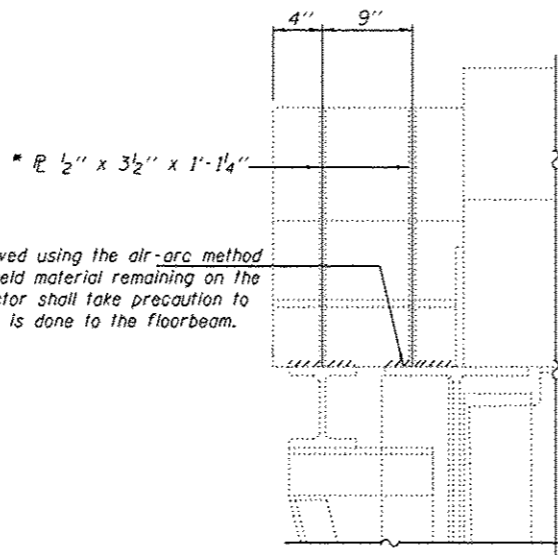


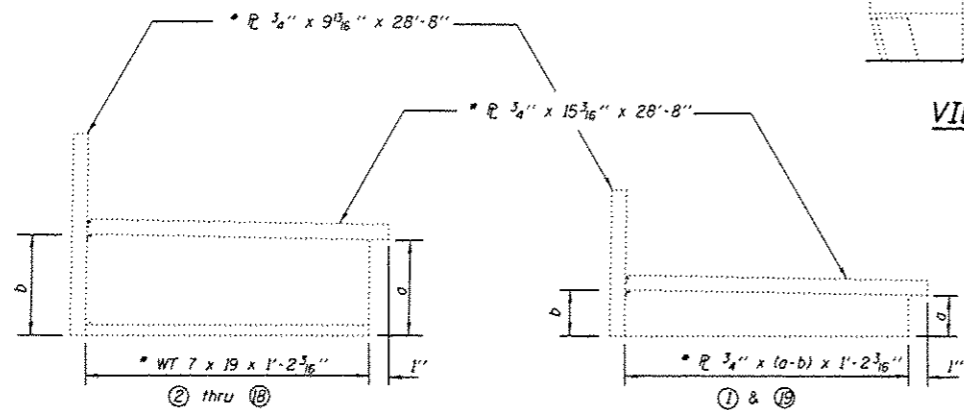
	1	2	3	4	5	6	7	8	9	10	11	12	13	14	15	16	17	18	19
a	2 1/8"	2 5/16"	2 5/8"	2 5/8"	3 1/4"	3 9/16"	3 7/8"	4 1/16"	4 5/8"	4 3/4"	4 3/8"	3 7/8"	3 9/16"	3 4"	2 5/8"	2 5/8"	2 5/8"	2 5/8"	2 5/8"
b	2 3/8"	2 9/16"	2 7/8"	3 3/16"	3 1/2"	3 5/16"	4 1/8"	4 1/16"	4 3/4"	5 1/16"	4 3/4"	4 7/16"	4 1/8"	3 3/8"	3 1/2"	3 3/16"	2 7/8"	2 9/16"	2 3/8"

UPPER SUPPORT BRACKET  
AT PIER 8



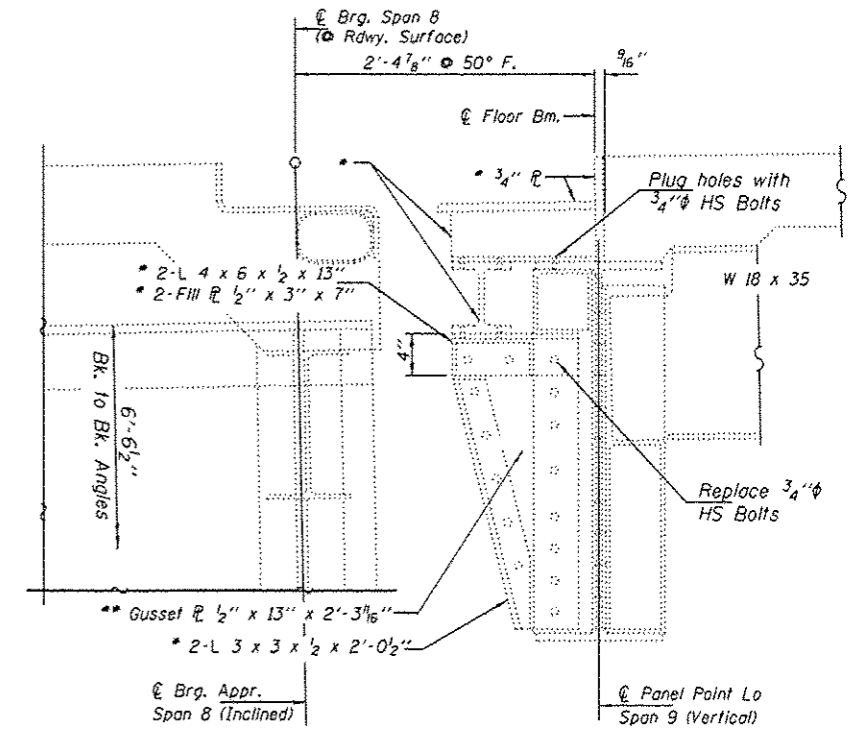
Existing R to be removed using the air-arc method and grind smooth all weld material remaining on the floorbeam. The contractor shall take precaution to ensure that no damage is done to the floorbeam.

VIEW A-A

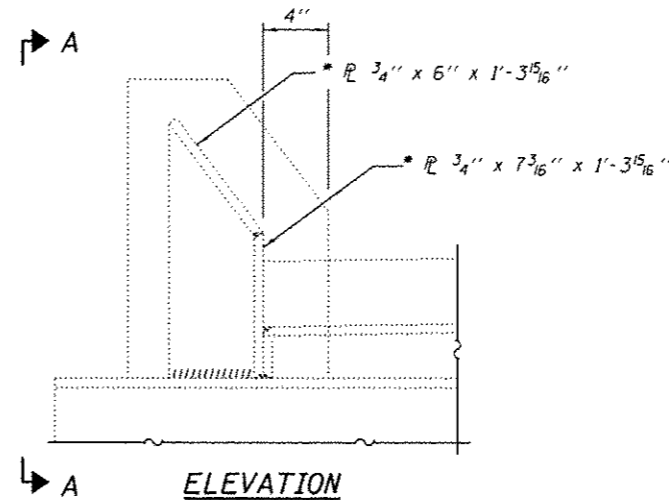


	1	2	3	4	5	6	7	8	9	10	11	12	13	14	15	16	17	18	19
a	2 1/8"	2 1/8"	2 9/16"	2 7/8"	3 1/16"	3 1/2"	3 3/8"	4 1/8"	4 1/16"	4 3/4"	4 1/16"	4 1/8"	3 3/8"	3 1/2"	3 3/16"	2 7/8"	2 9/16"	2 1/4"	2 1/8"
b	2 7/16"	2 5/8"	2 5/8"	3 1/4"	3 9/16"	3 7/8"	4 3/16"	4 1/2"	4 1/16"	5 1/8"	4 1/16"	4 1/2"	4 3/16"	3 7/8"	3 3/16"	3 1/4"	2 9/16"	2 5/8"	2 1/16"

UPPER SUPPORT BRACKET  
AT PIER 13

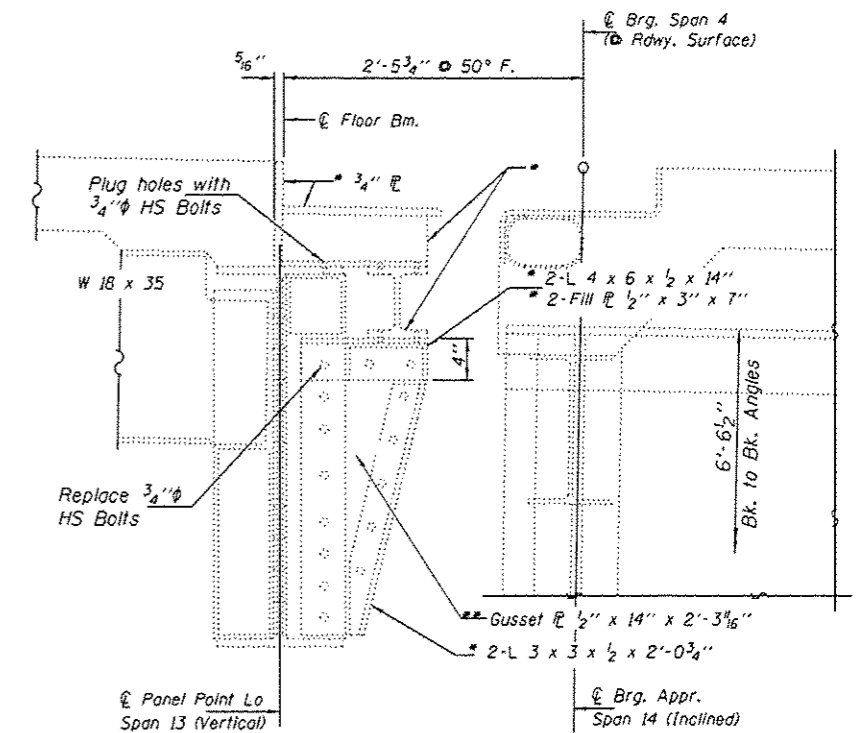


TYPICAL STEEL REMOVAL DETAILS  
AT PIER 8



ELEVATION

CURB REMOVAL DETAILS



TYPICAL STEEL REMOVAL DETAILS  
AT PIER 13

\* Structural Steel Removal.

\*\* Cut/trim vertically, 3" from Brg. R/L 6x4x1/2 or as shown on Section B-B, on sheets 3 & 7 of 14.

DESIGNED - ATH  
CHECKED - VHV  
DRAWN - Kyle M. Steffen  
CHECKED - ATH VHV

EXAMINED  
PASSED  
ACTING ENGINEER OF STRUCTURAL SERVICES  
ACTING ENGINEER OF BRIDGES AND STRUCTURES

DATE - AUGUST 18, 2014  
REVISED  
REVISED

STATE OF ILLINOIS  
DEPARTMENT OF TRANSPORTATION

STEEL REMOVAL DETAILS  
SN 009-0001

SHEET NO. 12 OF 14 SHEETS

F.A.P. RTE.	SECTION	COUNTY	TOTAL SHEETS	SHEET NO.
310	(B6)BJR	CASS	19	17
CONTRACT NO. 72H29				
ILLINOIS FED. AID PROJECT				