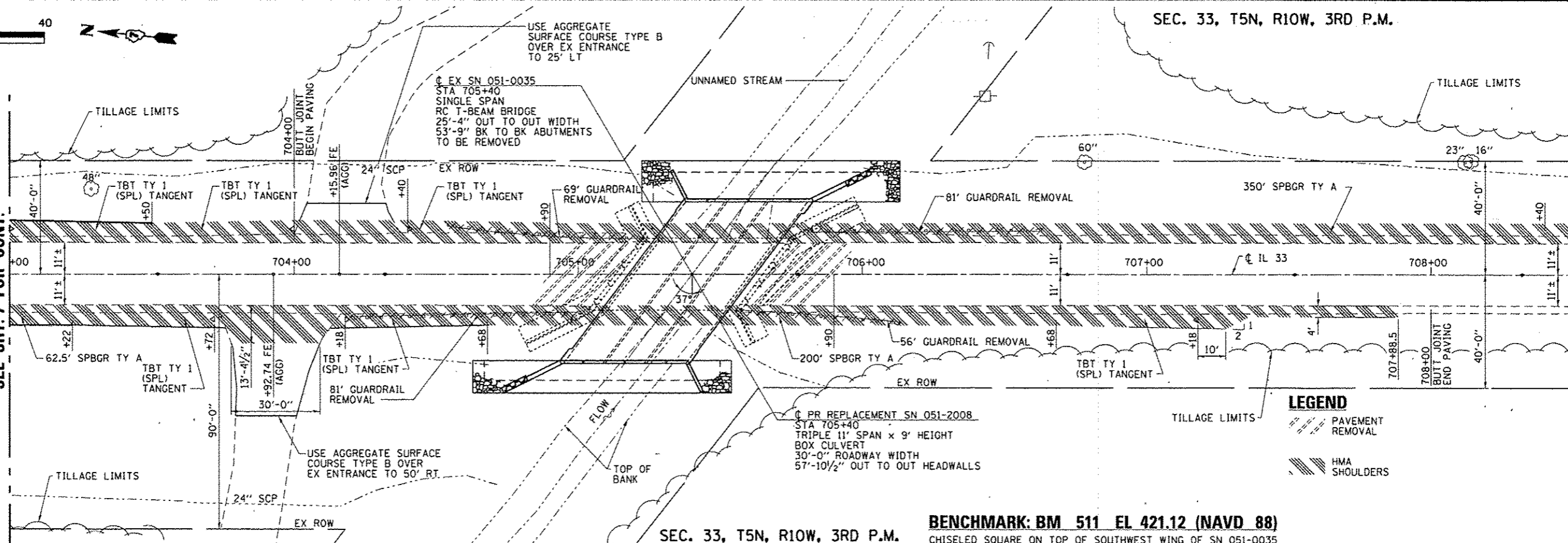


SEC. 33, T5N, R10W, 3RD P.M.

MATCH LINE STA. 703+00
SEE SHT. 7 FOR CONT.

MATCH LINE STA. 708+50
SEE SHT. 9 FOR CONT.

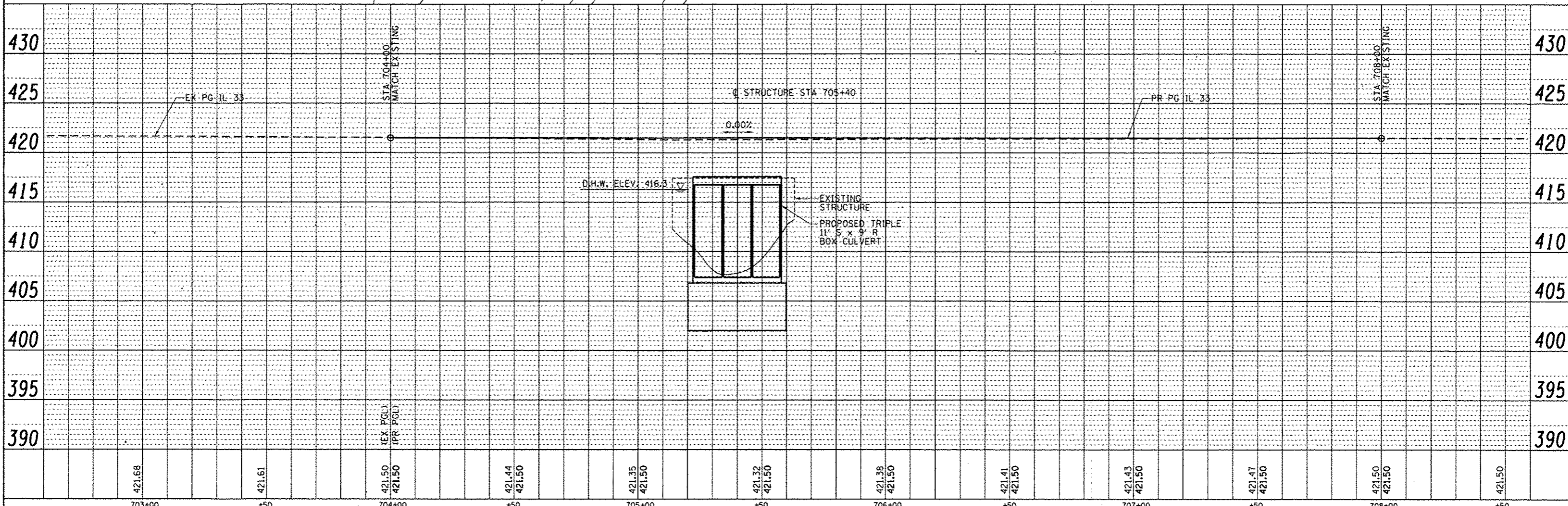


LEGEND

	PAVEMENT REMOVAL
	HMA SHOULDERS

SEC. 33, T5N, R10W, 3RD P.M.

BENCHMARK: BM 511 EL 421.12 (NAVD 88)
CHISELED SQUARE ON TOP OF SOUTHWEST WING OF SN 051-0035



PLAN

DATE	
BY	
REVISIONS	
NO.	
DESCRIPTION	

PROFILE

DATE	
BY	
REVISIONS	
NO.	
DESCRIPTION	

FILE NAME: D774105-sh1-plnpr F82.dgn	USER NAME: staffanmk	DESIGNED: DAJ	REVISED:	STATE OF ILLINOIS DEPARTMENT OF TRANSPORTATION	FAP RTE 781 (IL 33) PLAN AND PROFILE	F.A.P. RTE. 781	SECTION 109B-1	COUNTY LAWRENCE	TOTAL SHEETS 34	SHEET NO. 8
PLOT SCALE: 0.16667' / in.	CHECKED: ELH	DESIGNED: HAS	REVISED:			CONTRACT NO. 74105				
PLOT DATE: 6/2/2014	DATE: 05/10	CHECKED: ELH	REVISED:			FED. ROAD DIST. NO.	ILLINOIS FED. AID PROJECT			
SCALES: (HORIZ) 1"=20'-0" (VERT) 1"=5'						SCALE: 1"=20'-0"	SHEET NO. 2 OF 3 SHEETS	STA. 703+00 TO STA. 708+50		