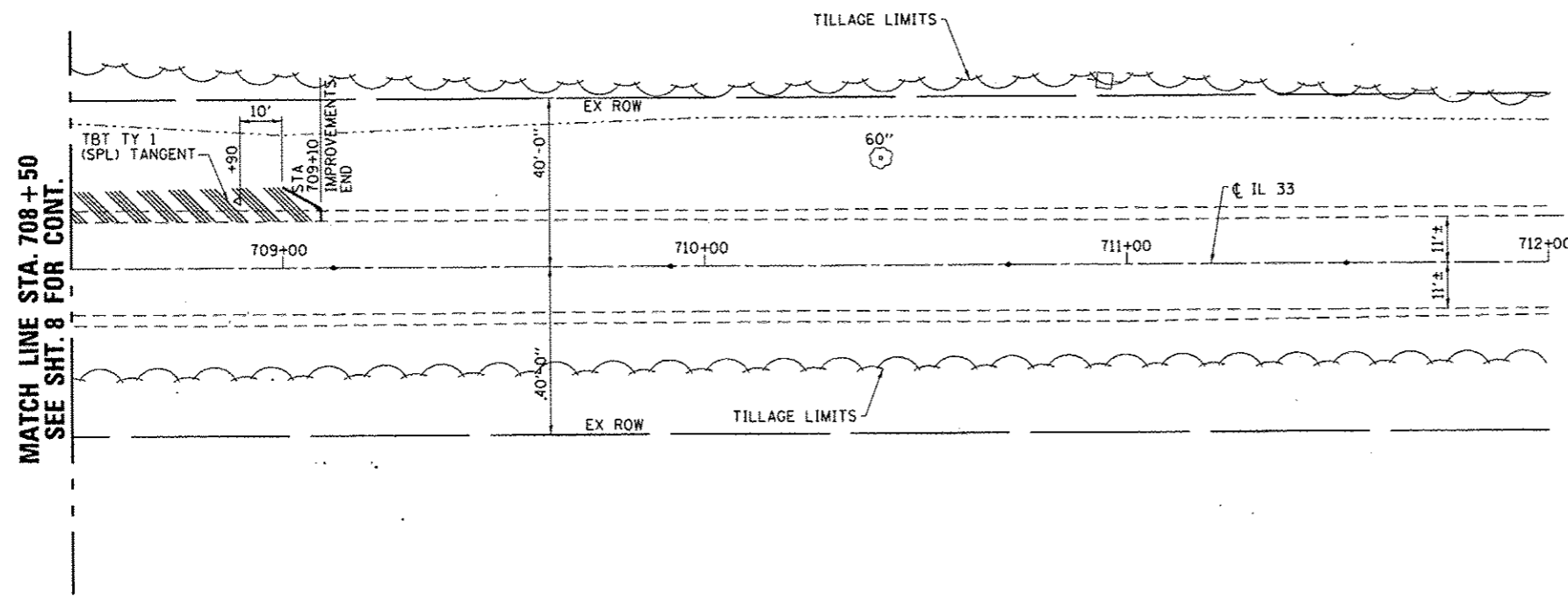
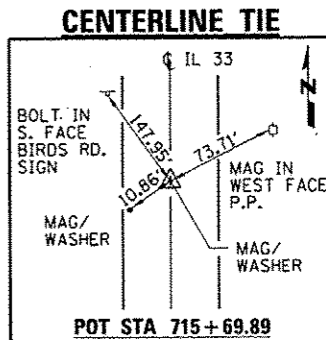


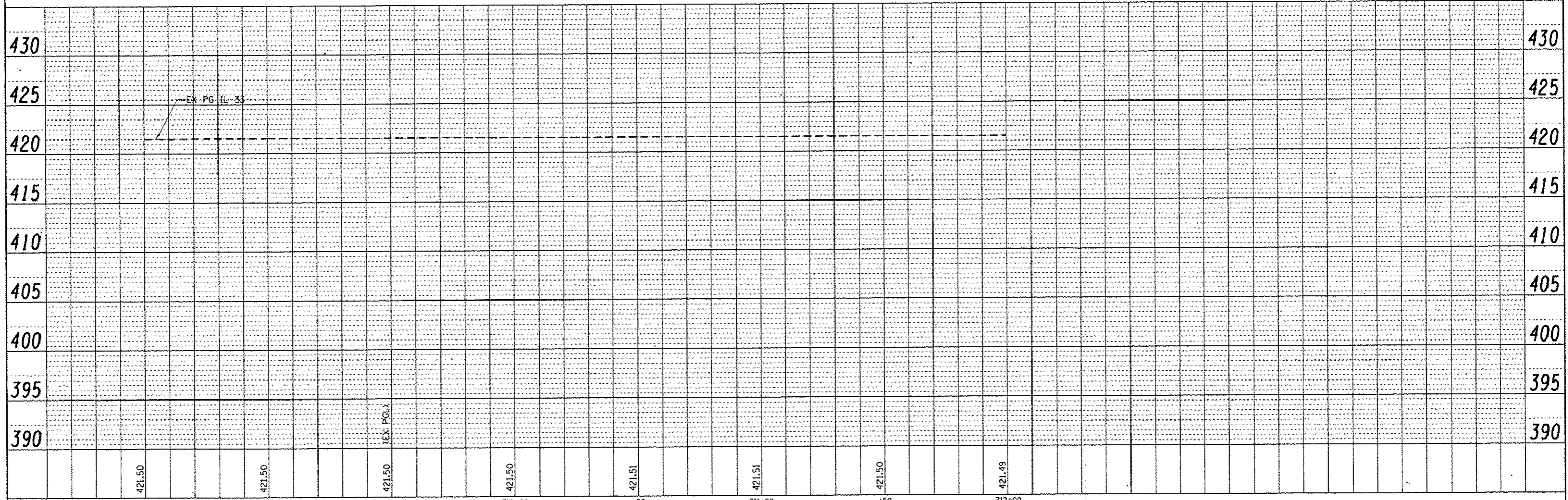
SEC. 33, T5N, R10W, 3RD P.M.



MATCH LINE STA. 708+50  
SEE SHT. 8 FOR CONT.



SEC. 33, T5N, R10W, 3RD P.M.



PLAN	DATE
BY	
DESIGNED	
DRAWN	
CHECKED	
DATE	

PROFILE	DATE
BY	
DESIGNED	
DRAWN	
CHECKED	
DATE	

FILE NAME : 0774105-shc-plnprf03.dgn	USER NAME : staffernk	DESIGNED - DAJ	REVISED -	<b>STATE OF ILLINOIS DEPARTMENT OF TRANSPORTATION</b>	<b>FAP RTE 781 (IL 33) PLAN AND PROFILE</b>		F.A.P. RTE. 781	SECTION 109B-1	COUNTY LAWRENCE	TOTAL SHEETS 34	SHEET NO. 9	
ESCA JOB NO. 933.13	DRAWN - HAS	CHECKED - ELH	REVISED -		SCALE: 1"=20'-0"	SHEET NO. 3 OF 3 SHEETS	STA. 708+50	TO STA. 712+00	CONTRACT NO. 74105			
PLOT SCALE : 0.18667 / 1 in.	CHECKED - ELH	REVISED -	REVISED -		FED. ROAD DIST. NO. ILLINOIS FED. AID PROJECT							
PLOT DATE : 6/2/2014 1:09:57 PM	DATE - 05/10	REVISED -	REVISED -									