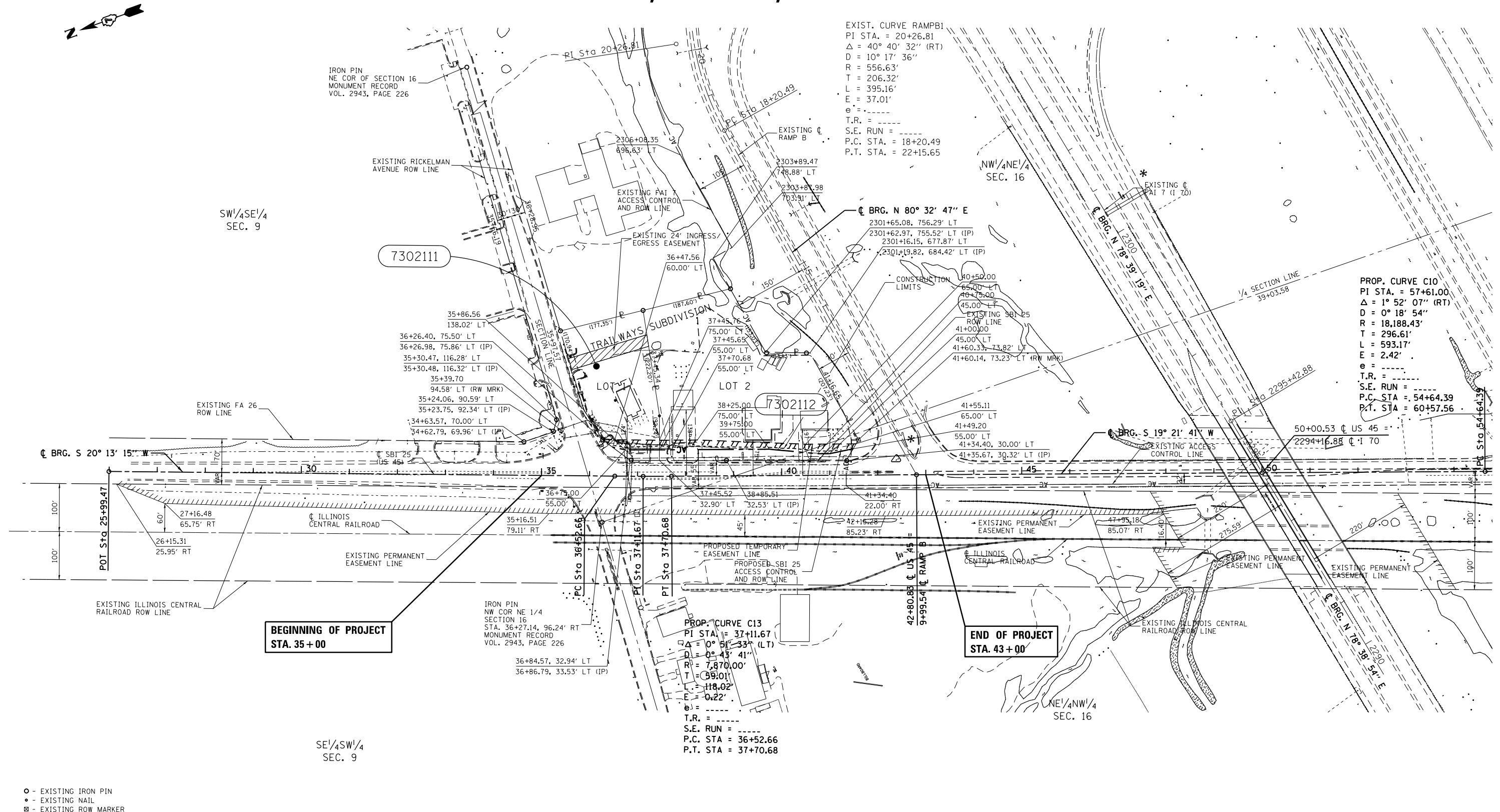


T.8N.-R.6E., 3rd P.M., DOUGLAS TWP.



EXIST. CURVE RAMP B1
 PI STA. = 20+26.81
 $\Delta = 40^\circ 40' 32''$ (RT)
 $D = 10^\circ 17' 36''$
 $R = 556.63'$
 $T = 206.32'$
 $L = 395.16'$
 $E = 37.01'$
 $e = \dots$
 T.R. = \dots
 S.E. RUN = \dots
 P.C. STA. = 18+20.49
 P.T. STA. = 22+15.65

PROP. CURVE C10
 PI STA. = 57+61.00
 $\Delta = 1^\circ 52' 07''$ (RT)
 $D = 0^\circ 18' 54''$
 $R = 18,188.43'$
 $T = 296.61'$
 $L = 593.17'$
 $E = 2.42'$
 $e = \dots$
 T.R. = \dots
 S.E. RUN = \dots
 P.C. STA. = 54+64.39
 P.T. STA. = 60+57.56

PROP. CURVE C13
 PI STA. = 37+11.67
 $\Delta = 0^\circ 51' 33''$ (LT)
 $D = 0^\circ 43' 41''$
 $R = 7,870.00'$
 $T = 39.01'$
 $L = 118.02'$
 $E = 0.22'$
 $e = \dots$
 T.R. = \dots
 S.E. RUN = \dots
 P.C. STA. = 36+52.66
 P.T. STA. = 37+70.68

**BEGINNING OF PROJECT
 STA. 35+00**

**END OF PROJECT
 STA. 43+00**

- - EXISTING IRON PIN
- - EXISTING NAIL
- - EXISTING ROW MARKER
- (R) RECORDED DISTANCE

NOTE:
 BEARINGS ARE REFERENCED TO THE ILLINOIS STATE PLANE COORDINATE SYSTEM EAST ZONE DATUM OF 1983(86)
 TEMPORARY EASEMENTS NEEDED FOR A WORK AREA

PARCEL	OWNER	AREA TAKEN		EASEMENT	AREA REM	INST	RECORDED			EXCESS	
		ADD	EXIST				MICRO FILM NO	DATE	BOOK	PAGE	AREA
7302111	ELVAN D. AND A. CAROLYN WALLACE	0.039 AC.	0.000 AC.	0.048 AC.	0.965 AC.						
7302112	RHODES DEVELOPMENT GROUP, LLC	0.191 AC.	0.000 AC.	0.160 AC.	2.315 AC.						