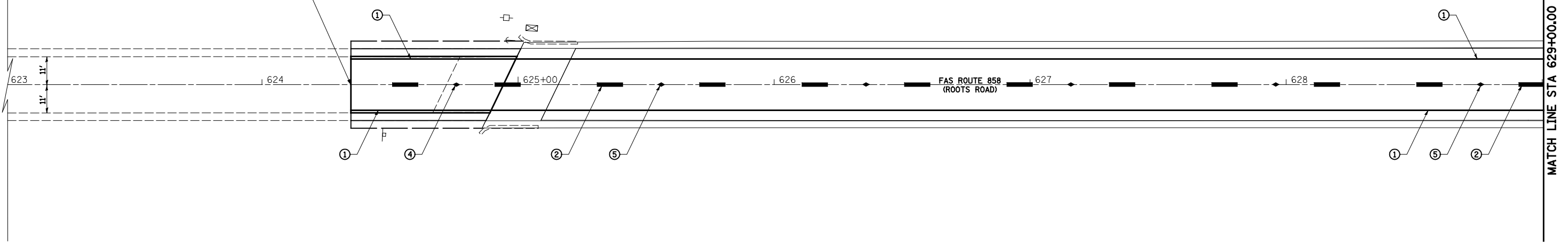
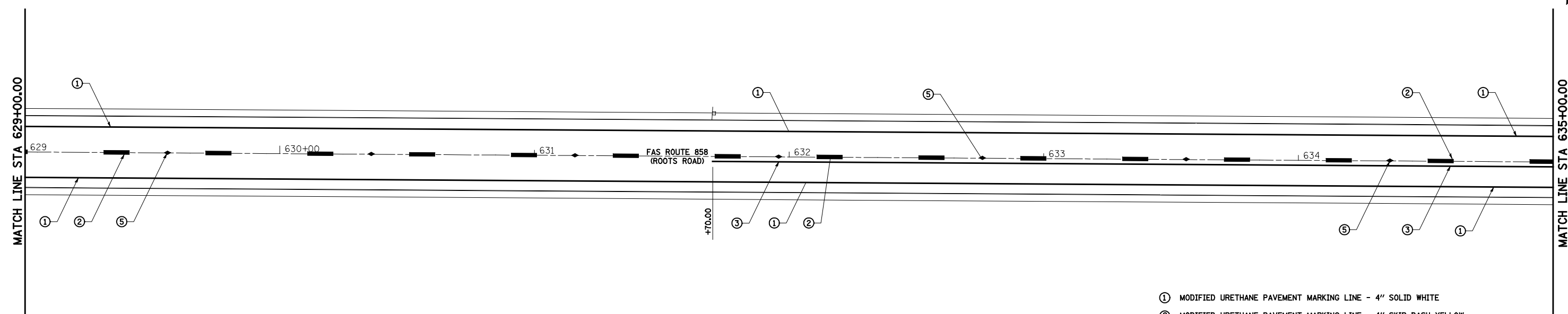


SECTION 12VB-1I
 BEGINS
 STA 624+34.70



MATCH LINE STA 629+00.00



MATCH LINE STA 635+00.00

- ① MODIFIED URETHANE PAVEMENT MARKING LINE - 4" SOLID WHITE
- ② MODIFIED URETHANE PAVEMENT MARKING LINE - 4" SKIP DASH YELLOW
- ③ MODIFIED URETHANE PAVEMENT MARKING LINE - 4" SOLID YELLOW
- ④ RAISED REFLECTIVE PAVEMENT MARKERS - AMBER, TWO-WAY
- ⑤ RAISED REFLECTIVE PAVEMENT MARKER (BRIDGE) - AMBER, TWO-WAY



FILE NAME =
 #FILEL#

USER NAME = john
 PLOT SCALE = 40.0000' / IN.
 PLOT DATE = 2/10/2014

DESIGNED - JWS
 DRAWN - WJS
 CHECKED - BRM
 DATE - 09-19-11

REVISED -
 REVISED -
 REVISED -
 REVISED -

**STATE OF ILLINOIS
 DEPARTMENT OF TRANSPORTATION**

PAVEMENT MARKING - FAS 858 (ROOTS ROAD)

SCALE: 1"=20' SHEET NO. 1 OF 2 SHEETS STA. 623+00.00 TO STA. 635+00.00

F.A.S. RTE. 858	SECTION 12VB-1I	COUNTY RANDOLPH	TOTAL SHEETS 72	SHEET NO. 23
CONTRACT NO. 76409			ILLINOIS FED. AID PROJECT	