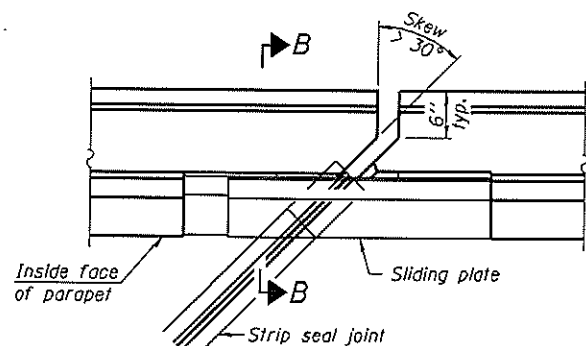
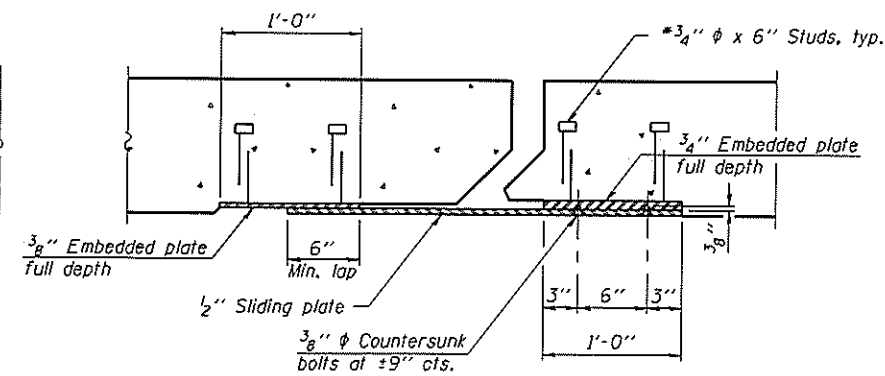


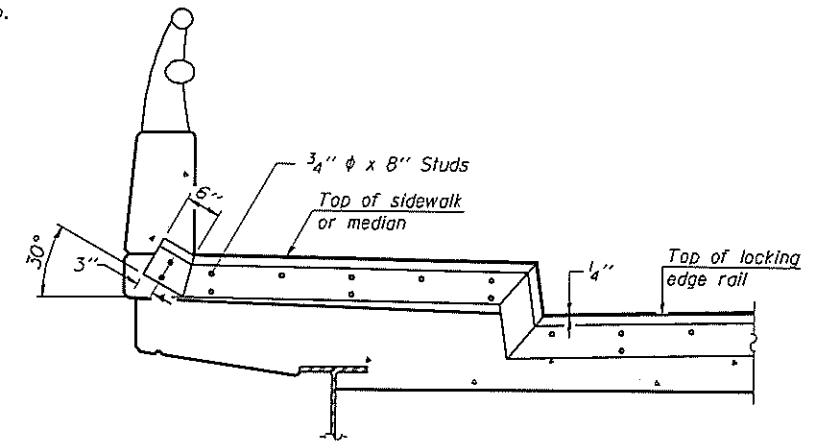
**PLAN**  
(For skews  $\leq 30^\circ$ )



**PLAN**  
(For skews  $> 30^\circ$ )  
Showing point block

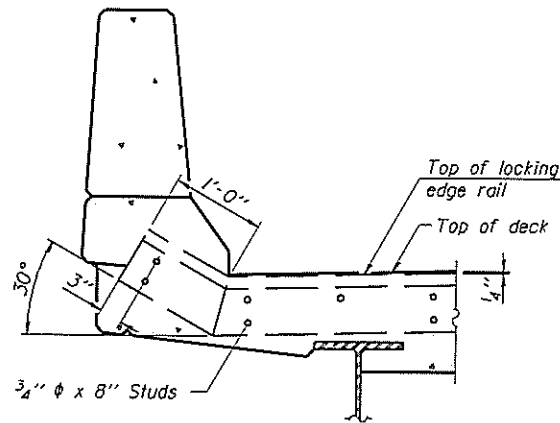


**SECTION C-C**

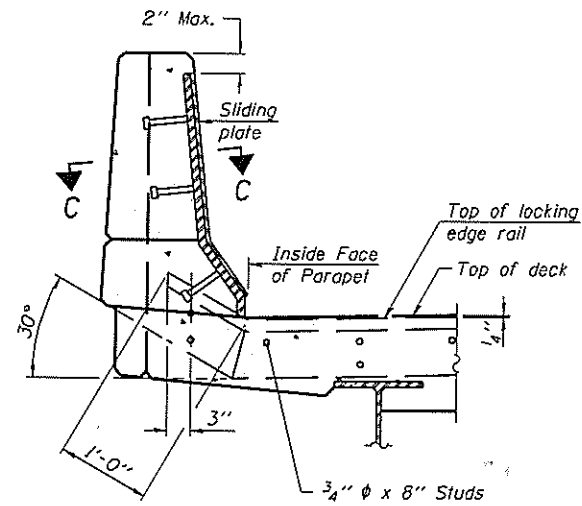


**TYPICAL END TREATMENT AT SIDEWALK OR MEDIAN**

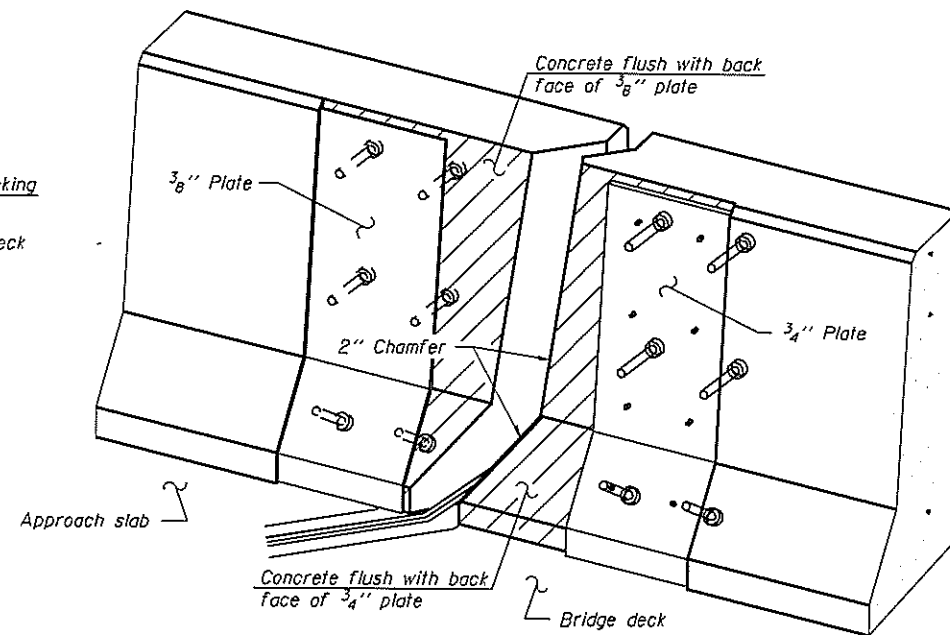
Shorter plates with a single row of studs at 12" cts. may be necessary on medians which are shallower than 9". See manufacturer's recommendation.



**SECTION A-A**



**SECTION B-B**



**TRIMETRIC VIEW**  
(Showing back plates only)

**Notes:**  
The strip seal shall be made continuous and shall have a minimum thickness of 1/4". The configuration of the strip seal shall match the configuration of the Locking Edge Rails. Open or "webbed" strip seal gland configurations are not permitted. The gland shall be sized for a maximum rated movement of 4 inches.

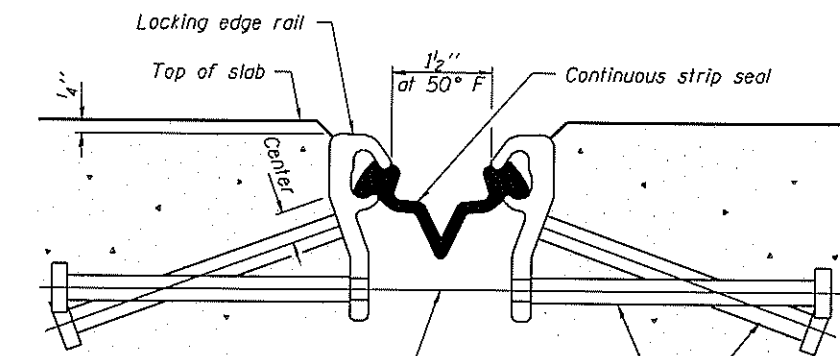
The Locking Edge Rails depicted are conceptual only, except for the minimum dimensions shown. The actual configuration of the Locking Edge Rails and matching strip seal may vary from manufacturer to manufacturer. Flanged edge rails will not be allowed. Locking Edge Rails may be spliced at slope discontinuities and stage construction joints. The inside of the Locking Edge Rail groove shall be free of weld residue.

The manufacturer's recommended installation methods shall be followed.

The joint opening and deck dimensions detailed on the superstructure are based on a rolled rail expansion joint. If the Contractor elects to use the welded rail expansion joint, the opening and deck dimensions shall be modified according to the dimensions detailed on this sheet. Required modifications shall be made at no additional cost to the State.

All steel components shall be galvanized after fabrication according to Article 520.03 of the Standard Specifications. Maximum space between rail segments shall be 3/16", sealed with a suitable sealant. Joints in rails within 10 ft. of curbs shall be welded.

Parapet plates and anchorage studs for skews  $> 30^\circ$  included in the cost of Preformed Joint Strip Seal.



**SECTION THRU STRIP SEAL JOINT**

7/16"  $\phi$  holes at 4'-0" cts. for 3/8"  $\phi$  bolts. All bolts shall be burned, sawed, or chipped off flush with the plates after forms are removed, typ.

Place 1/2"  $\phi$  x 6" granular or solid flux filled headed studs conforming to Article 1006.32 of the Std. Specs., automatically end welded at 1'-0" alt. cts.

**LOCKING EDGE RAIL**

**LOCKING EDGE RAIL SPLICE**

\* Omit weld at seal opening.

**BILL OF MATERIAL**

Item	Unit	Total
Preformed Joint Strip Seal	Foot	78

**EFK Moen, LLC**  
Civil Engineering Design  
303 Fountain Parkway, Suite 240  
Fairview Heights, IL 62208  
Phone 618-206-4250

USER NAME - cdl	DESIGNED - CTW	REVISIONS -
PLOT SCALE - 0:2 1/2" = 1' IN.	CHECKED - CDL	REVISIONS -
PLOT DATE - 5/9/2014	DRAWN - DP	REVISIONS -
	DATE - 5/9/2014	REVISIONS -

STATE OF ILLINOIS  
DEPARTMENT OF TRANSPORTATION

PREFORMED JOINT STRIP SEAL  
STRUCTURE NO. 079-0019

SHEET NO. 4 OF 13 SHEETS

F.A.S. RTE.	SECTION	COUNTY	TOTAL SHEETS	SHEET NO.
B58	12VB-11	RANDOLPH	72	37
				CONTRACT NO. 76409
ILLINOIS FED. AID PROJECT				

PRINT DATE: 5/9/2014 7:01:49 AM Z:\11813 BLD IDOT Reots Road\Bldge\Final\Plotsheets\107\0819-084-Strip Seal Details.dwg