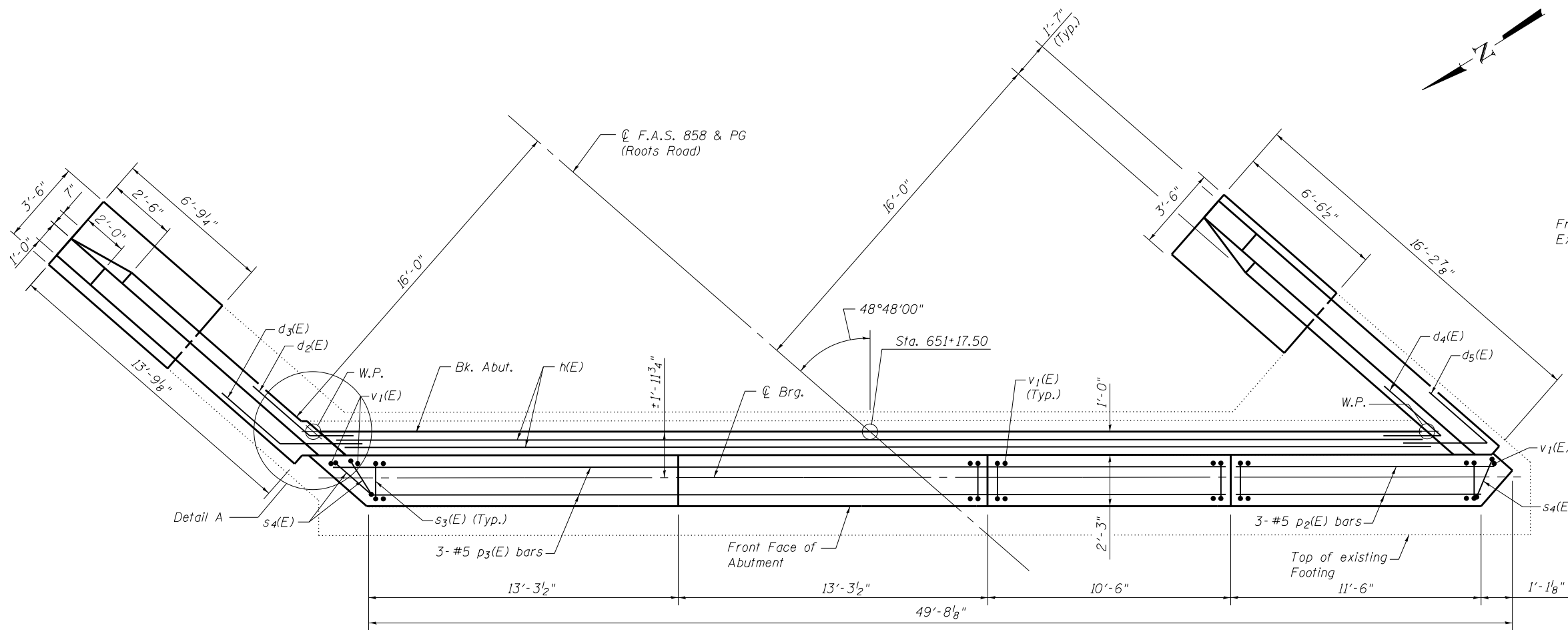
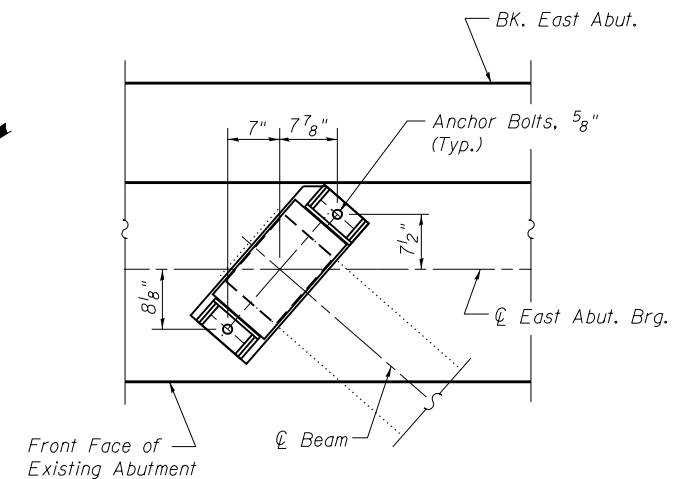


ELEVATION
(Looking East)

* Field drill and epoxy grout according to Article 584 of the Standard Specifications a min. 9" into existing cap. See Section thru Abutments.
** Spaced with $v_1(E)$ bars.



PLAN



**ANCHOR BOLT DETAIL
EAST ABUTMENT**

Notes:
Cut $p_2(E)$ and $p_3(E)$ bars to fit with 2" clear.
For Section A-A, Bar Bends and Bill of Material see sheet 20 of 26.
Hatched area quantity of concrete included with Concrete Superstructure.
Space reinforcement to miss Anchor Bolts.
Bars shall be drilled and grouted according to Section 584 of the Standard Specifications.
See sheet 19 of 26 for Wing Wall Details.
See sheet 16 of 26 for Detail A.

FILE NAME = 0790020-76409-018-E Abut Dtl.sgn USER NAME = ckatveit Illinois Design Firm Number 184,001670 PLOT SCALE = PLOT DATE = 1:38:20 PM 7/28/2014	DESIGNED - BB CHECKED - ACS DRAWN - WJS CHECKED - CJF	REVISED - REVISED - REVISED - REVISED -	STATE OF ILLINOIS DEPARTMENT OF TRANSPORTATION	EAST ABUTMENT STRUCTURE NO. 079-0020 SHEET NO. 18 OF 26 SHEETS	F.A.S. RTE. 858 SECTION 12VB-II COUNTY RANDOLPH TOTAL SHEETS 72 SHEET NO. 64 CONTRACT NO. 76409
					ILLINOIS FED. AID PROJECT