

STATE OF ILLINOIS
DEPARTMENT OF TRANSPORTATION
DIVISION OF HIGHWAYS

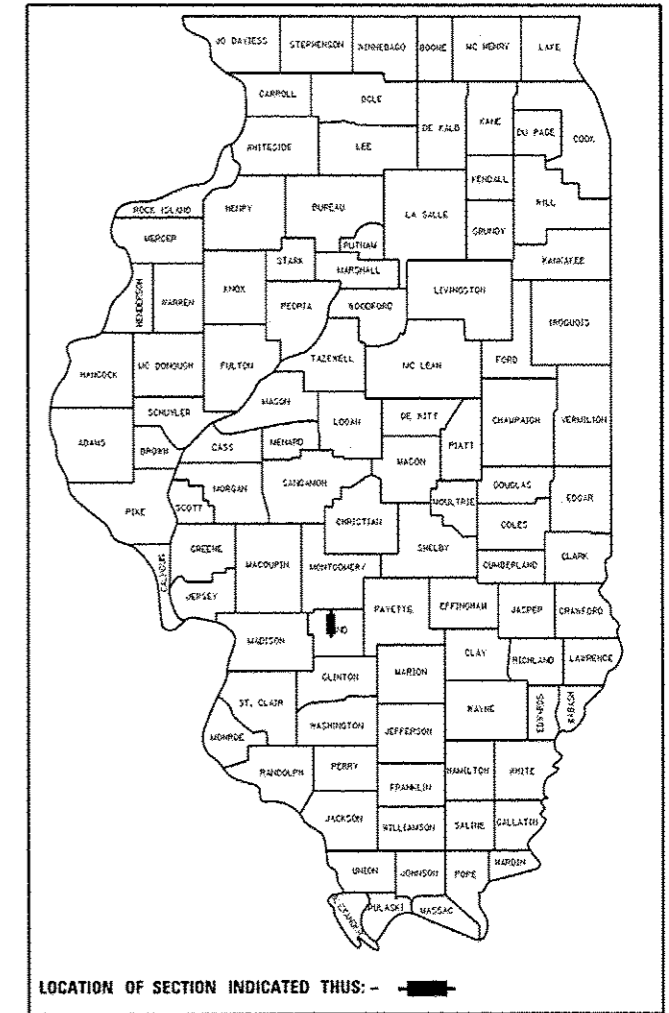
**PROPOSED
HIGHWAY PLANS**

FAP 42 (IL 127/140)
SECTION (139-1,36-1,110-1)RS-1
PROPOSED RESURFACING
BOND COUNTY

C-98-003-14

F.A.P. RTE.	SECTION	COUNTY	TOTAL SHEETS	SHEET NO.
42	(139-1,36-1,110-1)RS-1	BOND	68	1
ILLINOIS CONTRACT NO. 76G79				

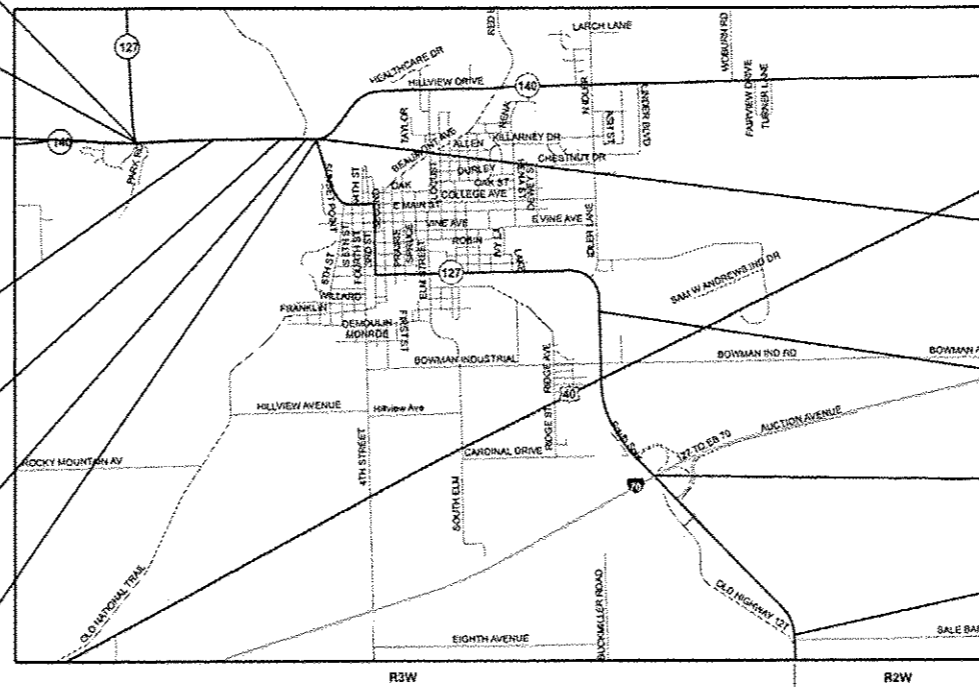
*68+1=69
D-98-005-14



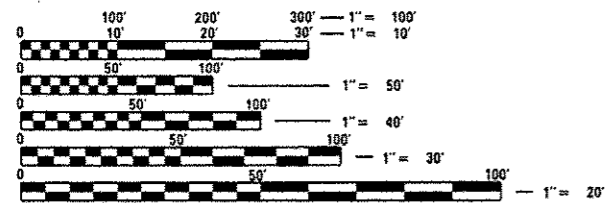
FOR INDEX OF SHEETS, SEE SHEET NO. 2

FOR AVERAGE DAILY TRAFFIC DATA, SEE SHEET NO. 3

- END RESURFACING
STA. 452 + 94.54
- BEGIN RESURFACING
STA. 450 + 22.54
- BEGIN PROJECT
BEGIN RESURFACING
STA. 500 + 28.00
LAT: + 38.89767
LONG: -89.43817
- BRIDGE OMISSION
STA. 527 + 12.37 TO
STA. 528 + 60.32
- BRIDGE OMISSION
STA. 539 + 48.48 TO
STA. 542 + 67.56
- BRIDGE OMISSION
STA. 550 + 65.59 TO
STA. 553 + 42.98
- BEGIN RESURFACING
STA. 53 + 67.16

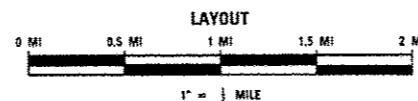


- END RESURFACING
STA. 555 + 18.72
- BRIDGE OMISSION
STA. 172 + 68.66 TO
STA. 174 + 14.63
- BRIDGE OMISSION
STA. 225 + 91.98 TO
STA. 228 + 91.11
- END PROJECT
END RESURFACING
STA. 289 + 29.19
LAT: + 38.85834
LONG: -89.37146



FULL SIZE PLANS HAVE BEEN PREPARED USING STANDARD ENGINEERING SCALES. REDUCED SIZED PLANS WILL NOT CONFORM TO STANDARD SCALES. IN MAKING MEASUREMENTS ON REDUCED PLANS, THE ABOVE SCALES MAY BE USED.

J.U.L.I.E.
JOINT UTILITY LOCATION INFORMATION FOR EXCAVATION
1-800-892-0123
OR 811



GROSS LENGTH = 29,325 FT. = 5.554 MILE
NET LENGTH = 28,135 FT. = 5.329 MILE

PROJECT ENGINEER: PATTI LEBEAU (618)346-3179
PROJECT MANAGER: BILLIE OWEN (618)346-3209

CONTRACT NO. 76G79

THE FOLLOWING PLAN PAGES PREPARED BY:

Bill Edward Tindall
BILL E TINDALL, P.E.
ILLINOIS REGISTERED ENGINEER NO. 062-095641
REGISTRATION EXPIRES NOV. 30, 2015



STATE OF ILLINOIS
DEPARTMENT OF TRANSPORTATION
DIVISION OF HIGHWAYS

SUBMITTED June 12 20 14
Jeffrey Y. Kan...
DEPUTY DIRECTOR OF HIGHWAYS, REGION 5 ENGINEER
July 18 20 14
John D. Baranzelli, P.E.
ENGINEER OF DESIGN AND ENVIRONMENT
July 18 20 14
Omer Osman, P.E.
DIRECTOR OF HIGHWAYS, CHIEF ENGINEER

PRINTED BY THE AUTHORITY
OF THE STATE OF ILLINOIS