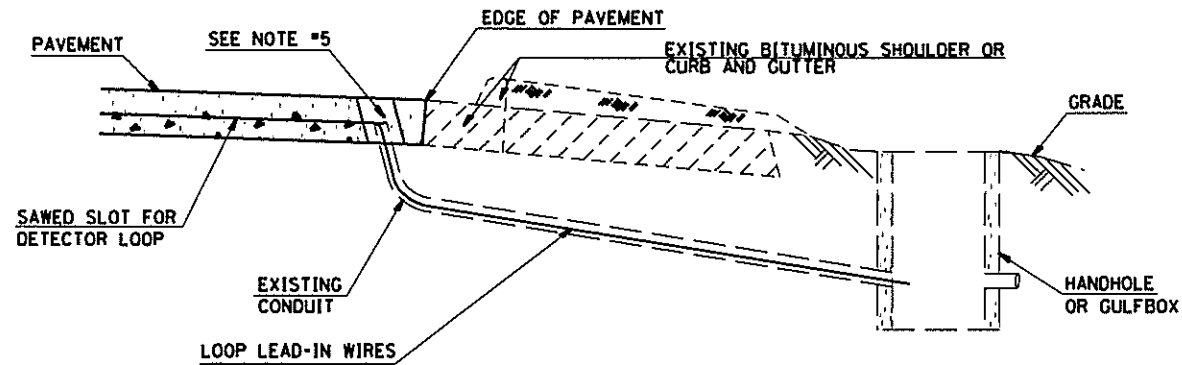


NOTES:

SEE TABLE "DETECTOR LOOP REQUIREMENTS AND CALCULATIONS" FOR LOOP SIZE AND CALCULATED NUMBER OF TURNS.

SEE "DETAIL A" FOR INSTALLING DETECTOR LOOP WIRES IN EXISTING CONDUITS.

SCHEDULE OF QUANTITIES			TOTAL QUANTITIES	IL 143	IL 002	IL 003
CODE NO	ITEM	UNIT				
110	LOCATING UNDERGROUND CABLE	FOOT	110	40	40	30
1344	DETECTOR LOOP REPLACEMENT	FOOT	1344	527	521	296



DETAIL A
(NO SCALE)

INSTALLING DETECTOR LOOP WIRES IN EXISTING CONDUIT

1. DRILL OUT PAVEMENT SEALANT AND CLEAN EXISTING CONDUIT.
2. REMOVE EXISTING DETECTOR LOOP WIRES TO HANDHOLE OR GULFBOX.
3. INSTALL NEW LOOP LEAD-IN WIRES IN EXISTING CONDUIT.
4. SPLICE NEW DETECTOR LOOP WIRES TO EXISTING LOOP LEAD-IN CABLE IN HANDHOLE OR GULFBOX.
5. FILL HOLE WITH APPROVED SEALER, PREVENT SEALER FROM ENTERING INTO CONDUIT.
6. LOCATING UNDERGROUND CABLE WILL BE PAID FOR SEPARATELY.

NOT A PAY ITEM, THE COST OF THIS WORK SHALL BE INCLUDED IN THE PAY ITEM "DETECTOR LOOP REPLACEMENT"

DETECTOR LOOP REPLACEMENT LEGEND

- ☐ EX. HANDHOLE
- EX. DETECTOR LOOP
- ⊠ EX. TRAFFIC SIGNAL CONTROLLER
- EXISTING CONDUIT
- ▬ PROPOSED DETECTOR LOOP

••FAP 789/FAP 2

FILE NAME * #FILE*	USER NAME * #USER*	DESIGNED - ___	REVISED - ___	STATE OF ILLINOIS DEPARTMENT OF TRANSPORTATION	DETECTOR LOOP REPLACEMENT PLAN GENERAL NOTES, SCHEDULE OF QUANTITIES, DETAIL AND LEGEND	F.A.P. DATE	SECTION	COUNTY	TOTAL SHEETS	SHEET NO.	
	PLOT SCALE * #SCALE*	DRAWN - ___	REVISED - ___				202RS-4, 406-IRS-1	MADISON	22	19	
	PLOT DATE * #DATE*	CHECKED - ___	REVISED - ___			SCALE: _____	SHEET NO. 1 OF 4 SHEETS	STA. _____ TO STA. _____	CONTRACT NO. 76HO-4		
		DATE - _____	REVISED - ___			ILLINOIS FED. AID PROJECT					