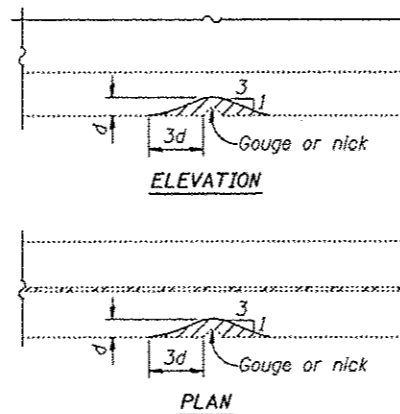


REPAIR ITEM 62

(L101W-U102W, looking west)
Use existing holes as a template for drilling holes in new angle. Cost of straightening member is included in the cost of Structural Steel Repair.

Impacted areas shall be straightened. See special provision Straighten Bent Members. Cost included with Straighten Bent Members. Typical for repair 62.



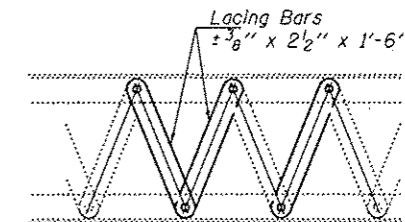
GRINDING DETAIL

REPAIR ITEMS 32 & 62

Grind existing nicks, gouges and shallow cracks in the damaged beams as detailed. Grinding shall be done parallel to the longitudinal axis of the member. Ground surfaces shall be inspected for cracks using dye penetrant or magnetic particle testing prior to initiating any beam straightening operations. Any cracks that cannot be removed by grinding approximately 1/4" deep shall be identified and reported to the Bureau of Bridges and Structures for further disposition. Ground surfaces shall be spot cleaned and painted with an aluminum epoxy mastic primer followed by a finish coat to match the color of the existing beam. Cost of grinding, testing and spot painting included with Structural Steel Repair.

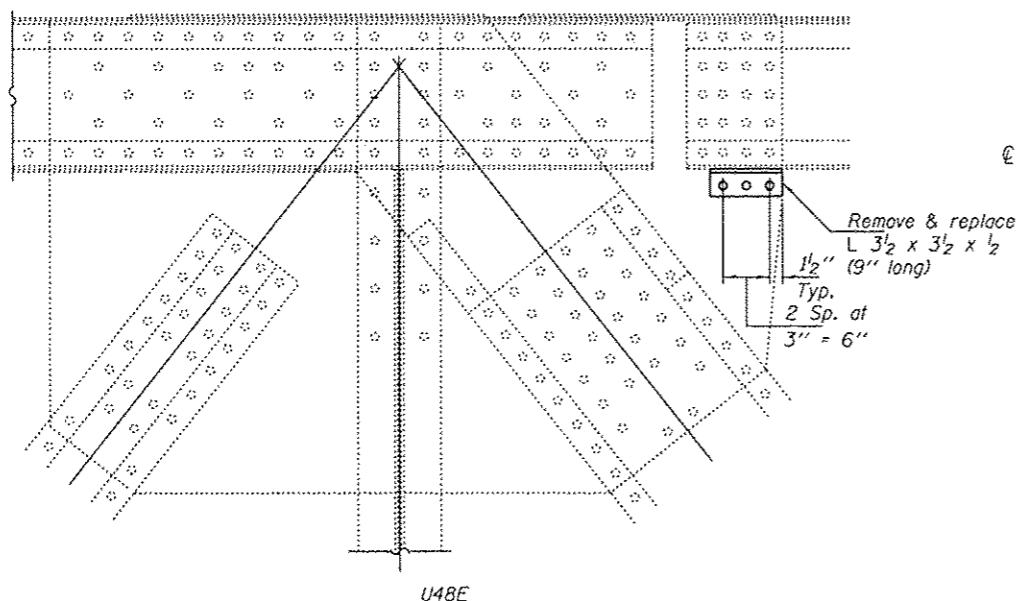
STRUCTURAL STEEL REPAIR				
Item #	Member	Location	Description	Action
32	Stringer A	FB 32, Panel 33	Crack	Grind
62	L102W-U101W	5' to 15' above deck	Damaged angle	Straighten, strengthen & grind
* 123	Gusset plate	Str. A at FB32, Panel 33	Cracked weld	Grind weld & seal

* See sheet 12 of 13 for details.



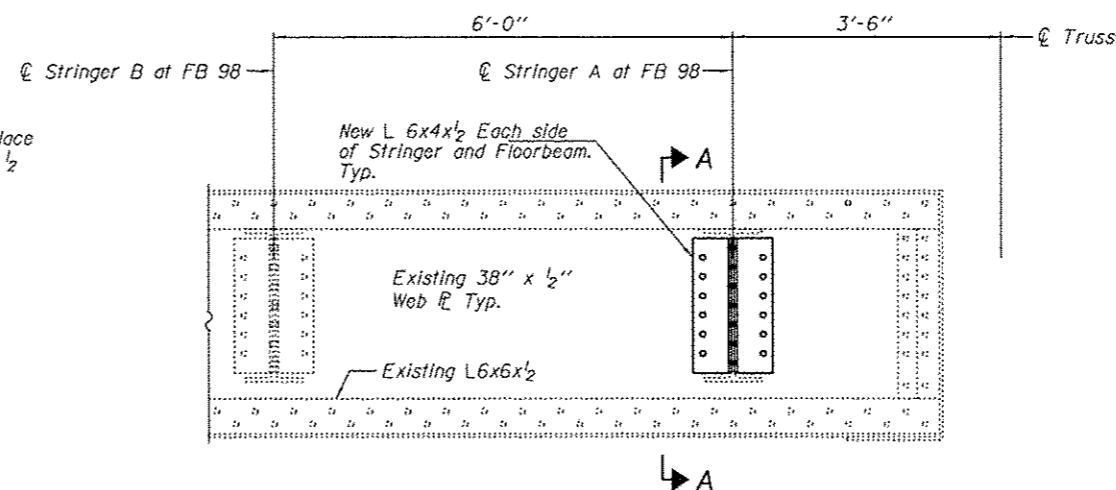
REPAIR ITEMS 357, 445 & 454

Exact locations to be verified in the field by the engineer



REPAIR ITEM 352

(Looking West)
Use existing holes as a template for drilling holes in new angle. Cost of straightening member is included in the cost of Structural Steel Repair.

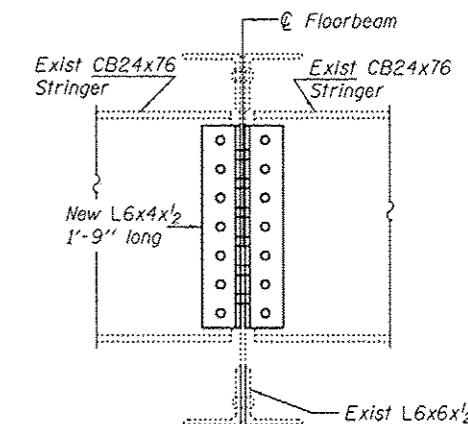


REPAIR ITEM 231

FLOOR BEAM 98

(Looking South)

- - Use holes in existing member as template
- - Use holes in new member as template



SECTION A-A

Temporary support of stringer end is required. See sheet B of 13 for details.

DESIGNED TLC
CHECKED ATH
DRAWN baliva
CHECKED TLC ATH

EXAMINED
PASSED
Timothy A. Anzani
ACTING ENGINEER OF STRUCTURAL SERVICES
A. Carl Prosser
ACTING ENGINEER OF BRIDGES AND STRUCTURES

DATE AUGUST 1, 2014
REVISED
REVISED

STATE OF ILLINOIS
DEPARTMENT OF TRANSPORTATION

REPAIR DETAILS
SN 002-0005

SHEET NO. 11 OF 13 SHEETS

F.A.S. RTE.	SECTION	COUNTY	TOTAL SHEETS	SHEET NO.
944	(1380-BR1)-7	ALEXANDER	17	15
CONTRACT NO. 78400				
ILLINOIS FED. AID PROJECT				