

STATE OF ILLINOIS
DEPARTMENT OF TRANSPORTATION
DIVISION OF HIGHWAYS

**PROPOSED
HIGHWAY PLANS**

FAP ROUTE 726 (IL 37)
SECTION 116RS-5,120RS-6

**3P RESURFACING
PULASKI COUNTY**

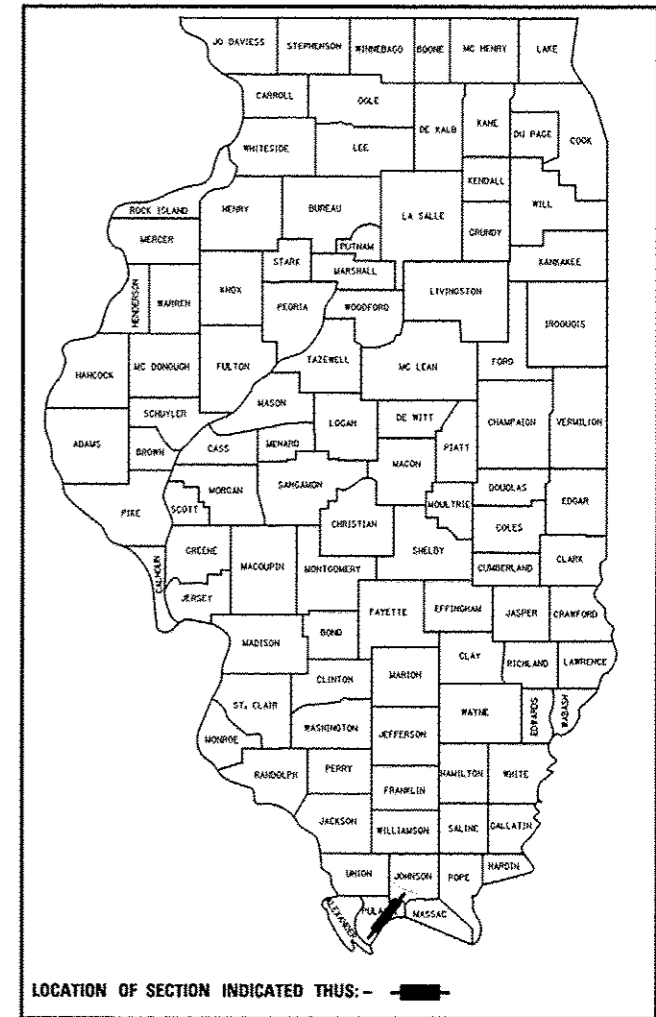
C-99-064-14

F.A.P. RTE.	SECTION	COUNTY	TOTAL SHEETS	SHEET NO.
726	116RS-5,120RS-6	PULASKI	17	1
		ILLINOIS	CONTRACT NO. 78435	

INDEX OF SHEETS

SHEET NO.	DESCRIPTION
1	COVER SHEET
2	SIGNATURES
3	LISTING OF HIGHWAY STANDARDS, GENERAL NOTES
4	MIXTURE REQUIREMENTS & STRUCTURE/MTD INFORMATION
5 - 7	SUMMARY OF QUANTITIES
8 - 10	TYPICAL SECTIONS
11 - 14	SCHEDULES OF QUANTITIES
15 - 17	DETAILS HIGHWAY STANDARDS

D-99-056-14



STATION EQUATIONS

EQ STA 680+53.80 @ BK = STA 680+68.30 @ AH
EQ STA 735+14.85 @ BK = STA 735+39.44 @ AH
EQ STA 795+42.00 @ BK = STA 1870+34.30 @ AH*
EQ STA 1770+07.00 @ BK = STA 1770+00.00 @ AH

* STATIONING REVERSES AT THIS LOCATION

TRAFFIC DATA

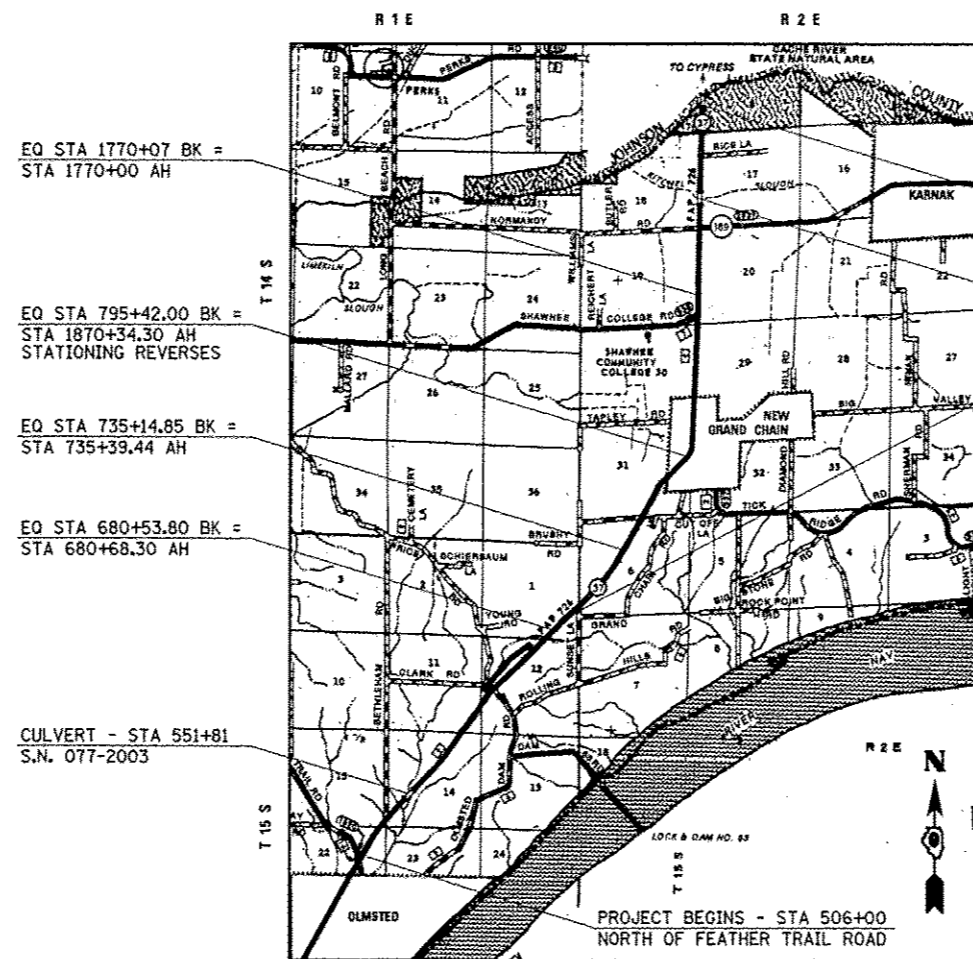
IL-37 TRAFFIC DATA

2015 ADT = 2,350 WITH 195 SU & 255 MU
2025 ADT = 2,625 WITH 220 SU & 285 MU

TOWNSHIPS

CYPRESS
KARNAK
OLMSTED

J.U.L.I.E.
JOINT UTILITY LOCATION INFORMATION FOR EXCAVATION
1-800-892-0123
OR 811



PROJECT ENDS - STA 1671+00
CACHE RIVER BRIDGE - SOUTH END

OMISSION - KITCHEL SLOUGH BRIDGE
STA 1724+56 TO STA 1723+75
S.N. 077-0021

OMISSION - NEW PCC PAVEMENT
STA 702+07 TO STA 702+72

STATE OF ILLINOIS
DEPARTMENT OF TRANSPORTATION
DIVISION OF HIGHWAYS

SUBMITTED July 1 20 14

Jeffrey L. Keim
DEPUTY DIRECTOR OF HIGHWAYS, REGION ENGINEER

Aug 15 20 14
John D. Baranzelli, PE
acting ENGINEER OF DESIGN AND ENVIRONMENT

Aug 15 20 14
Omer Osman, PE
DIRECTOR OF HIGHWAYS, CHIEF ENGINEER

PROJECT ENGINEER - SUSAN POE
PROJECT DESIGNER - HOWARD THOMAS

CONTRACT NO. 78435

GROSS LENGTH = 48,830.2 FT. = 9.248 MILE
NET LENGTH = 48,684.2 FT. = 9.220 MILE

APPROXIMATE SCALE

**PRINTED BY THE AUTHORITY
OF THE STATE OF ILLINOIS**