

09-19-14 LETTING ITEM 062

STATE OF ILLINOIS
DEPARTMENT OF TRANSPORTATION
DIVISION OF HIGHWAYS

PLANS FOR PROPOSED LOCAL AGENCY PROJECT

FAU 8557 (BOONE ST.)
RESURFACING
SECTION 13-00076-00-RS
PROJECT NO. M-5064(016)
CITY OF SALEM, ILLINOIS
MARION COUNTY
JOB NO. C-98-315-14
STU PROGRAM

F.A.U. ROUTE	SECTION	COUNTY	TOTAL SHEETS	SHEET NUMBER
8557	13-00076-00-RS	MARION	12	1
FEDERAL AID PROJECT		CONTRACT 97567		



INDEX OF SHEETS

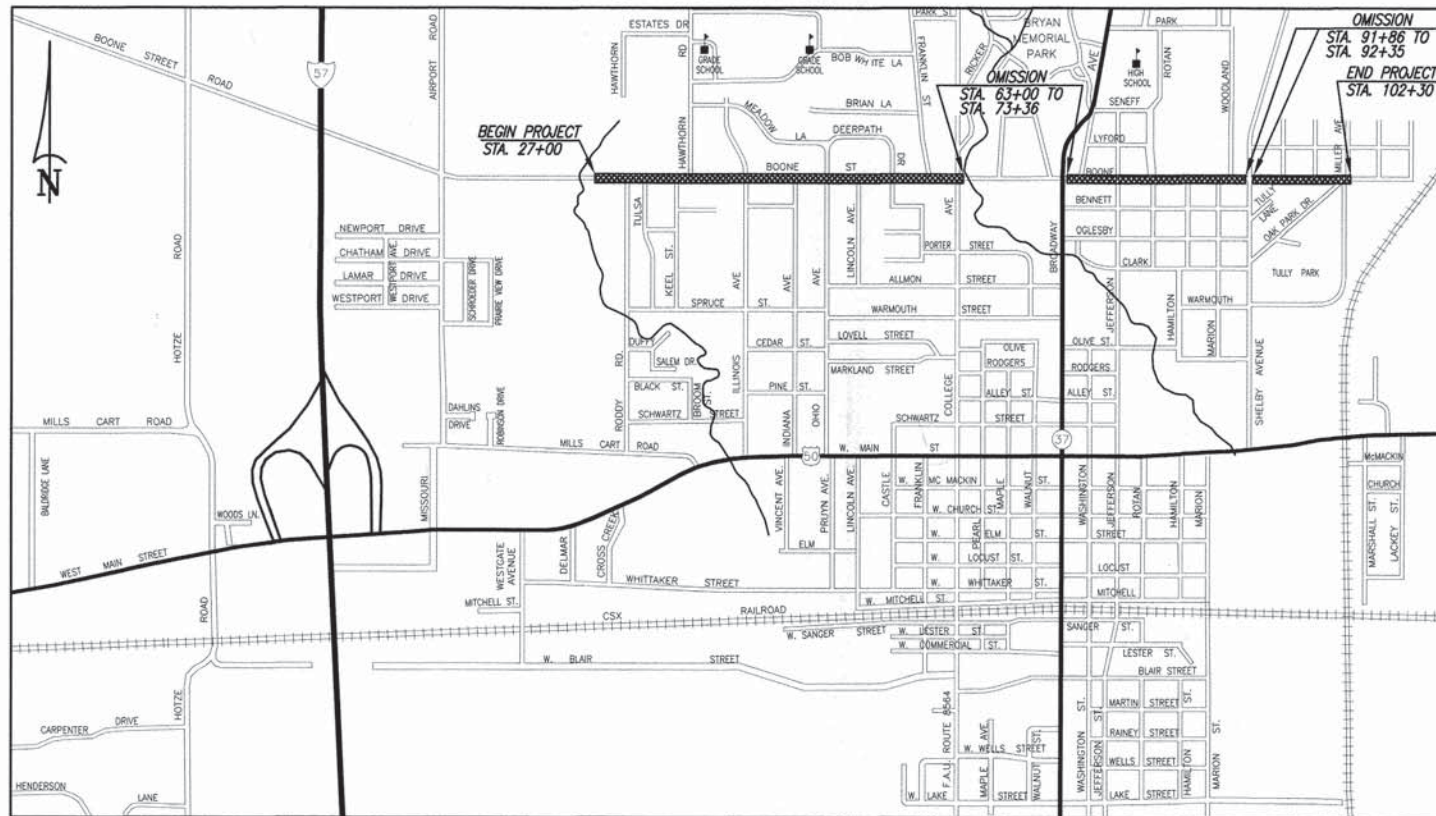
1. COVER SHEET
2. SUMMARY OF QUANTITIES, GENERAL NOTES, SCHEDULES, STANDARDS, & UTILITIES
3. TYPICAL SECTIONS
- 4.-5. MISCELLANEOUS DETAILS
6. SIDEWALK DETAILS
- 7.-12. ROADWAY PLAN SHEETS

SCALE:



BOONE STREET

ROADWAY DESIGNATION: MAJOR COLLECTOR
DESIGN SPEED: 25 M.P.H.
ADT: 3,000 (RODDY RD. TO COLLEGE AVE.)
1,700 (BROADWAY AVE. TO SHELBY AVE.)
375 (SHELBY AVE. TO MILLER AVE.)



LOCATION MAP
NOT TO SCALE

LENGTH OF PROJECT

BOONE STREET (RESURFACING) STA. 27+00 to STA. 63+00: 3,600 FT. = 0.682 MILES
STA. 73+36 to STA. 91+86: 1,850 FT. = 0.350 MILES
STA. 92+35 to STA. 102+30: 995 FT. = 0.188 MILES
TOTAL NET LENGTH = 6,445 FT. = 1.220 MILES

HOLD IT ! CALL BEFORE YOU DIG !
Phone J.U.L.I.E.



The owner would like to remind you that underground utility facilities can be damaged by shovel blades or other digging equipment. You can prevent damage or possible personal danger by phoning 800/892-0123 at least 48 hours before you dig. That's the toll-free number for "J.U.L.I.E.", which stands for Joint Utilities Location Information for Excavators.

If there are any pipes, cables, lines or mains in the excavation area, utility personnel will be out to mark the facilities so you can work around them.

Toll Free 800/892-0123

ILLINOIS DEPARTMENT OF TRANSPORTATION	
APPROVED	19 June 2014 DATE <i>Phil Raymer</i> MAYOR, CITY OF SALEM
PASSED	July 17, 2014 DATE <i>Mark A. Rujanvitz</i> DISTRICT EIGHT ENGINEER OF LOCAL ROADS & STREETS
RELEASING FOR BID BASED ON LIMITED REVIEW	July 17, 2014 DATE <i>Jeffrey A. Keeney</i> DEPUTY DIRECTOR OF HIGHWAYS, REGION FIVE ENGINEER
PRINTED BY AUTHORITY OF THE STATE OF ILLINOIS	



Mark A. Rujanvitz
Mark A. Rujanvitz
6/18/2014
Date of Signing
11/30/2015
Date of License Expiration

PREPARED BY:
RHUTASEL and ASSOCIATES, INC.
CONSULTING ENGINEERS • LAND SURVEYORS
CORPORATE OFFICE: 4 INDUSTRIAL DRIVE, FREEBURG, ILLINOIS 62243 (618) 532-3178
REGIONAL OFFICE: 201 SOUTH LOCUST STREET, CENTRALIA, ILLINOIS 62801 (618) 532-1992

F.A.U. ROUTE	SECTION	COUNTY	TOTAL SHEETS	SHEET NUMBER
8557	13-00076-00-RS	MARION	12	2
FEDERAL AID PROJECT		CONTRACT 97567		

SUMMARY OF QUANTITIES

CODE	PAY ITEM	UNIT	QUANTITY
40600635	LEVELING BINDER (MACHINE METHOD), N70	TON	839
40600982	HOT-MIX ASPHALT SURFACE REMOVAL - BUTT JOINT	SQ YD	269
40600985	PORTLAND CEMENT CONCRETE SURFACE REMOVAL - BUTT JOINT	SQ YD	158
40600990	TEMPORARY RAMP	SQ YD	60
40603315	HOT-MIX ASPHALT SURFACE COURSE, MIX "C", N70	TON	1,658
40600275	BITUMINOUS MATERIALS (PRIME COAT)	POUND	17,057
40800050	INCIDENTAL HOT-MIX ASPHALT SURFACING	TON	72
42400100	PORTLAND CEMENT CONCRETE SIDEWALK 4 INCH	SQ FT	880
42400800	DETECTABLE WARNINGS	SQ FT	87
44000155	HOT-MIX ASPHALT SURFACE REMOVAL, 1 1/2"	SQ YD	72
44000300	CURB REMOVAL	FT	47
44000600	SIDEWALK REMOVAL	SQ FT	744
44201313	CLASS C PATCHES, TYPE I, 7 INCH	SQ YD	25
44201317	CLASS C PATCHES, TYPE II, 7 INCH	SQ YD	34
44201321	CLASS C PATCHES, TYPE III, 7 INCH	SQ YD	16
44213204	TIE BARS 3/4"	EACH	2
45200100	JOINT OR CRACK ROUTING (PC CONCRETE PAVEMENT AND SHOULDER)	FOOT	5,840
45200300	JOINT OR CRACK FILLING	POUND	1,837
48102100	AGGREGATE WEDGE SHOULDER, TYPE B	TON	30
56109210	WATER VALVES TO BE ADJUSTED	EACH	9
60255500	MANHOLES TO BE ADJUSTED	EACH	15
60600605	CONCRETE CURB, TYPE B	FOOT	34
67100100	MOBILIZATION	L SUM	1
+78000400	THERMOPLASTIC PAVEMENT MARKING - LINE 6"	FOOT	295
+78000600	THERMOPLASTIC PAVEMENT MARKING - LINE 12"	FOOT	186
+78000650	THERMOPLASTIC PAVEMENT MARKING - LINE 24"	FOOT	15
X7010216	TRAFFIC CONTROL AND PROTECTION, (SPECIAL)	L SUM	1

*SPECIALITY ITEM

GENERAL NOTES

ALL CONSTRUCTION SHALL BE ACCORDING TO ILLINOIS DEPARTMENT OF TRANSPORTATION STANDARD SPECIFICATIONS FOR ROAD AND BRIDGE CONSTRUCTION, ADOPTED JANUARY 1, 2012.

THE THICKNESS OF THE HOT-MIX ASPHALT SHOWN ON THE PLANS IS THE NOMINAL THICKNESS. DEVIATIONS FROM THE NOMINAL THICKNESS WILL BE PERMITTED WHEN SUCH DEVIATIONS OCCUR DUE TO IRREGULARITIES IN THE EXISTING SURFACE ON WHICH THE HOT-MIX ASPHALT IS PLACED.

FACTORS USED FOR QUANTITY CALCULATIONS ARE AS FOLLOWS:
PAVING

ALL HOT-MIX ASPHALT 0.056 TONS/SQ.YD./INCH
BITUMINOUS MATERIALS (PRIME COAT) 0.05 LBS/SQ.FT. (HMA, PCC); 0.25 LBS/SQ.FT. (AGG.)
0.025 LBS/SQ.FT. (FOG COAT BETWEEN HMA LIFTS)
JOINT OR CRACK FILLING 0.284 LBS/FOOT/3/4" CRACK

THE CONTRACTOR SHALL TAPER HOT-MIX ASPHALT PLACEMENT AT THE CURB FACE IN A MANNER THAT ALLOWS UNRESTRICTED DISCHARGE AT ANY CURB OUTLET WITHIN THE PROJECT LIMITS.

CRACK FILLING SHALL BE UTILIZED AT RANDOM CRACK LOCATIONS AND AT SELECT LATERAL AND LONGITUDINAL JOINTS AS DIRECTED BY THE ENGINEER IN THE SECTION BETWEEN THE WEST TERMINUS AND COLLEGE AVENUE.

EXCEPT FOR THE COLLEGE AVENUE AND BROADWAY INTERSECTIONS, THE CONTRACTOR AND ENGINEER SHALL BE AWARE THAT NO SURVEY WAS PERFORMED ON THIS PROJECT. THE STATIONING AND TOPO SHOWN IN THE PLANS WAS CREATED USING MEASUREMENTS MADE BY DESIGN PERSONNEL AND SHALL BE ASSUMED TO BE APPROXIMATE.

ALL AREAS DISTURBED FOR ANY REASON SHALL BE SEEDED WITH CLASS 1 SEEDING. NUTRIENTS SHALL CONFORM TO ARTICLE 250.04. THE COST OF SEEDING AND FERTILIZER (AS DETERMINED BY THE ENGINEER) SHALL BE INCLUDED IN THE COST OF THE CONTRACT.

ALL SAW CUTS TO BE CONSIDERED INCLUDED IN THE COST OF THE ITEM OF REMOVAL AND NO ADDITIONAL COMPENSATION WILL BE ALLOWED.

COMMITMENTS

- THE CITY OF SALEM WILL INCLUDE CROSSWALK MARKINGS AT THE BROADWAY AND SHELBY AVENUE INTERSECTIONS IN THE 2014 BOONE STREET RESURFACING CONTRACT.

PAVEMENT PATCHING SCHEDULE

STATION	LEFT	RIGHT	LENGTH	WIDTH	CLASS C PATCHES, 7 INCH		
					TYPE I	TYPE II	TYPE III
					SQ YD	SQ YD	SQ YD
STA. 29+46		X	12.0	12.0			16.0
STA. 31+05*		X	3.0	1.0	0.4		
STA. 32+90	X		6.0	6.0	4.0		
STA. 38+17		X	4.0	4.0	1.8		
STA. 39+82		X	3.0	3.0	1.0		
STA. 43+15		X	8.0	4.0	3.6		
STA. 43+42	X		8.0	3.0	2.7		
STA. 51+32		X	3.0	4.0	1.3		
STA. 51+88		X	19.0	7.0		14.8	
STA. 52+28		X	4.0	4.0	1.8		
STA. 52+48		X	20.0	5.0		11.1	
STA. 78+45		X	9.0	8.0		8.0	
STA. 83+22		X	7.5	4.0	3.3		
STA. 83+29		X	10.0	4.0	3.3		
TOTAL					24.3	33.9	16.0

*NOTE: TO BE POURED AROUND INLET (SEE DETAIL SHEET 5)

ADJUSTMENT SCHEDULE

STATION	WATER VALVES TO BE ADJUSTED	MANHOLE TO BE ADJUSTED
	EACH	EACH
27+00 to 63+00	5	5
73+36 to 91+86	4	7
92+35 to 102+30		3
TOTAL	9	15

PAVEMENT SCHEDULE

STATION	HMA SURFACE COURSE, MIX "C", N70	BITUMINOUS MATERIALS (PRIME COAT)	LEVELING BINDER (MACHINE METHOD) N70	INCIDENTAL HOT-MIX SURFACING	HMA SURFACE REMOVAL-BUTT JOINT	FCC SURFACE REMOVAL-BUTT JOINT	HMA SURFACE REMOVAL 1 1/2"	AGGREGATE WEDGE SHOULDER, TYPE B	JOINT OR CRACK ROUTING (PC CONCRETE PAVEMENT & SHOULDER)	JOINT OR CRACK FILLING
	TON	POUND	TON	TON	SQ YD	SQ YD	SQ YD	TON	FOOT	POUND
27+00 to 63+00	913	6,885	483	50.3	198*	97	72		5,840	1,837
73+36 to 91+86	548	3,861	268		34	61				
92+35 to 102+30	197	6,311	88	21.1	37			30		
TOTAL	1,658	17,057	839	71.4	269	158	72	30	5,840	1,837

*NOTE: BUTT JOINTS IN OIL AND CHIP PAVEMENT WILL BE PAID FOR AS HMA SURFACE REMOVAL - BUTT JOINTS

SIDEWALK SCHEDULE

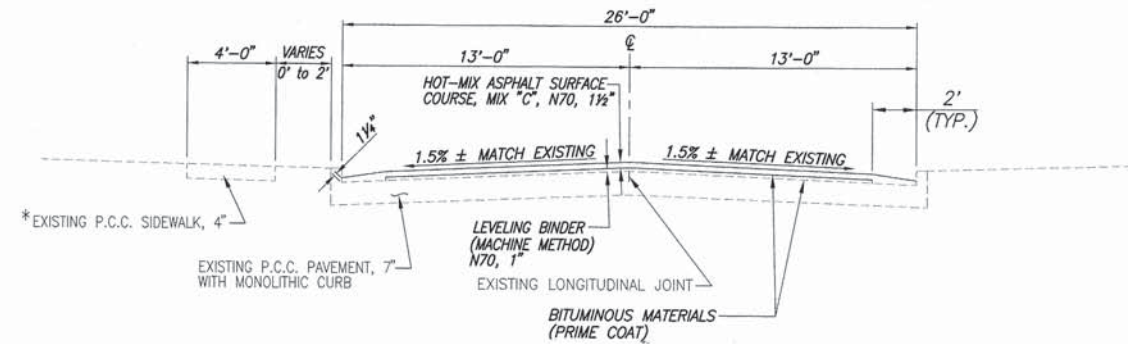
LOCATION	P.C.C. SIDEWALK 4"	DETECTABLE WARNINGS	SIDEWALK REMOVAL	CURB REMOVAL	CONCRETE CURB TY B
	SQ. FT.	SQ. FT.	SQ. FT.	FT.	FT.
W. BOONE ST./COLLEGE AVE.					
N.W. CORNER	51	14	40		
S.W. CORNER	114	8	78	18	18
E. BOONE ST. / BROADWAY					
N.E. CORNER	257	24	220		
S.E. CORNER	200	24	200		
E. BOONE ST. / MARION AVE.					
S.W. CORNER	132	9	100	12	5
S.E. CORNER	126	8	106	17	11
TOTAL	880	87	744	47	34

APPLICABLE IDOT HIGHWAY STANDARDS

- | | |
|-----------|-----------|
| 424001-07 | 701501-06 |
| 424021-02 | 701801-05 |
| 442201-03 | 701901-03 |
| 606001-05 | |

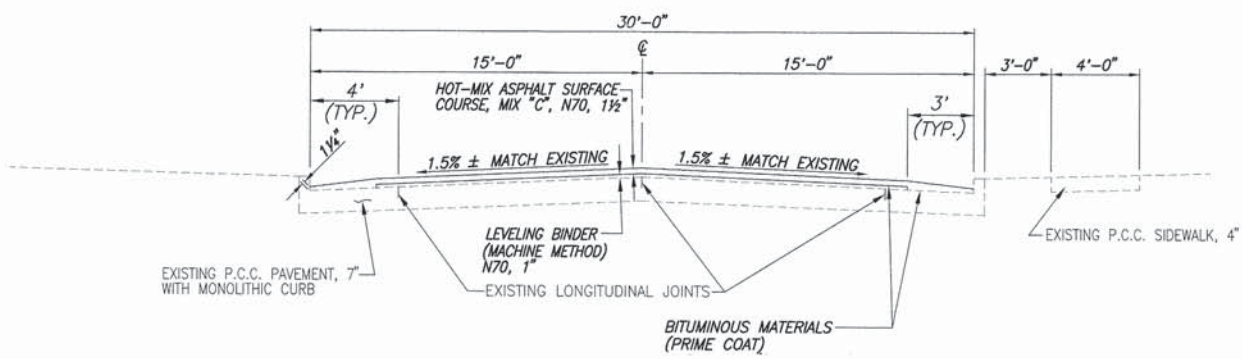
UTILITY TYPE	NAME OF UTILITY	PHONE NUMBER
ELECTRIC	AMEREN IP, MT. VERNON, ILLINOIS	618-244-8271
GAS	CITY OF SALEM, SALEM, ILLINOIS	618-548-2222
WATER	CITY OF SALEM, SALEM, ILLINOIS	618-548-2222
TELEPHONE	AT&T, CENTRALIA, ILLINOIS	618-533-3418
CABLE	USSONET, SALEM, ILLINOIS	618-548-6909
SANITARY SEWER	CITY OF SALEM, SALEM, ILLINOIS	618-548-2222
STORM SEWER	CITY OF SALEM, SALEM, ILLINOIS	618-548-2222

F.A.U. ROUTE	SECTION	COUNTY	TOTAL SHEETS	SHEET NUMBER
8557	13-00076-00-RS	MARION	12	3
FEDERAL AID PROJECT		CONTRACT 97567		

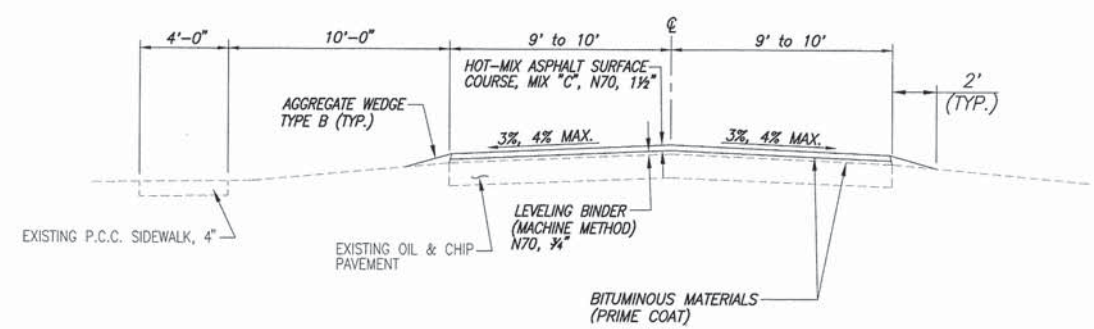


* EXISTING P.C.C. SIDEWALK, 4'

BOONE STREET
STA. 27+00 TO STA. 63+00
 Scale: 1"=4' (Horizontal)
 1"=2' (Vertical)

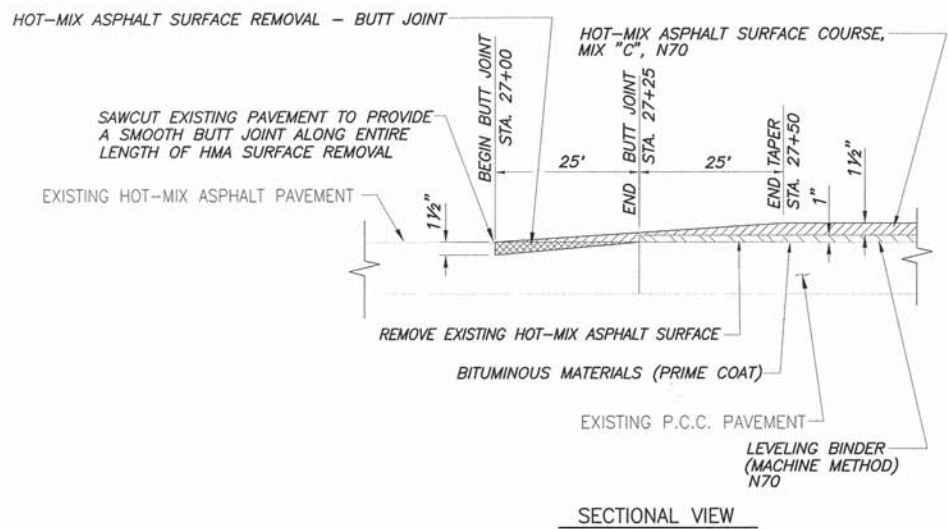


BOONE STREET
STA. 73+36 TO STA. 91+86
 Scale: 1"=4' (Horizontal)
 1"=2' (Vertical)

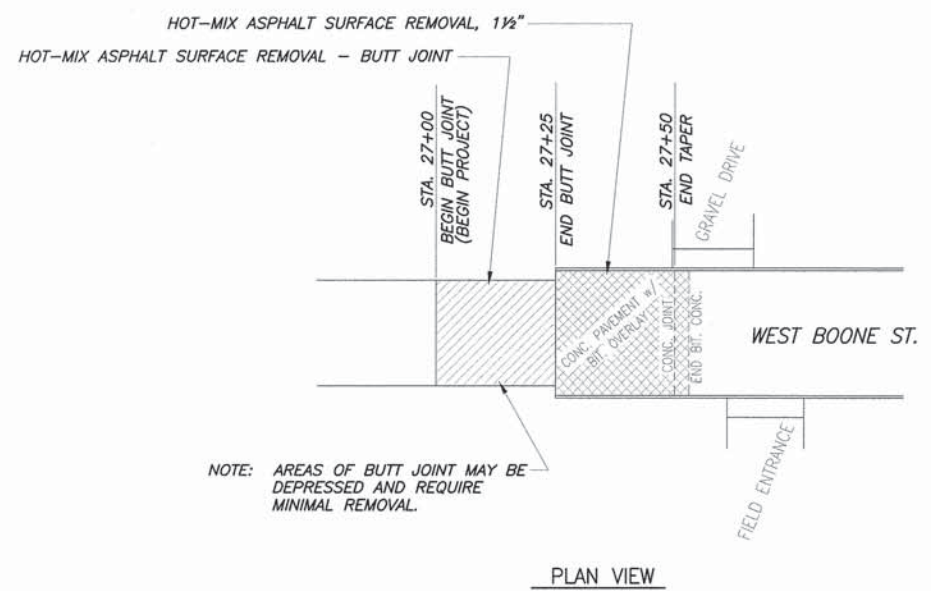


BOONE STREET
STA. 92+35 TO STA. 102+30
 Scale: 1"=4' (Horizontal)
 1"=2' (Vertical)

F.A.U. ROUTE	SECTION	COUNTY	TOTAL SHEETS	SHEET NUMBER
8557	13-00076-00-RS	MARION	12	4
FEDERAL AID PROJECT			CONTRACT 97567	



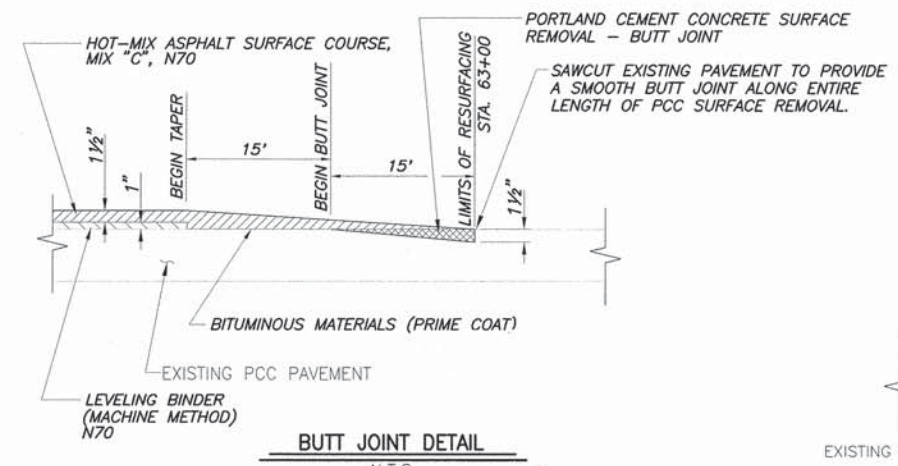
SECTIONAL VIEW



PLAN VIEW

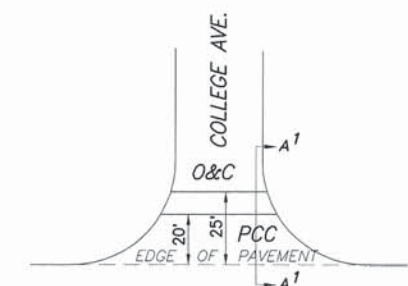
BUTT JOINT DETAIL

N.T.S.
WEST BOONE ST. (STATION 27+00: BEGINNING OF PROJECT)

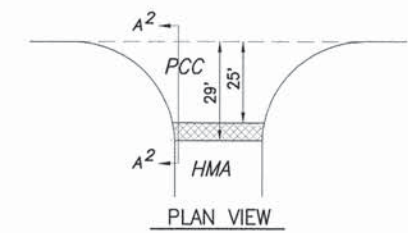


BUTT JOINT DETAIL

N.T.S.
COLLEGE AVE.



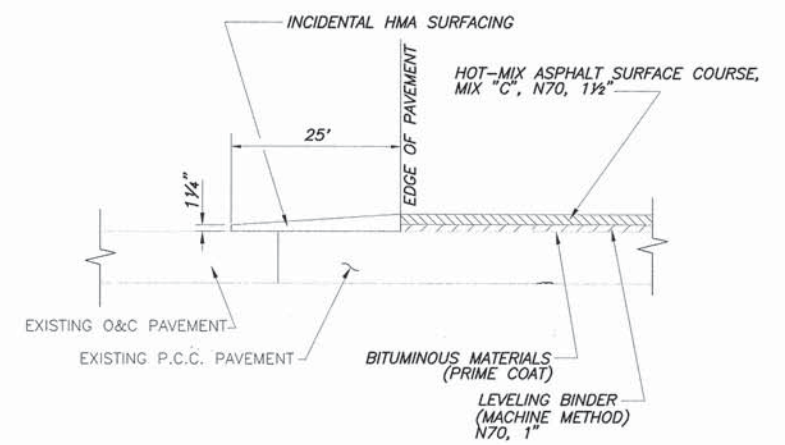
WEST BOONE ST.



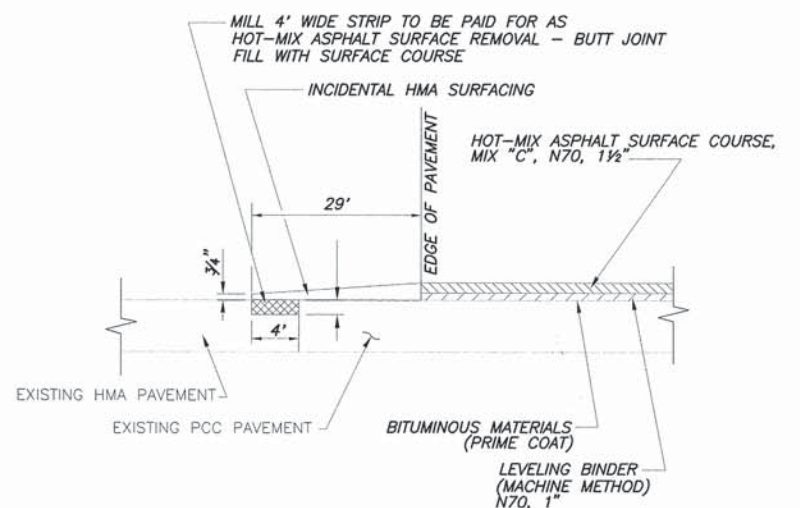
PLAN VIEW

FEATHEREDGE DETAIL

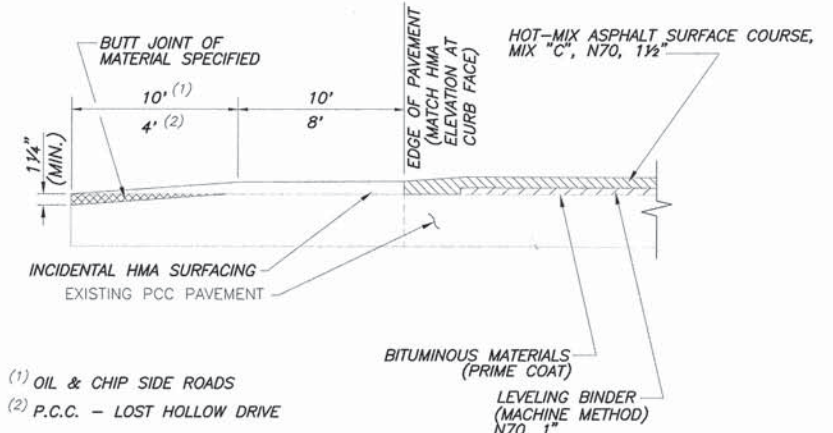
N.T.S.
WEST BOONE ST. / COLLEGE AVE. INTERSECTION



SECTIONAL VIEW A¹ - A¹



SECTIONAL VIEW A² - A²

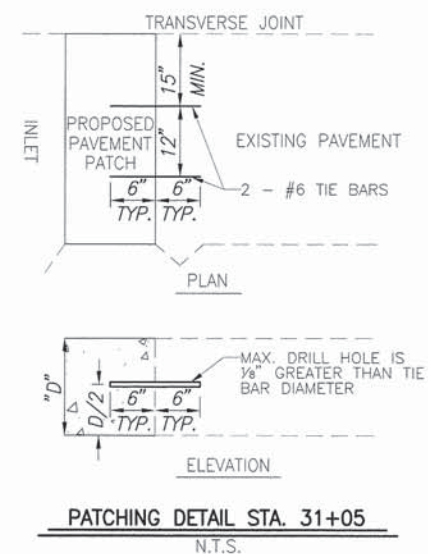
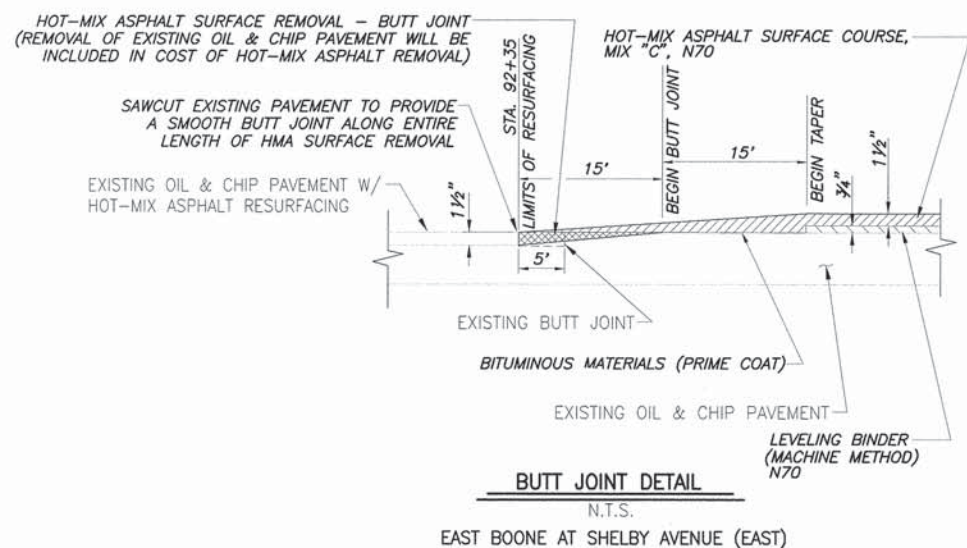
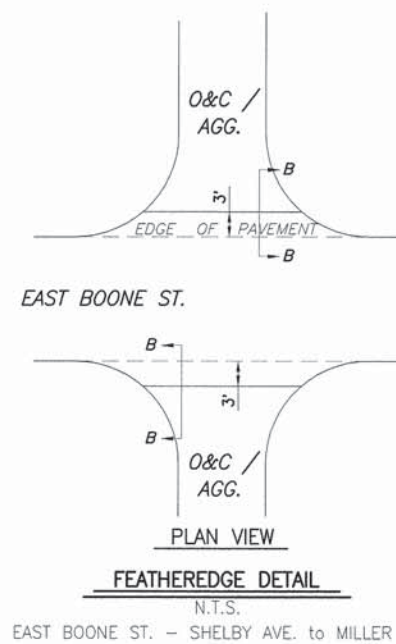
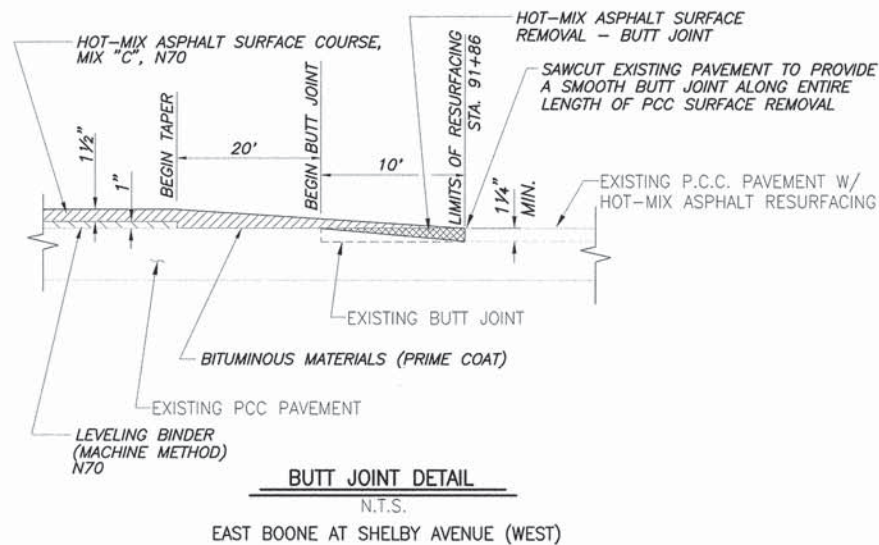
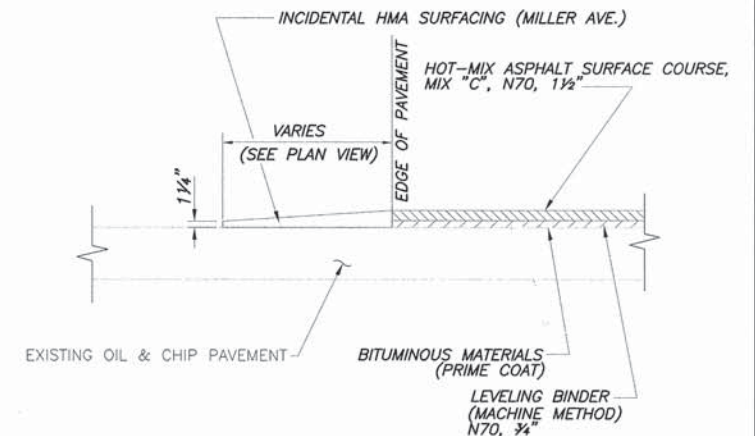
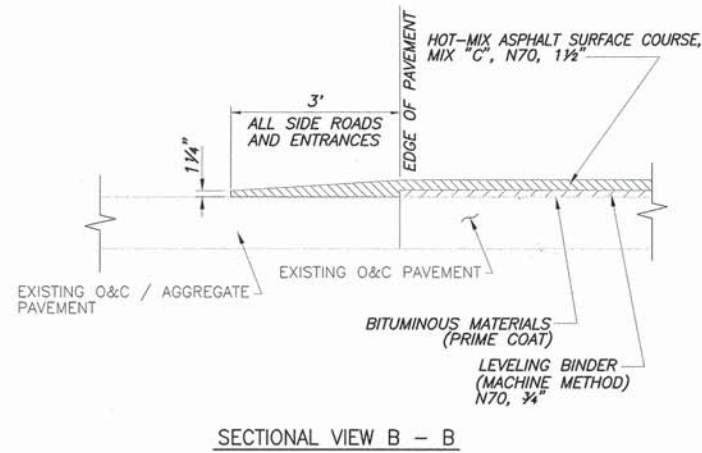
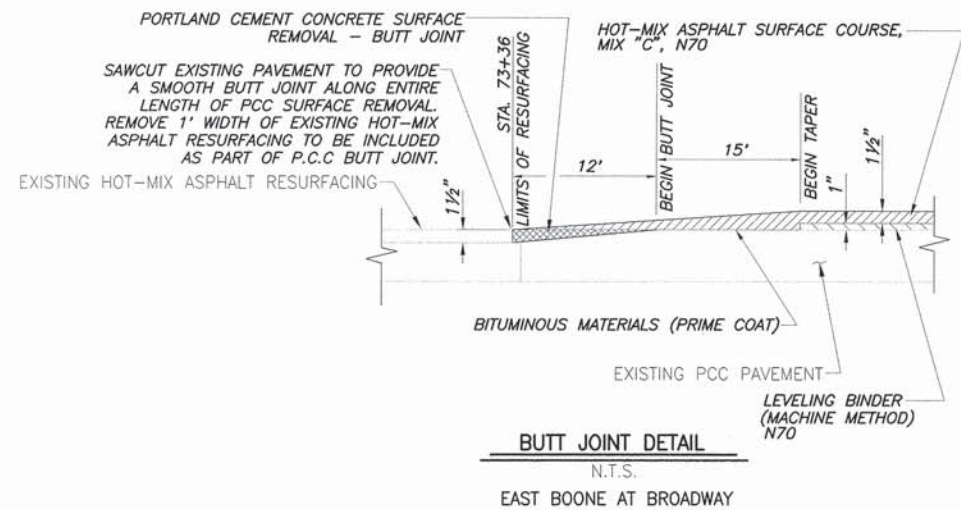


BUTT JOINT DETAIL

- (1) OIL & CHIP SIDE ROADS
- (2) P.C.C. - LOST HOLLOW DRIVE

VARIOUS SIDE ROADS (SOUTH)

F.A.U. ROUTE	SECTION	COUNTY	TOTAL SHEETS	SHEET NUMBER
8557	13-00076-00-RS	MARION	12	5
FEDERAL AID PROJECT		CONTRACT 97567		



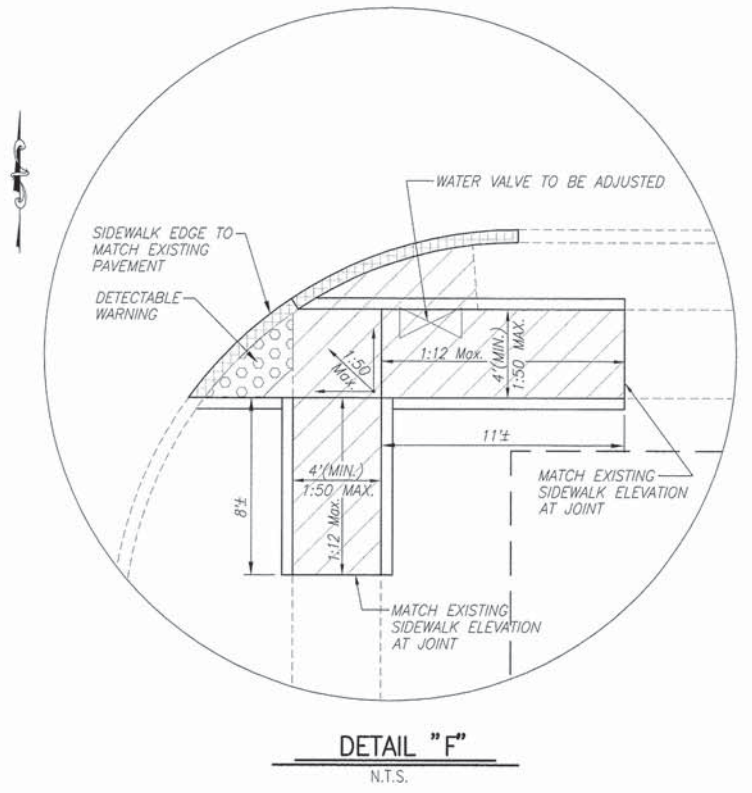
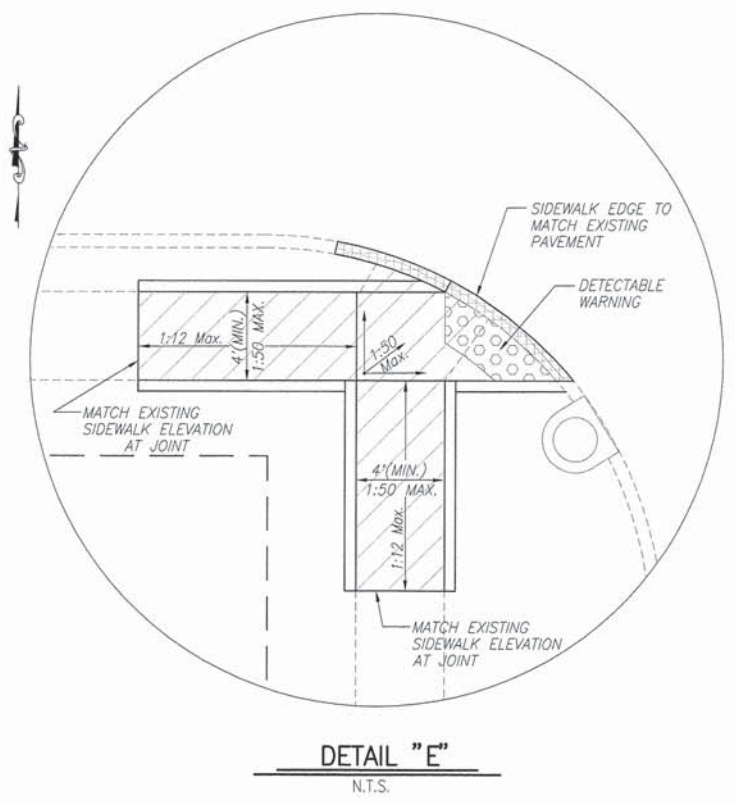
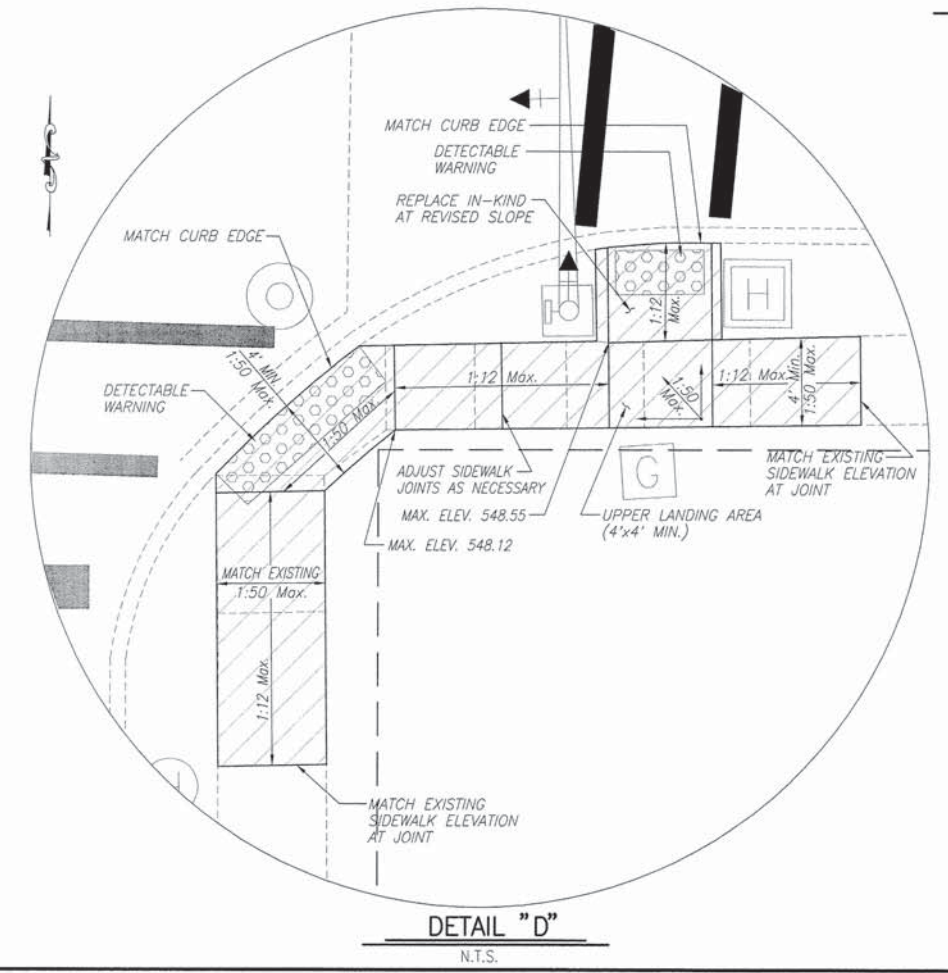
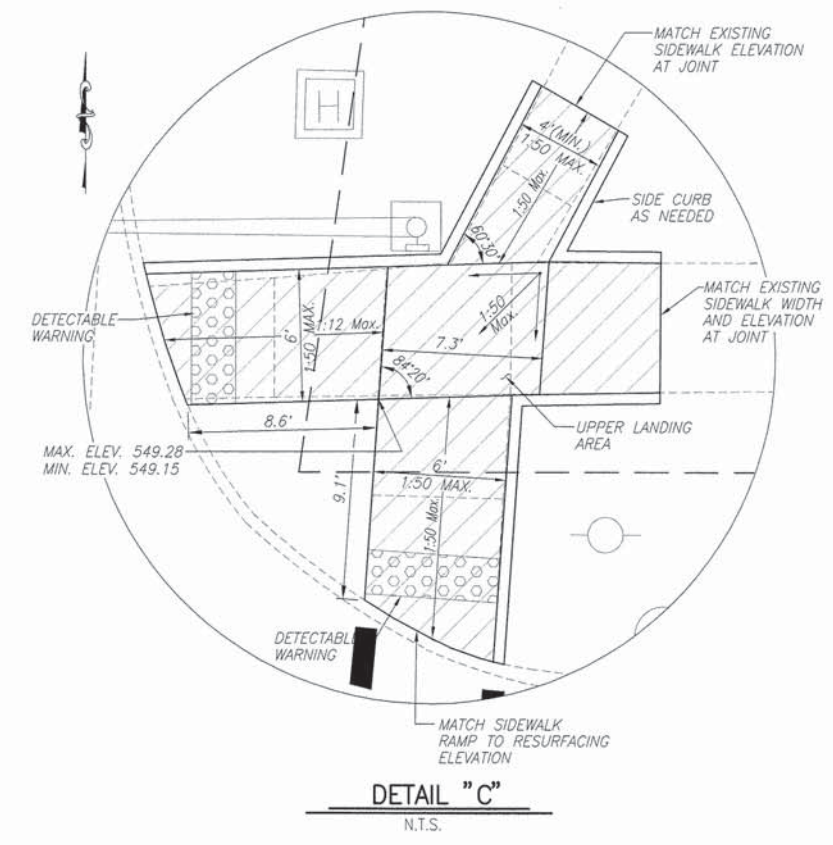
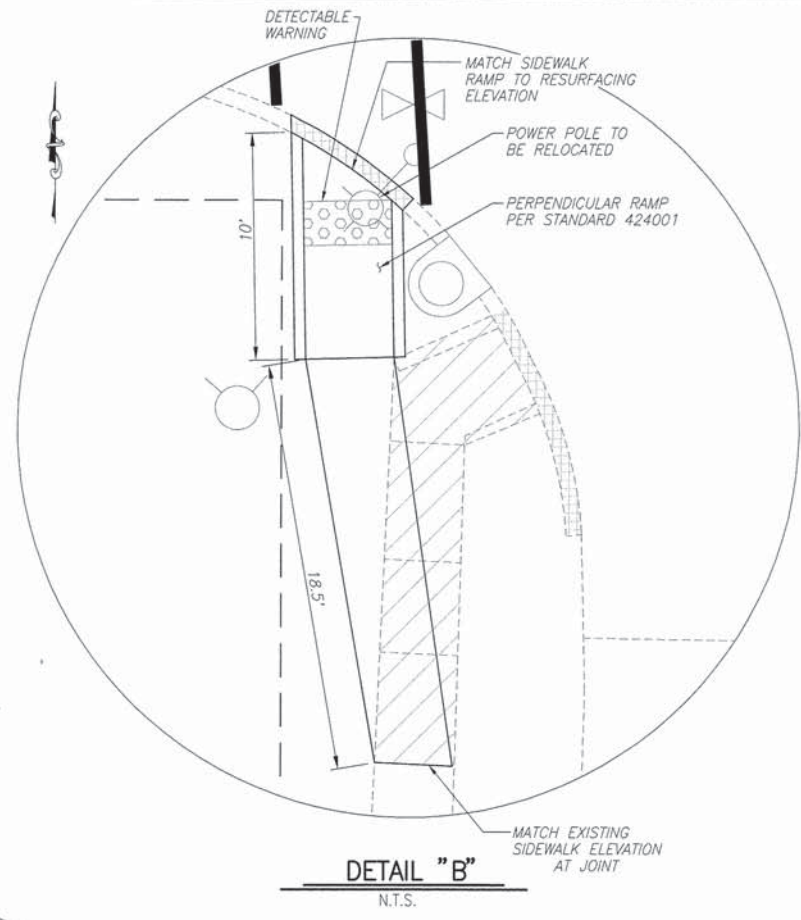
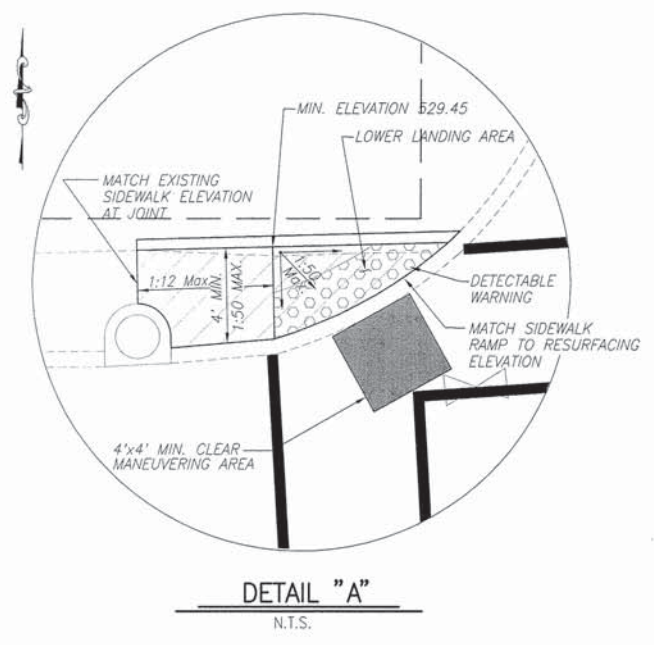
F.A.U. ROUTE	SECTION	COUNTY	TOTAL SHEETS	SHEET NUMBER
8557	13-00076-00-RS	MARION	12	6
FEDERAL AID PROJECT			CONTRACT 97567	

BENCHMARKS

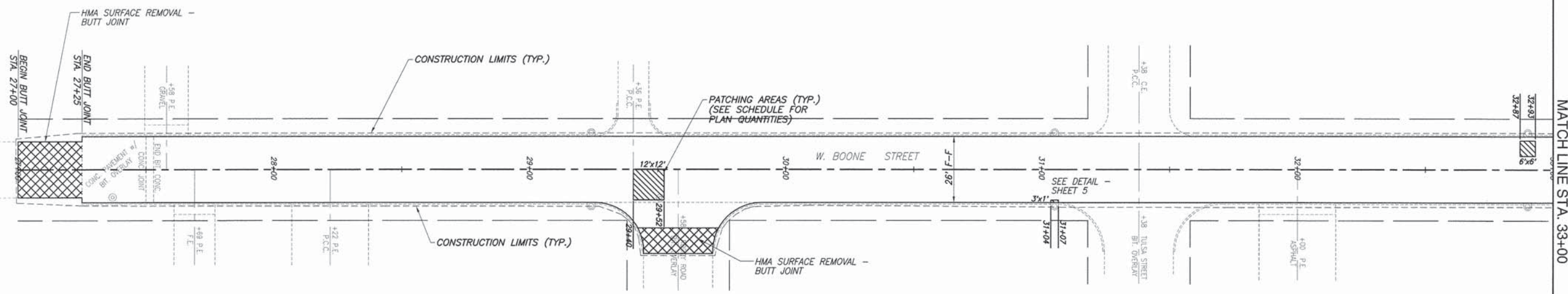
- ◆ T.B.M. 2/12/02 - TOP OF NORTHEAST FLANGE BOLT BETWEEN "MUE" & "LLER" ON FIRE HYDRANT; LOCATED IN THE SOUTHWEST QUADRANT OF W. BOONE ST. & N. COLLEGE AVE. ELEV. 532.39
- ◆ T.B.M. - SOUTHEAST CORNER OF FOUNDATION PAD OF TRAFFIC SIGNAL CABINET; LOCATED ON NORTHWEST QUADRANT OF BROADWAY AVE. & BOONE ST. ELEV. 549.41

GENERAL NOTES

- CURB REMOVAL INCLUDES CURB, RECESSED CURB AND PAVEMENT WITHIN THE LIMITS SPECIFIED.
- IN ADDITION TO THE DETAILS SHOWN, THE FOLLOWING STANDARDS SHALL BE UTILIZED DURING SIDEWALK CONSTRUCTION: 424001 AND 424021.
- ALL SIDE CURBS ARE INCLUDED IN THE COST OF THE P.C.C. SIDEWALK.
- ANY EARTH EXCAVATION AND SEEDING SHALL BE INCLUDED IN THE COST OF THE P.C.C. SIDEWALK.



F.A.U. ROUTE	SECTION	COUNTY	TOTAL SHEETS	SHEET NUMBER
8557	13-00076-00-RS	MARION	12	7
FEDERAL AID PROJECT		CONTRACT 97567		

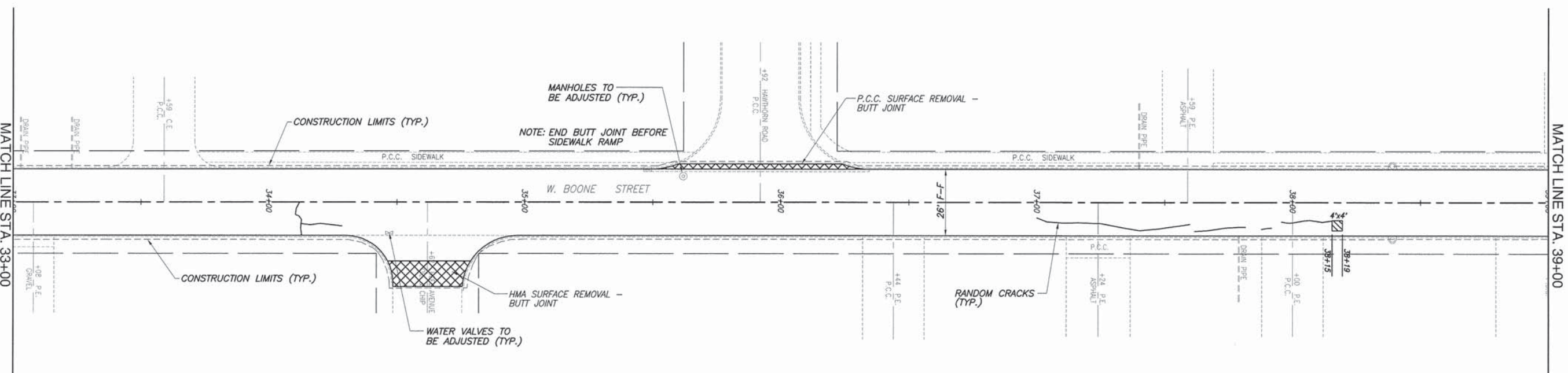


NOTE:
WIDER TRANSVERSE CRACKS EXIST AT WEST END OF PROJECT. THE ENGINEER SHALL DESIGNATE THOSE CRACKS TO BE FILLED.

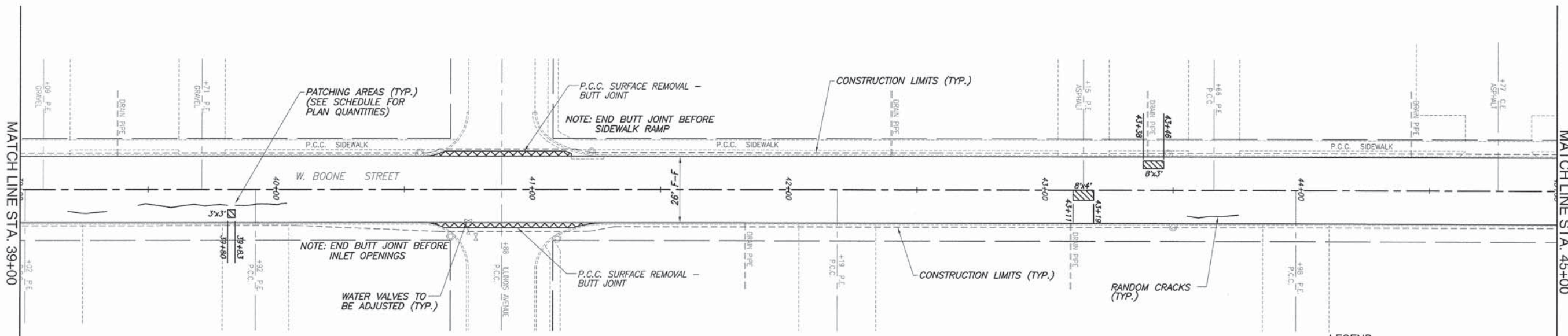
LEGEND

- AREA INLET
- STORM INLET
- WATER VALVE
- SANITARY SEWER MANHOLE
- GAS METER
- GAS VALVE

SCALE: 0 20 40 FEET

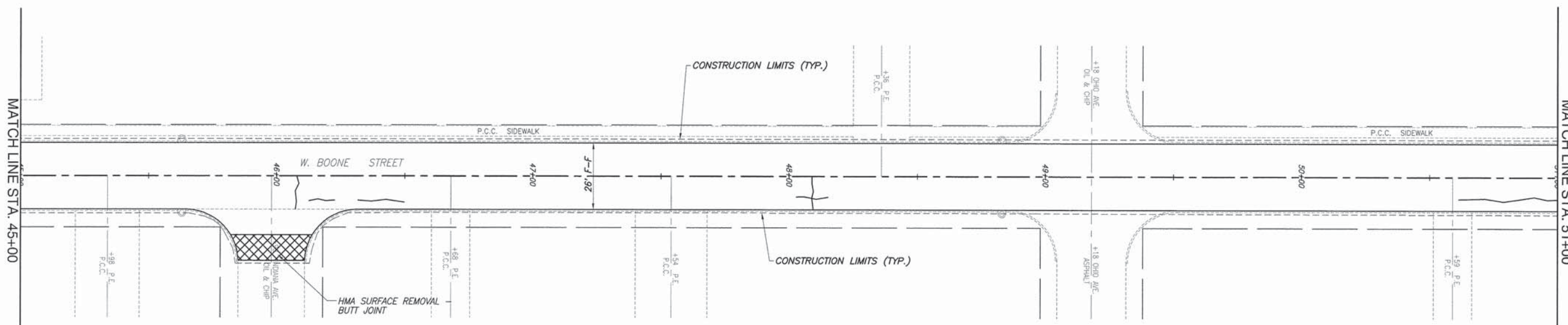


F.A.U. ROUTE	SECTION	COUNTY	TOTAL SHEETS	SHEET NUMBER
8557	13-00076-00-RS	MARION	12	8
FEDERAL AID PROJECT		CONTRACT 97567		

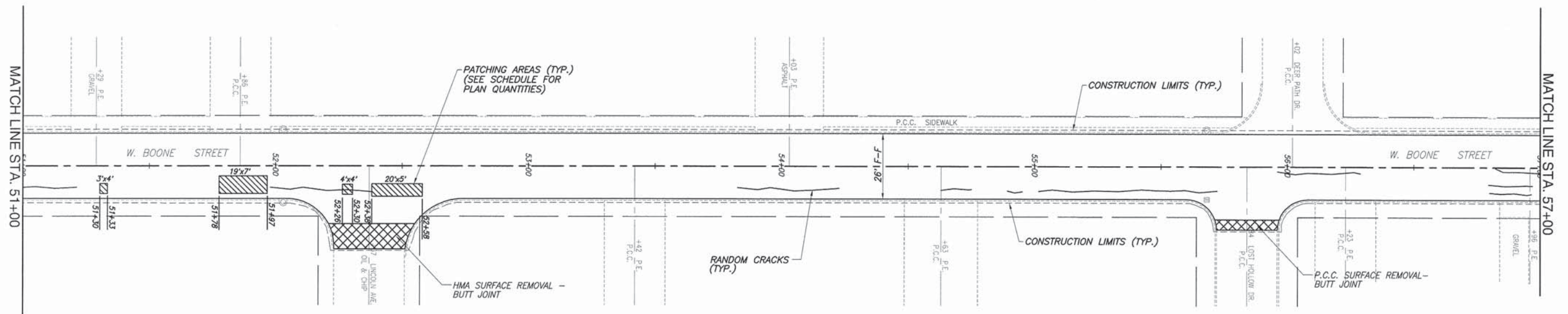


NOTE:
LOCATION OF RANDOM CRACKS IS APPROXIMATE AND ARE SHOWN TO DESIGNATE AREAS OF PROPOSED CRACK FILLING OPERATIONS.

- LEGEND**
- AREA INLET
 - STORM INLET
 - WATER VALVE
 - SANITARY SEWER MANHOLE
 - GAS METER
 - GAS VALVE



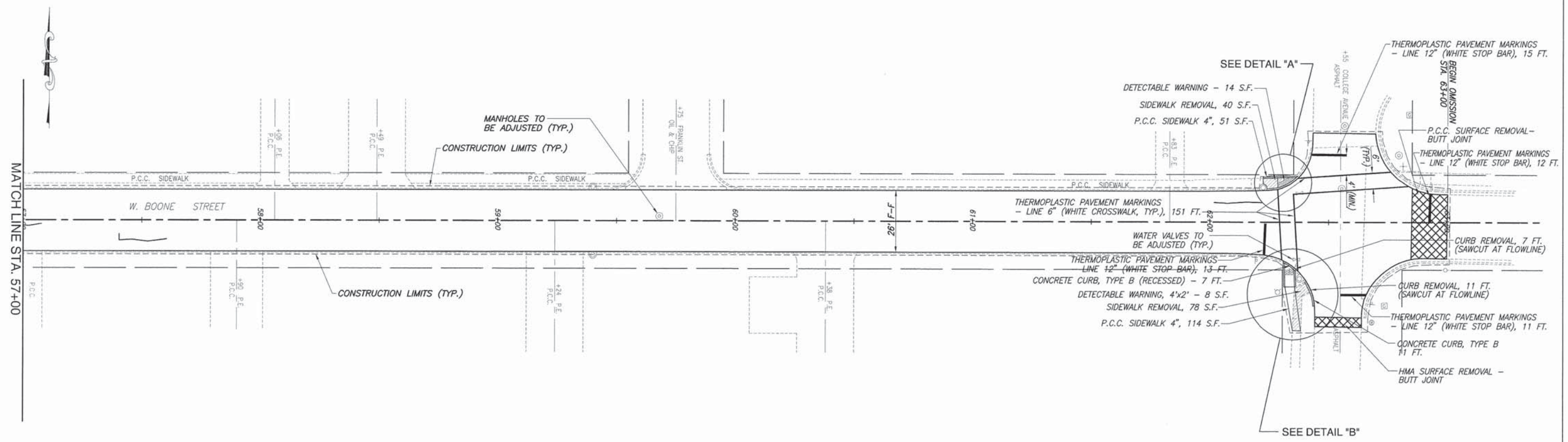
F.A.U. ROUTE	SECTION	COUNTY	TOTAL SHEETS	SHEET NUMBER
8557	13-00076-00-RS	MARION	12	9
FEDERAL AID PROJECT		CONTRACT 97567		



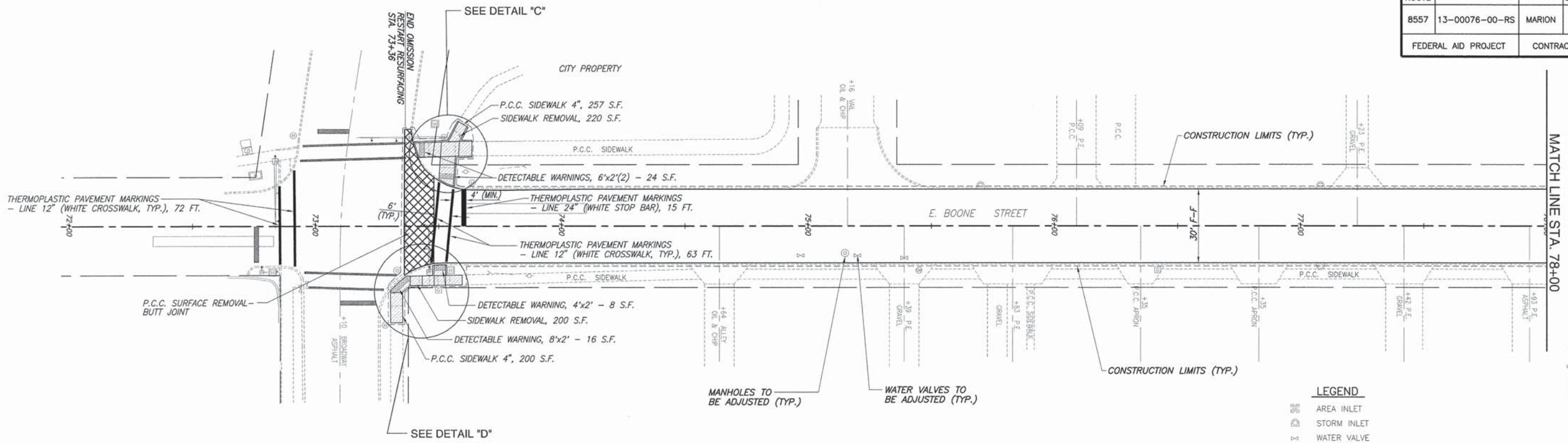
LEGEND

- AREA INLET
- STORM INLET
- WATER VALVE
- SANITARY SEWER MANHOLE
- GAS METER
- GAS VALVE

SCALE: 0 20 40 FEET



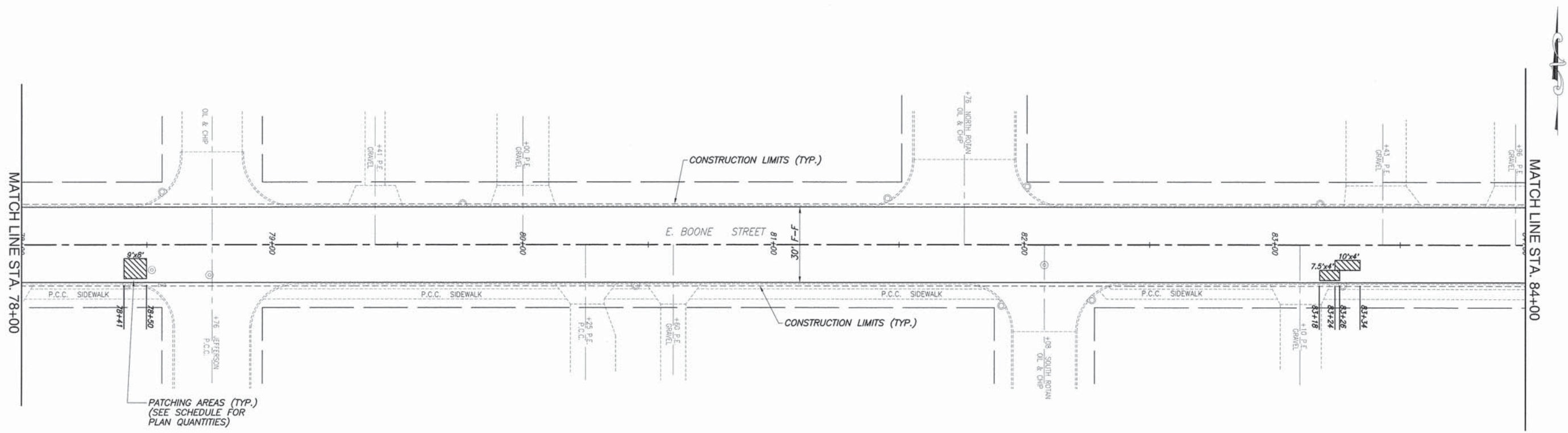
F.A.U. ROUTE	SECTION	COUNTY	TOTAL SHEETS	SHEET NUMBER
8557	13-00076-00-RS	MARION	12	10
FEDERAL AID PROJECT		CONTRACT 97567		



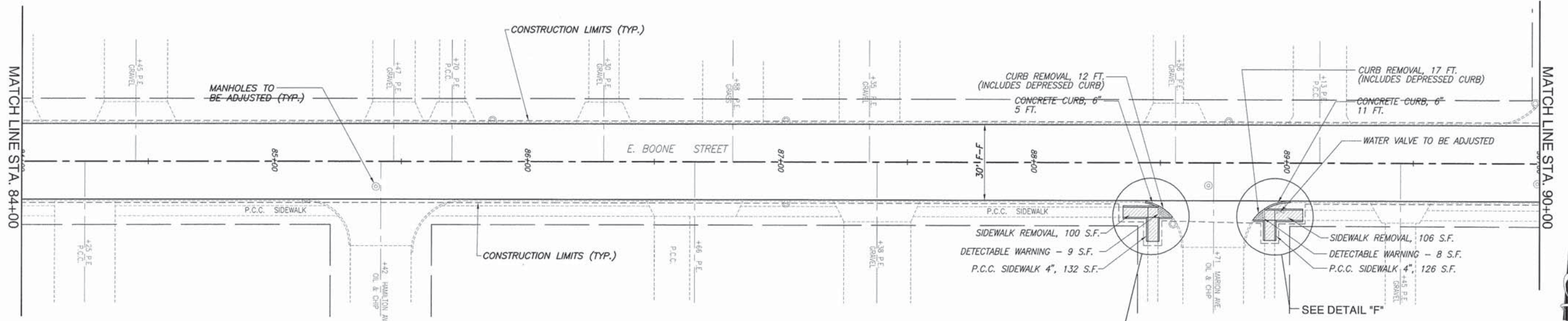
LEGEND

- AREA INLET
- STORM INLET
- WATER VALVE
- SANITARY SEWER MANHOLE
- GAS METER
- GAS VALVE

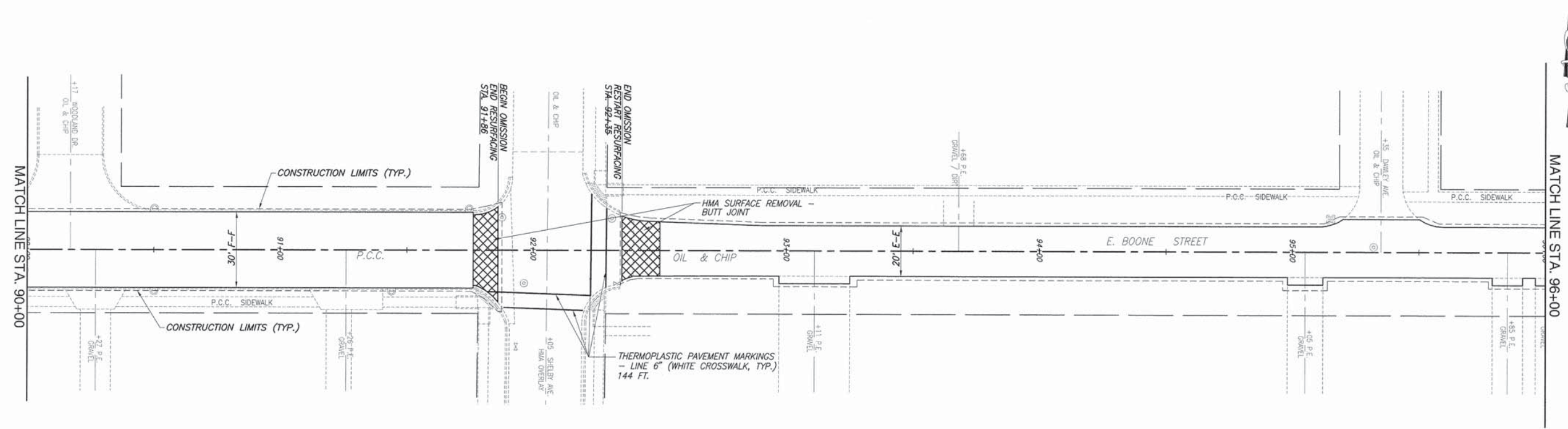
SCALE: 0 20 40 FEET



F.A.U. ROUTE	SECTION	COUNTY	TOTAL SHEETS	SHEET NUMBER
8557	13-00076-00-RS	MARION	12	11
FEDERAL AID PROJECT		CONTRACT 97567		



- LEGEND**
- AREA INLET
 - STORM INLET
 - WATER VALVE
 - SANITARY SEWER MANHOLE
 - GAS METER
 - GAS VALVE



F.A.U. ROUTE	SECTION	COUNTY	TOTAL SHEETS	SHEET NUMBER
8557	13-00076-00-RS	MARION	12	12
FEDERAL AID PROJECT		CONTRACT 97567		

