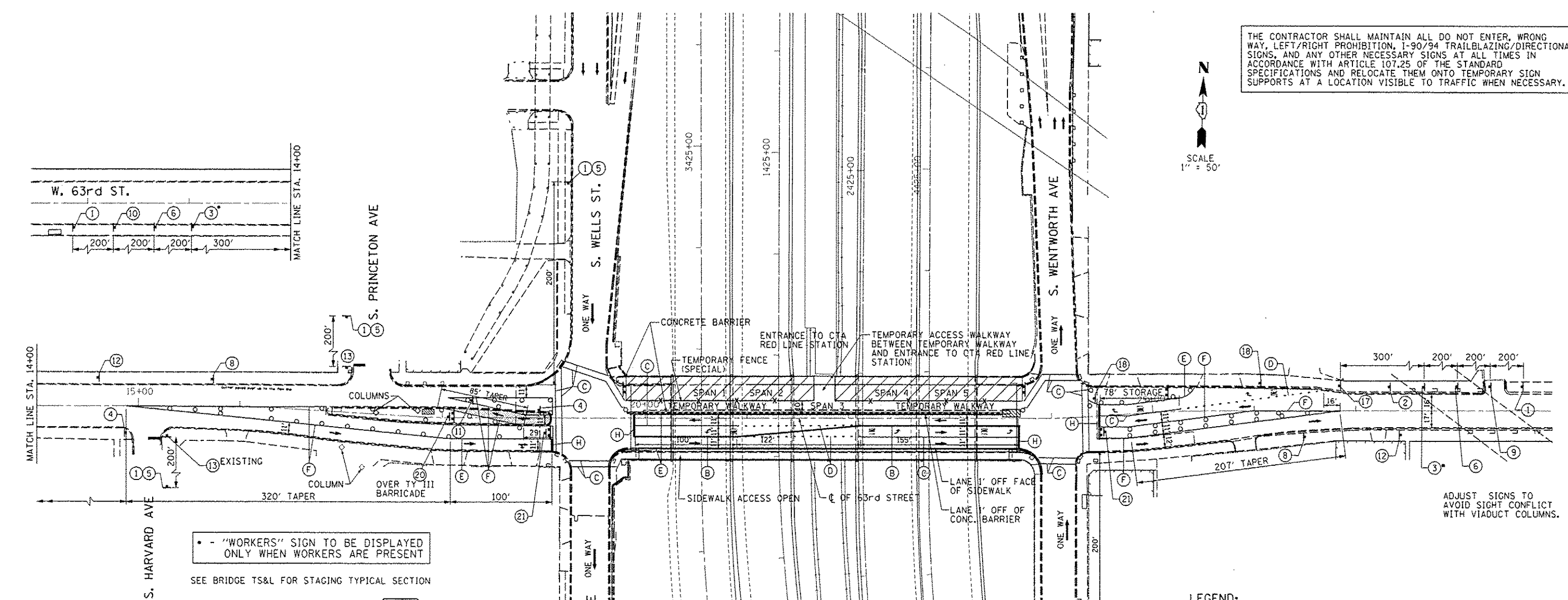
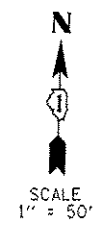


THE CONTRACTOR SHALL MAINTAIN ALL DO NOT ENTER, WRONG WAY, LEFT/RIGHT PROHIBITION, I-90/94 TRAILBLAZING/DIRECTIONAL SIGNS, AND ANY OTHER NECESSARY SIGNS AT ALL TIMES IN ACCORDANCE WITH ARTICLE 107.25 OF THE STANDARD SPECIFICATIONS AND RELOCATE THEM ONTO TEMPORARY SIGN SUPPORTS AT A LOCATION VISIBLE TO TRAFFIC WHEN NECESSARY.



• - "WORKERS" SIGN TO BE DISPLAYED ONLY WHEN WORKERS ARE PRESENT
SEE BRIDGE TS&L FOR STAGING TYPICAL SECTION

WORK ZONE W2-115(O)-3618
SPEED LIMIT 30 R2-1-3648
PHOTO ENFORCED R10-190P-3618
S37 FINE MINIMUM R2-1106-3618

YIELD R1-2-48

ROAD CONSTRUCTION AHEAD W20-1103(O)-48
RIGHT TURN AHEAD W1-3L(O)-48
WORKER W21-1A(O)-48
LEFT TURN AHEAD W1-3R(O)-48
TRUCKS AHEAD M6-4(O)-2115

TRUCKS AHEAD W3-2(O)-48
LANE CLOSED AHEAD W6-3-48
RIGHT LANE CLOSED AHEAD W20-5R(O)-48
LEFT LANE CLOSED AHEAD W20-5L(O)-48
END WORK ZONE SPEED LIMIT W4-1(R)-48
STOP G20-1103(O)-3660
ONE WAY R1-1 R6-2R(O)-48

DO NOT ENTER R5-1
RIGHT TURN MUST TURN RIGHT R3
RIGHT LANE MUST TURN RIGHT R3-7R-30
ONLY R3-5R-30
DRIVEWAY ENTRANCE W1-6R
KEEP RIGHT R4-7A

STAGE III:

- 63RD STREET:
1. INSTALL ALL TRAFFIC CONTROL, PAVEMENT MARKING, TAPERS, DRUMS, BARRICADES, SIGNING AND REMOVE CONFLICTING PAVEMENT MARKING. INSTALL TEMPORARY PAVEMENT WEST OF YALE AVENUE. INSTALL CONCRETE BARRIERS AND IMPACT ATTENUATORS. PLACE TEMPORARY TRAFFIC SIGNALS TO STAGE III CONFIGURATION.
- REMOVE AND RECONSTRUCT NORTH PORTION OF BRIDGE, ABUTMENTS, PIERS, APPROACH PANELS AND RECONSTRUCTED PAVEMENTS. PROVIDE TEMPORARY ACCESS WALKWAY TO MAINTAIN ACCESS TO CTA STATION. CONTRACTOR MUST MINIMIZE SPAN 3 BEAM REMOVAL AND REPLACEMENT DURATION IN ORDER TO REDUCE THE TIME OF NO ACCESS TO CTA STATION. RECONSTRUCT PAVEMENTS AND SIDEWALK AS REQUIRED. COORDINATE SHIFTING OF ELECTRICAL CONDUITS.
- COMPLETE PERMANENT SIGNALS, LIGHTING, MISCELLANEOUS PAVING, STABILIZED MEDIAN WEST OF YALE AVE., SIGNAGE AND PAVEMENT MARKING.
- TAPE TEMPORARY PAVEMENT MARKINGS SHALL BE USED ON EXISTING/NEWLY CONSTRUCTED SURFACES. TEMPORARY PAINT SHALL BE USED ON TEMPORARY PAVEMENT OR PAVEMENT TO BE REMOVED.
- TEMPORARY PAVEMENT MARKING (PAINT) SHALL BE REQUIRED ON ALL TEMPORARY PAVEMENT SURFACES OVER THE WINTER MONTHS. PAINT USED OVER THE WINTER MONTHS IN THE TRANSITION AREAS ON EXISTING SURFACES SHALL BE REMOVED BY GRINDING WHEN THE FINAL PAVEMENT MARKINGS ARE INSTALLED. ON EXPRESSWAYS, EPOXY MARKINGS SHALL BE REQUIRED ON ALL TEMPORARY PAVEMENT SURFACES OVER THE WINTER MONTHS. EPOXY USED OVER THE WINTER IN TRANSITION AREAS AT THE LIMITS OF CONSTRUCTION ON EXISTING SURFACES SHALL BE REMOVED BY GRINDING WHEN FINAL PAVEMENT MARKINGS ARE INSTALLED.

LEGEND:

- [Hatched Box] - STAGE III WORK AREA
- [Solid Line] - CONCRETE BARRIER
- [Dashed Line] - TEMPORARY FENCE (SPECIAL)
- [Dotted Line] - EXISTING PAVEMENT MARKINGS
- [Solid Line] - PROPOSED PAVEMENT MARKINGS
- (A) - 4" YELLOW LINE
- (B) - 4" DOUBLE YELLOW LINE
- (C) - 6" WHITE LINE
- (D) - 6" WHITE DOTTED LINE (2' DASH 6' SKIP)
- (E) - 4" WHITE LINE
- (F) - 8" WHITE LINE
- (G) - 12" WHITE DIAGONAL LINE
- (H) - 24" WHITE LINE
- [Arrow] - ARROW BOARD
- (O) - DRUMS OR TYPE II BARRICADES WITH MONO-DIRECTIONAL STEADY BURN LIGHTS IN MULTI-LANE OR ONE WAY SECTIONS AND BI-DIRECTIONAL STEADY BURN LIGHTS IN TWO LANE TWO WAY SECTIONS, SPACED AT 50' C-C IN TANGENT SECTIONS AND 20' C-C IN TAPER SECTIONS AND CORNER RADII PER THE HIGHWAY STANDARDS.
- [Arrow] - TRAFFIC DIRECTION
- [Hatched Box] - IMPACT ATTENUATOR, TEMP. (FULLY REDIRECTIVE, NARROW) TEST LEVEL 2
- [Symbol] - TYPE III BARRICADE
- [Hatched Box] - REMOVE EXISTING CURB AND GUTTER AND MEDIAN SURFACE. PAVE WITH TEMPORARY PAVEMENT (10" HMA) ON A 4" AGGREGATE BASE COURSE.

ADJUST SIGNS TO AVOID SIGHT CONFLICT WITH VIADUCT COLUMNS.

FILES 6/27/2013 2:54:44 AM