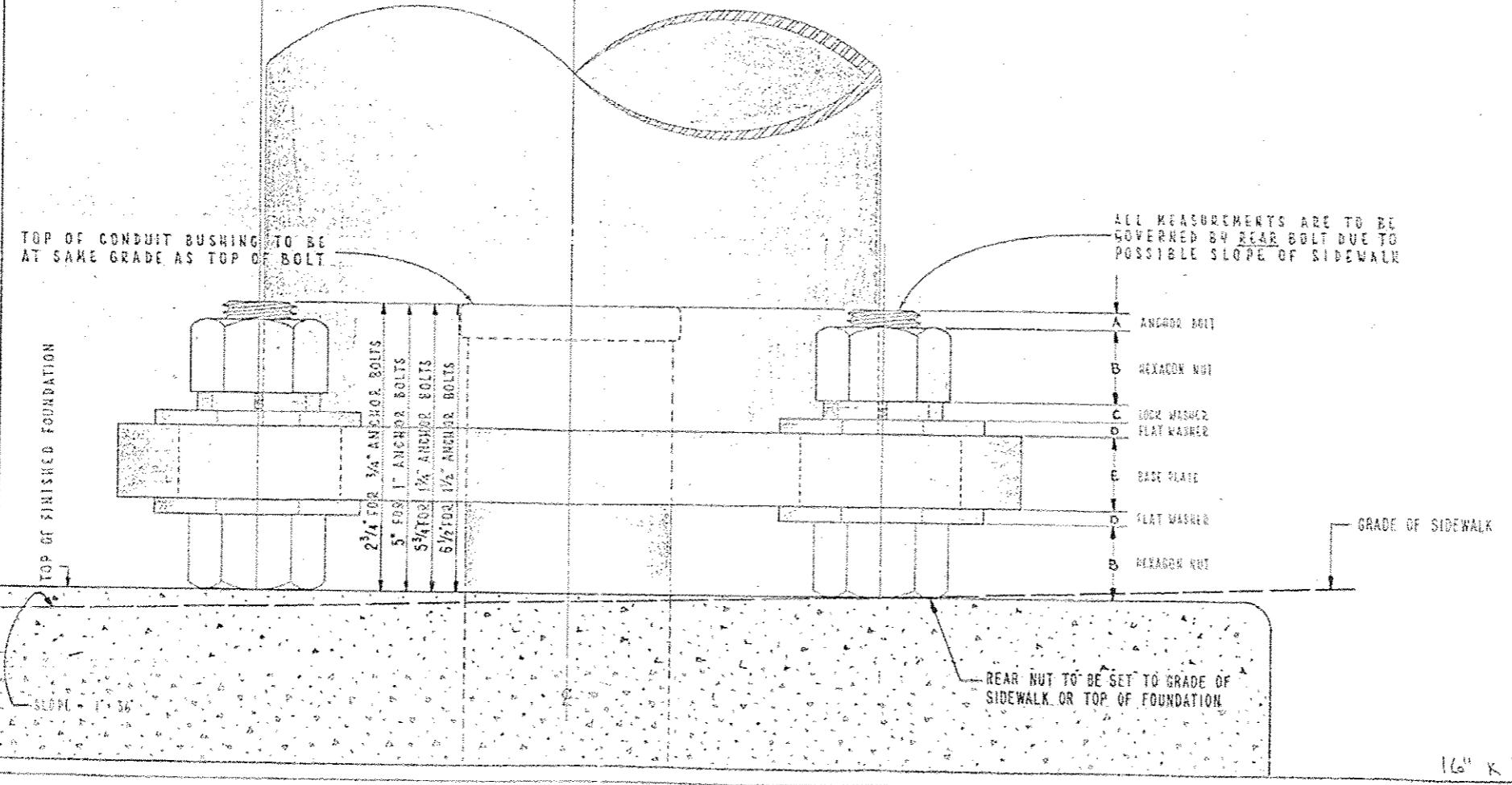


- INSTALLATION NOTES**
- STEP 1 COAT EXPOSED PORTION OF ANCHOR BOLTS WITH APPROVED ANTI RUSTING GREASE ("NO-OX" OR EQUAL).
 - STEP 2 INSTALL LOWER LEVELLING NUTS & WASHERS, SET AT PROPER GRADE WITH HAND LEVEL. USE TABLE FOR APPROPRIATE DIMENSIONS.
 - STEP 3 MOUNT POLE OR PEDESTAL, ATTACH TOP WASHERS & NUTS HAND TIGHT.
 - STEP 4 PLUMB POLE OR PEDESTAL AFTER ALL MASTARMS, STREET LIGHTS, TRAFFIC SIGNALS & OTHER APPURTENANCES ARE ATTACHED TO POLE & TIGHTEN ALL NUTS.
 - STEP 5 ATTACH NUT COVERS WHERE REQUIRED.
 - STEP 6 DO NOT GROUT IN SPACE BETWEEN BOTTOM OF POLE & TOP OF FOUNDATION. TOP OF FOUNDATION OR SURFACE OF SIDEWALK MUST BE LEFT CLEAN AND SMOOTH.
 - STEP 7 POLE OR PEDESTAL IS TO BE PERFECTLY PLUMB, NO "KARE" IS TO BE LEFT.

IF NECESSARY, ANCHOR BOLT TO BE TRIMMED WITH SAW, DO NOT BURN, AS THIS PRACTICALLY REDUCES THE TENSILE STRENGTH OF ANCHOR BOLT.

COAT ANCHOR BOLT WITH RUST-OLEUM HARD HAT ZINC RICH COMPOUND.

T A B L E						
I N S T A L L A T I O N	ANCHOR BOLT SIZE					
	1"	1 1/4"	1 1/2"	1 3/4"	2"	2 1/2"
	POLE GAUGES					
	7 GA.	3 GA.	7 GA.	3 GA.	7 GA.	3 GA.
	ALUM. PEB.					
A	7/16"	7/16"	1/8"	1/16"	1/8"	3/4"
B	1"	1"	1/4"	1/4"	1/2"	3/4"
C	1/4"	1/4"	5/16"	5/16"	3/8"	3/16"
D	5/32"	5/32"	1/4"	1/4"	1/4"	5/32"
E	1"	1"	1/4"	1/2"	1/2"	5/8"



CONSTRUCTION METHOD FOR "DOUBLE-NUT" INSTALLATION OF POLES AND PEDESTALS

CITY OF CHICAGO
 DEPT. OF PUBLIC WORKS
 DIVISION OF ELECTRICAL ENGINEERING

DESIGNED BY: ERIC GERULIS
 CHECKED BY: [Signature]
 DATE: 02-22-2012

837

DATE: 02-22-2012