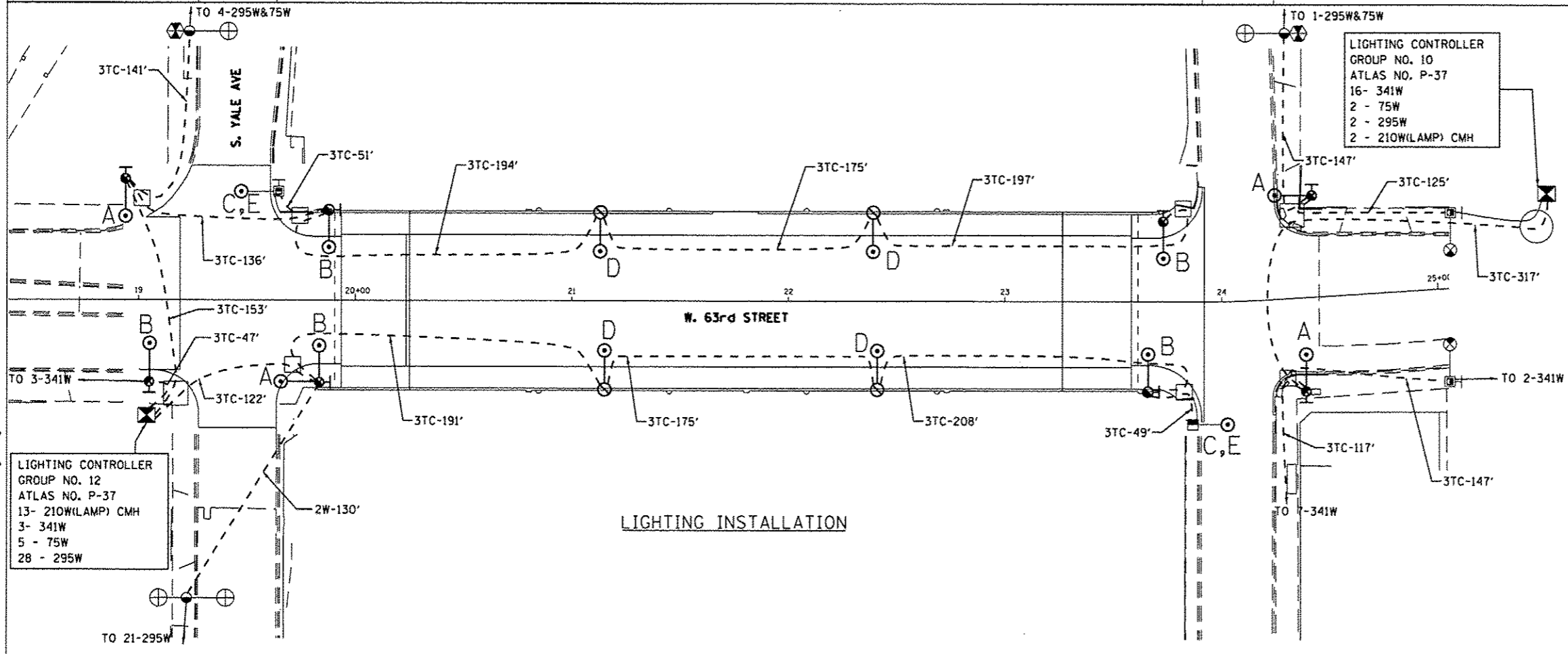


- REMOVAL LEGENDS:**
- "U" -- REMOVE LIGHTING MAST ARM AND LUMINAIRE  
SEE TRAFFIC SIGNAL PLANS FOR POLE AND FOUNDATION REMOVAL
  - "V" -- REMOVE LIGHT POLE, MAST ARM AND LUMINAIRE MOUNTED ON BRIDGE STRUCTURE
  - "W" -- REMOVE EMBEDDED LIGHT POLE, MAST ARM AND LUMINAIRE
  - "X" -- REMOVE LUMINAIRE ONLY



- INSTALLATION LEGENDS:**
- "A" -- INSTALL 15FT STEEL MAST ARM AND 210W CMH SEMI-CUTOFF COBRAHEAD LUMINAIRE ON TRAFFIC SIGNAL POLE  
SEE TRAFFIC SIGNAL PLANS FOR POLE AND FOUNDATION
  - "B" -- INSTALL 8FT STEEL MAST ARM AND 210W CMH SEMI-CUTOFF COBRAHEAD LUMINAIRE ON TRAFFIC SIGNAL POLE  
SEE TRAFFIC SIGNAL PLANS FOR POLE AND FOUNDATION
  - "C" -- INSTALL 210W CMH SEMI-CUTOFF COBRAHEAD LUMINAIRE ON EXISTING LIGHT POLE
  - "D" -- INSTALL 8FT STEEL MAST ARM, 210W CMH SEMI-CUTOFF COBRAHEAD LUMINAIRE AND STEEL LIGHT POLE, BLACK PAINT, 32'-6", 11 1/2" B.C. ANCHOR BASE.,
  - "E" -- PAINT LIGHT POLE BLACK PER STANDARDS
  - "3TC" -- INSTALL TRIPLEX CABLE, 600V, 2-1/C\*6, 1/C\*8 (GREEN) GND IN CONDUIT
  - "2W" -- INSTALL 2-1/C\*6 HDNS. AERIAL CABLE

d:\298\09\CAD\_Sheets\CDDT\060J15-sh1-cddt1g10.dgn

	USER NAME * kprajapati	DESIGNED - BN	REVISED -	<b>CITY OF CHICAGO</b> <b>DEPARTMENT OF TRANSPORTATION</b> <b>DIVISION OF ENGINEERING</b>	<b>63rd STREET OVER DAN RYAN EXPRESSWAY (1-90 /94)</b> <b>STREET LIGHTING REMOVAL AND INSTALLATION PLAN</b>	F.A.I. RTE. 94	SECTION 1920-B	COUNTY COOK	TOTAL SHEETS 137	SHEET NO. 56		
	PLOT SCALE * 68.88888881.000000	CHECKED - KCP	REVISED -			SCALE: N.T.S.	SHEET NO. 10 OF 13 SHEETS	STA. TO STA.	FED. ROAD DIST. NO. 1 [ILLINOIS] FED. AID PROJECT	CONTRACT NO. 60J15		
	PLOT DATE * 15-MAY-2013 17:26	DATE - 5/15/2013	REVISED -						<div style="text-align: right;"> <b>E-10</b>  <b>DEO</b>  <b>SHEET NO.</b> </div>			