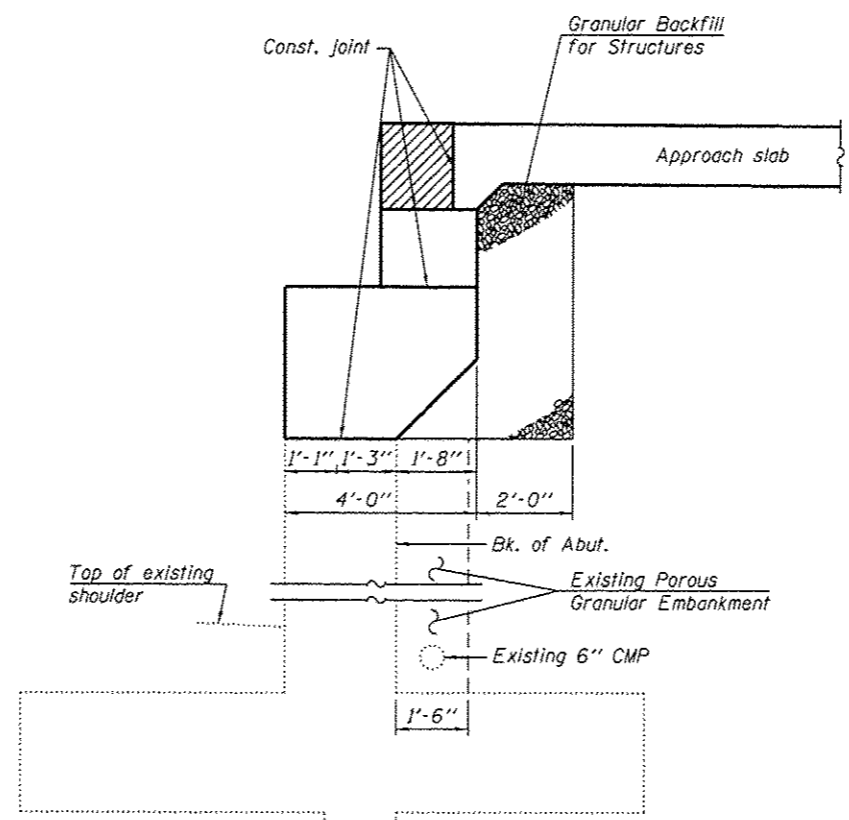
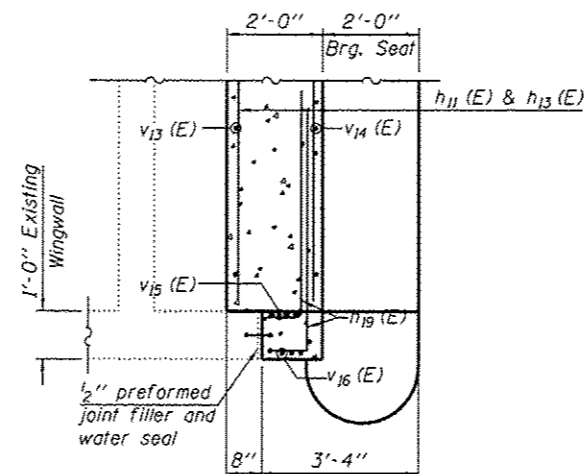


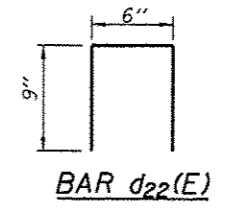
SECTION A-A



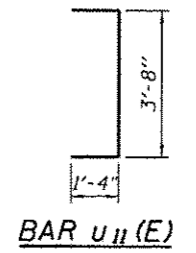
SECTION THRU ABUTMENTS



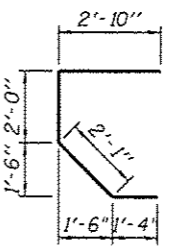
SECTION B-B



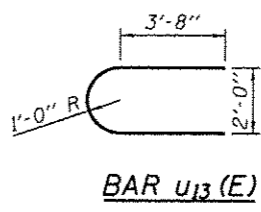
BAR d22(E)



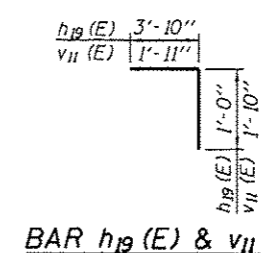
BAR u11(E)



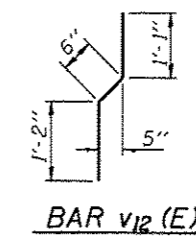
BAR u12(E)



BAR u13(E)



BAR h19(E) & v11(E)



BAR v12(E)

WEST ABUTMENT
BILL OF MATERIAL

Bar	No.	Size	Length	Shape
d22(E)	4	#4	2'-0"	□
h11(E)	22	#5	25'-1"	—
h12(E)	19	#5	20'-8"	—
h13(E)	11	#5	13'-2"	—
h14(E)	16	#5	25'-6"	—
h15(E)	8	#5	14'-6"	—
h16(E)	3	#5	17'-3"	—
h17(E)	12	#5	1'-0"	—
h18(E)	3	#5	5'-3"	—
h19(E)	16	#5	4'-10"	—
u11(E)	85	#5	6'-4"	U
u12(E)	85	#5	8'-3"	U
u13(E)	8	#5	10'-6"	U
v11(E)	83	#5	3'-9"	T
v12(E)	83	#5	2'-9"	T
v13(E)	83	#5	3'-4"	T
v14(E)	83	#5	6'-0"	T
v15(E)	8	#6	9'-6"	T
v16(E)	8	#4	9'-6"	T
Structure Excavation			Cu. yd	117
Concrete Structures			Cu. yd	51.1
Reinforcement Bars, Epoxy Coated			Pound	4,770
Concrete Sealer			Sq. Ft.	771
Granular Backfill for Structures			Cu. yd	46

EAST ABUTMENT
BILL OF MATERIAL

Bar	No.	Size	Length	Shape
d22(E)	4	#4	2'-0"	□
h11(E)	22	#5	25'-1"	—
h12(E)	19	#5	20'-8"	—
h13(E)	11	#5	13'-2"	—
h14(E)	16	#5	25'-6"	—
h15(E)	8	#5	14'-6"	—
h16(E)	3	#5	17'-3"	—
h17(E)	12	#5	1'-0"	—
h18(E)	3	#5	5'-3"	—
h19(E)	16	#5	4'-10"	—
u11(E)	85	#5	6'-4"	U
u12(E)	85	#5	8'-3"	U
u13(E)	8	#5	10'-6"	U
v11(E)	83	#5	3'-9"	T
v12(E)	83	#5	2'-9"	T
v13(E)	83	#5	3'-4"	T
v14(E)	83	#5	6'-0"	T
v15(E)	8	#6	9'-6"	T
v16(E)	8	#4	9'-6"	T
Structure Excavation			Cu. yd	100
Concrete Structures			Cu. yd	51.4
Reinforcement Bars, Epoxy Coated			Pound	4,770
Concrete Sealer			Sq. Ft.	772
Granular Backfill for Structures			Cu. yd	46

NOTES

- For details of Bar Splicers, see sheet S49.
- Hatched area to be poured after superstructure false work has been removed. Quantity of concrete included with Concrete Superstructure.

H:\Jobs\2013\20130224\CAD\Structure\dwg\016-1149_Final\001\0160105-s34-abut-dt.dgn
 5/20/2013 10:24:42 AM