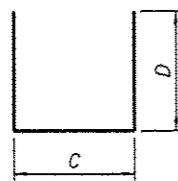


A & B DIMENSIONS

Bar	A	B
p1(E)	29'-2"	1'-7"
v2(E)	11'-6"	1'-7"
v4(E)	8'-9"	1'-7"
v6(E)	10'-10"	1'-7"

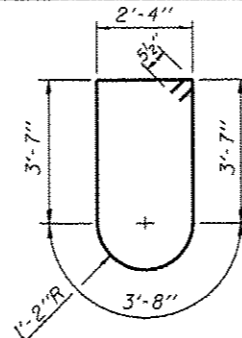
BARS p1(E), v2(E), v4(E) & v6(E)



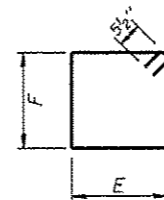
C & D DIMENSIONS

Bar	C	D
p3(E)	20'-8"	1'-7"
p5(E)	14'-5"	1'-7"
u1(E)	2'-3"	1'-11"
u3(E)	2'-3"	2'-3"

BARS p3(E), p5(E), u1(E) & u3(E)



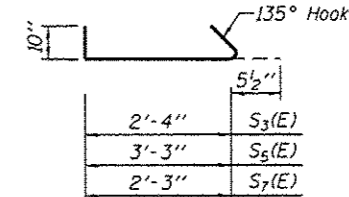
BAR s2(E)



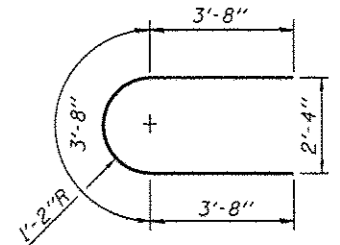
E & F DIMENSIONS

Bar	E	F
s1(E)	1'-6"	3'-8"
s4(E)	3'-3"	2'-4"
s6(E)	2'-3"	2'-4"

BARS s1(E), s4(E) & s6(E)



BARS s3(E), s5(E) & s7(E)



BAR u2(E)

**PIER 1
BILL OF MATERIAL**

Bar	No.	Size	Length	Shape
d1(E)	120	#6	3'-1"	—
h1(E)	19	#5	47'-4"	—
h2(E)	19	#5	20'-8"	—
h3(E)	19	#5	14'-5"	—
h4(E)	3	#5	5'-2"	—
h5(E)	3	#5	17'-3"	—
p1(E)	12	#9	30'-9"	┘
p2(E)	7	#9	47'-3"	—
p3(E)	6	#9	23'-10"	┘
p4(E)	7	#9	20'-8"	—
p5(E)	6	#9	17'-7"	┘
p6(E)	7	#9	14'-5"	—
s1(E)	324	#5	11'-3"	□
s2(E)	16	#5	14'-1"	□
s3(E)	104	#5	3'-8"	┘
s4(E)	24	#5	12'-1"	□
s5(E)	24	#5	4'-7"	┘
s6(E)	16	#5	10'-1"	□
s7(E)	16	#5	3'-7"	┘
u1(E)	24	#5	6'-1"	┘
u2(E)	16	#5	11'-0"	┘
u3(E)	60	#5	6'-9"	┘
v1(E)	52	#7	6'-3"	—
v2(E)	98	#9	13'-1"	—
Concrete Structures			Cu. Yd.	71.8
Reinforcement Bars, Epoxy Coated			Pound	17,180
Concrete Sealer			Sq. Ft.	2,166

**PIER 2
BILL OF MATERIAL**

Bar	No.	Size	Length	Shape
h1(E)	10	#5	47'-4"	—
h2(E)	10	#5	20'-8"	—
h3(E)	10	#5	14'-5"	—
h4(E)	3	#5	5'-2"	—
h5(E)	3	#5	17'-3"	—
p1(E)	12	#9	30'-9"	┘
p2(E)	7	#9	47'-3"	—
p3(E)	6	#9	23'-10"	┘
p4(E)	7	#9	20'-8"	—
p5(E)	6	#9	17'-7"	┘
p6(E)	7	#9	14'-5"	—
s1(E)	324	#5	11'-3"	□
s2(E)	12	#5	14'-1"	□
s3(E)	78	#5	3'-8"	┘
s4(E)	18	#5	12'-1"	□
s5(E)	18	#5	4'-7"	┘
s6(E)	12	#5	10'-1"	□
s7(E)	12	#5	3'-7"	┘
u1(E)	24	#5	6'-1"	┘
u2(E)	10	#5	11'-0"	┘
v1(E)	52	#7	6'-3"	—
v4(E)	98	#9	10'-4"	—
Concrete Structures			Cu. Yd.	45.9
Reinforcement Bars, Epoxy Coated			Pound	14,130
Concrete Sealer			Sq. Ft.	1,371

**PIER 3
BILL OF MATERIAL**

Bar	No.	Size	Length	Shape
h1(E)	10	#5	47'-4"	—
h2(E)	10	#5	20'-8"	—
h3(E)	10	#5	14'-5"	—
h4(E)	3	#5	5'-2"	—
h5(E)	3	#5	17'-3"	—
p1(E)	12	#9	30'-9"	┘
p2(E)	7	#9	47'-3"	—
p3(E)	6	#9	23'-10"	┘
p4(E)	7	#9	20'-8"	—
p5(E)	6	#9	17'-7"	┘
p6(E)	7	#9	14'-5"	—
s1(E)	324	#5	11'-3"	□
s2(E)	12	#5	14'-1"	□
s3(E)	78	#5	3'-8"	┘
s4(E)	18	#5	12'-1"	□
s5(E)	18	#5	4'-7"	┘
s6(E)	12	#5	10'-1"	□
s7(E)	12	#5	3'-7"	┘
u1(E)	24	#5	6'-1"	┘
u2(E)	10	#5	11'-0"	┘
v1(E)	52	#7	6'-3"	—
v4(E)	98	#9	10'-4"	—
Concrete Structures			Cu. Yd.	45.3
Reinforcement Bars, Epoxy Coated			Pound	14,130
Concrete Sealer			Sq. Ft.	1,348

**PIER 4
BILL OF MATERIAL**

Bar	No.	Size	Length	Shape
d1(E)	120	#6	3'-1"	—
h1(E)	19	#5	47'-4"	—
h2(E)	19	#5	20'-8"	—
h3(E)	19	#5	14'-5"	—
h4(E)	3	#5	5'-2"	—
h5(E)	3	#5	17'-3"	—
p1(E)	12	#9	30'-9"	┘
p2(E)	7	#9	47'-3"	—
p3(E)	6	#9	23'-10"	┘
p4(E)	7	#9	20'-8"	—
p5(E)	6	#9	17'-7"	┘
p6(E)	7	#9	14'-5"	—
s1(E)	324	#5	11'-3"	□
s2(E)	16	#5	14'-1"	□
s3(E)	104	#5	3'-8"	┘
s4(E)	24	#5	12'-1"	□
s5(E)	24	#5	4'-7"	┘
s6(E)	16	#5	10'-1"	□
s7(E)	16	#5	3'-7"	┘
u1(E)	24	#5	6'-1"	┘
u2(E)	16	#5	11'-0"	┘
u3(E)	60	#5	6'-9"	┘
v1(E)	52	#7	6'-3"	—
v6(E)	98	#9	12'-5"	—
Concrete Structures			Cu. Yd.	70.2
Reinforcement Bars, Epoxy Coated			Pound	16,960
Concrete Sealer			Sq. Ft.	2,112

H:\Jobs\2011\20130222\CAD\Structural\Drawn\016-1149-Final\00\060J15-e47-pler-bom.dgn
 5/20/2013 10:48 AM