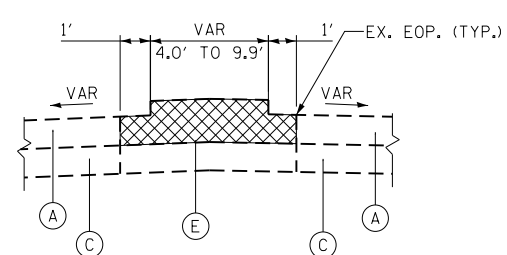


EXISTING COUNTY LINE ROAD TYPICAL SECTION

NB: STA. 62+00.00 TO STA. 62+79.87
 STA. 65+76.50 TO STA. 66+55.00
 SB: STA. 61+80.00 TO STA. 62+49.07
 STA. 65+76.50 TO STA. 66+04.00

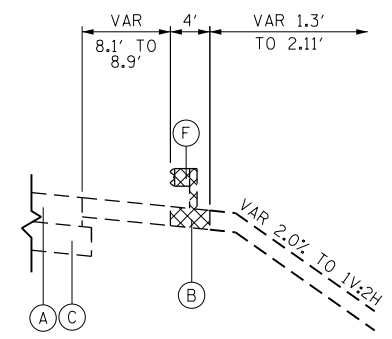
EXISTING LEGEND

- (A) EXISTING PORTLAND CEMENT CONCRETE PAVEMENT
- (B) EXISTING HMA SHOULDERS
- (C) EXISTING AGGREGATE SUBGRADE
- (D) EXISTING COMB. CONCRETE CURB AND GUTTER
- (E) EXISTING CONCRETE MEDIAN SURFACE
- (F) EXISTING STEEL PLATE BEAM GUARDRAIL
- (G) EXISTING TOP SOIL
- (H) EXISTING BRIDGE APPROACH SLAB
- (I) EXISTING AGGREGATE SHOULDERS
- [Hatched Box] REMOVAL ITEMS



EXISTING MEDIAN TYPICAL SECTION

STA. 52+27.00 TO STA. 62+49.07
 STA. 65+76.50 TO STA. 75+04.00

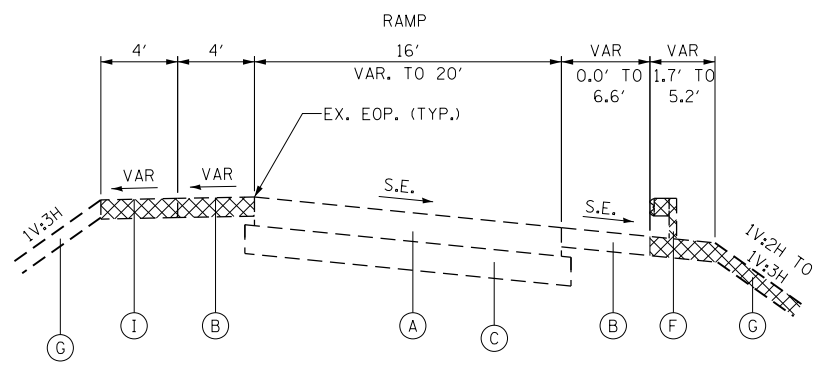


EXISTING COUNTY LINE ROAD TYPICAL SECTION

STA. 58+82.98 TO STA. 61+10.23

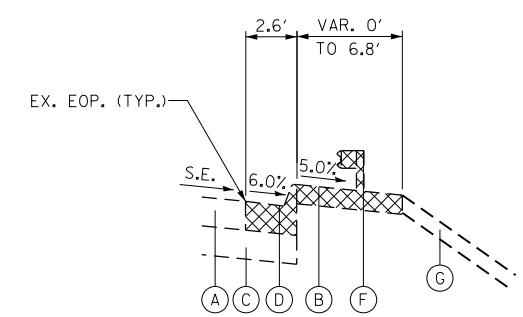
**IDOT DISTRICT ONE
 HOT-MIX ASPHALT MIXTURE REQUIREMENTS**

MIXTURE TYPE	AIR VOIDS @ NDES
STABILIZED SUBBASE	
STABILIZED SUBBASE-HOT-MIX ASPHALT, BAM, 4 1/2"	2% @ 30 GYR
TEMPORARY PAVEMENT, 10 1/4"	
HOT-MIX ASPHALT SURFACE COURSE, MIX "D", N50 (IL 9.5MM); 2"	4% @ 50 GYR
HOT-MIX ASPHALT BINDER COURSE, IL-19MM, N50, 8 1/4"	4% @ 50 GYR
TEMPORARY PAVED SHOULDER, 8"	
HOT-MIX ASPHALT SHOULDER (HMA BINDER IL-19mm)	4% @ 50 GYR



EXISTING RAMP TYPICAL SECTION

RAMP B: STA. 201+97.87 TO STA. 203+09.90
 RAMP E: STA. 400+04.63 TO STA. 401+13.46
 RAMP B: STA. 201+20.20 TO STA. 201+94.92
 RAMP C: STA. 301+35.04 TO STA. 304+27.57
 RAMP E: STA. 400+86.39 TO STA. 401+99.07
 RAMP F: STA. 100+82.08 TO STA. 103+78.89



EXISTING COUNTY LINE ROAD TYPICAL SECTION

STA. 61+18.87 TO STA. 61+80.00 LT
 STA. 61+64.36 TO STA. 62+00.00 RT
 STA. 66+04.00 TO STA. 66+65.06 LT
 STA. 66+55.00 TO STA. 67+11.71 RT

NOTES:

1. THE UNIT WEIGHT USED TO CALCULATE HOT-MIX ASPHALT MIXTURES IS 112 LBS/50 YD/IN.
2. THE "AC TYPE" FOR POLYMERIZED HMA MIXES SHALL BE "SBS/SBR PG 76-22" AND FOR NON-POLYMERIZED HMA THE "AC TYPE" SHALL BE "PG 64-22" UNLESS MODIFIED BY DISTRICT ONE SPECIAL PROVISIONS. FOR USE OF RECYCLED MATERIALS SEE SPECIAL PROVISIONS.
3. IF THE CONTRACTOR CHOOSES TO USE PCC TEMPORARY PAVEMENT, THE THICKNESS WILL BE PORTLAND CEMENT CONCRETE PAVEMENT 8" (JOINTED).
4. PCC TEMPORARY PAVEMENT SHALL CONSIST OF CLASS PV CONCRETE MEETING THE REQUIREMENTS OF ART. 1020 OF THE STANDARD SPECIFICATIONS.
5. PCC TEMPORARY PAVEMENT DOES NOT REQUIRE DOWEL BARS.

FILE NAME = SA\JUL\63800-6399\6346\028\Microa\CA000_Sheets\0160677-sh-typical.dgn



1170 SOUTH HOUBOLT ROAD
 JOLIET, ILLINOIS 60431
 (815) 744-4200

USER NAME = dennisw
 MODEL NAME = Default
 PLOT SCALE = 10.0000 "/in.
 PLOT DATE = 2/6/2013
 DESIGNED - MAG
 DRAWN - DJW
 CHECKED - DWG
 DATE - 01-24-13
 REVISED -
 REVISED -
 REVISED -
 REVISED -

**STATE OF ILLINOIS
 DEPARTMENT OF TRANSPORTATION**

TYPICAL SECTIONS

SCALE: NTS SHEET 1 OF 2 SHEETS STA. TO STA.

F.A.I. RTE.	SECTION	COUNTY	TOTAL SHEETS	SHEET NO.
55	22-1HB-R	COOK/DUPAGE	161	21

CONTRACT NO. 60K77
 ILLINOIS FED. AID PROJECT