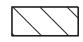



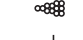






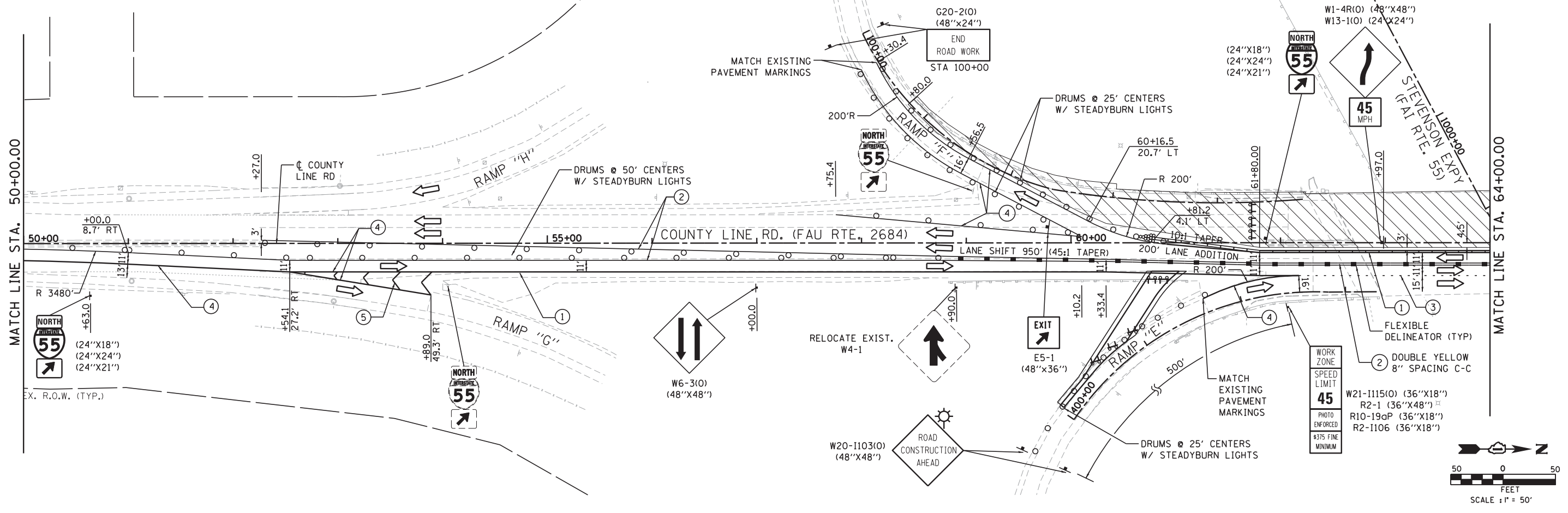
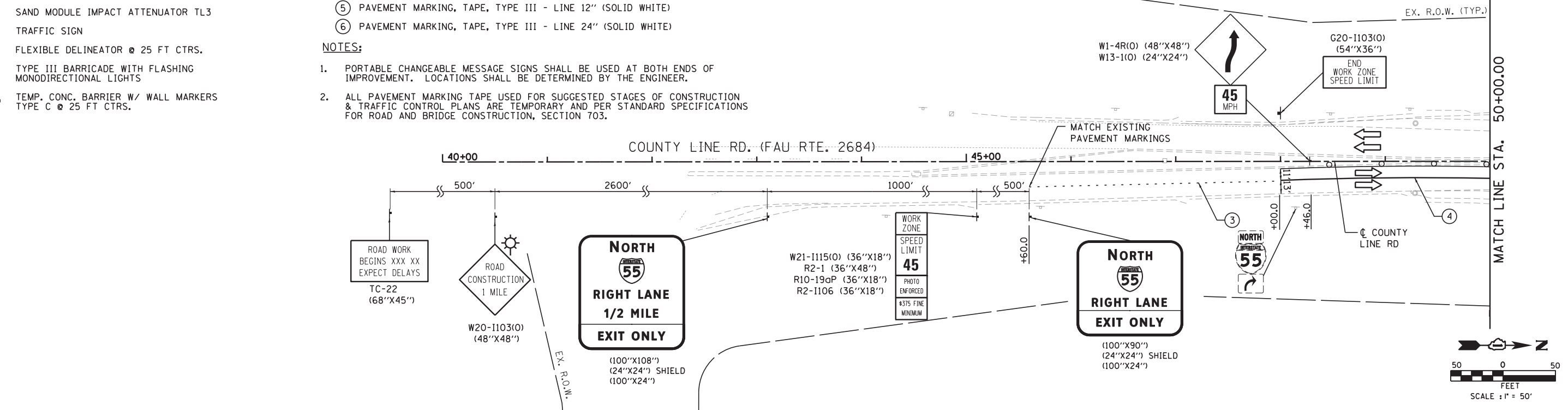
LEGEND

-  WORK ZONE
-  DIRECTION OF TRAFFIC
-  PLASTIC DRUMS WITH STEADY BURN MONO-DIRECTIONAL LIGHTS, SPACING AS SHOWN
-  ARROW BOARD
-  SAND MODULE IMPACT ATTENUATOR TL3
-  TRAFFIC SIGN
-  FLEXIBLE DELINEATOR @ 25 FT CTRS.
-  TYPE III BARRICADE WITH FLASHING MONODIRECTIONAL LIGHTS
-  TEMP. CONC. BARRIER W/ WALL MARKERS TYPE C @ 25 FT CTRS.

- ① PAVEMENT MARKING TAPE, TYPE III - LINE 4" (SOLID WHITE)
- ② PAVEMENT MARKING TAPE, TYPE III - LINE 4" (SOLID YELLOW)
- ③ PAVEMENT MARKING TAPE, TYPE III - LINE 6" (SKIP-DASH WHITE, 6' SKIP - 2' DASH)
- ④ PAVEMENT MARKING TAPE, TYPE III - LINE 8" (SOLID WHITE)
- ⑤ PAVEMENT MARKING TAPE, TYPE III - LINE 12" (SOLID WHITE)
- ⑥ PAVEMENT MARKING TAPE, TYPE III - LINE 24" (SOLID WHITE)

NOTES:

1. PORTABLE CHANGEABLE MESSAGE SIGNS SHALL BE USED AT BOTH ENDS OF IMPROVEMENT. LOCATIONS SHALL BE DETERMINED BY THE ENGINEER.
2. ALL PAVEMENT MARKING TAPE USED FOR SUGGESTED STAGES OF CONSTRUCTION & TRAFFIC CONTROL PLANS ARE TEMPORARY AND PER STANDARD SPECIFICATIONS FOR ROAD AND BRIDGE CONSTRUCTION, SECTION 703.



FILE NAME = J:\280\DOWN\CADD Sheets\Civil\1160677-SHT09-STAGING.dgn



USER NAME = vpelegrinos	DESIGNED - VP	REVISED -
DRAWN - VP	REVISOR -	
PLOT SCALE = 50.0000' / in.	CHECKED - IY	REVISOR -
PLOT DATE = 1/23/2013	DATE - 1/24/2013	REVISOR -

**STATE OF ILLINOIS
DEPARTMENT OF TRANSPORTATION**

SUGGESTED STAGES OF CONSTRUCTION AND TRAFFIC CONTROL COUNTY LINE ROAD - STAGE 1		
SCALE: 1"=50'	SHEET NO. 9 OF 16 SHEETS	STA. 40+00.00 TO STA. 64+00.00

F.A.I. RTE. = 55	SECTION = 22-1HB-R	COUNTY = COOK/DUPAGE	TOTAL SHEETS = 161	SHEET NO. = 39
CONTRACT NO. 60K77				
FED. ROAD, DIST. NO. 1 ILLINOIS FED. AID PROJECT				