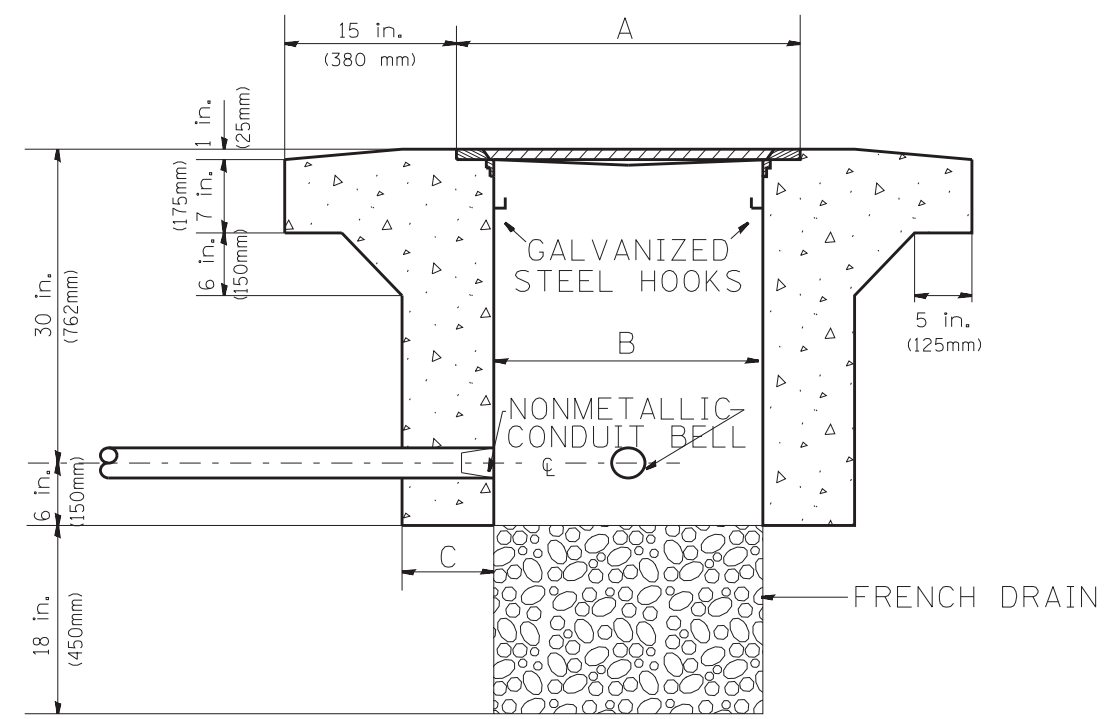


PLAN

HEAVY DUTY HANDHOLE MINIMUM DIMENSIONS (UNHINGED)

A	28" (711 mm)
B	22" (559 mm)
C	8" (200 mm)

(FRAME AND COVER 260 LBS. (118 Kg.) MIN.)



ELEVATION

HEAVY DUTY HANDHOLE SPECIAL MINIMUM DIMENSIONS

A	31.5" (800 mm)
B	30.0" (762 mm)
C	10.0" (250 mm)

(FRAME AND COVER 405 LBS. (184 Kg. (405))

PC CONCRETE - HEAVY DUTY HAND HOLE

FILE NAME =	USER NAME = mezag	DESIGNED - R.L.	REVISED - 04/97	STATE OF ILLINOIS DEPARTMENT OF TRANSPORTATION TRAFFIC SYSTEMS CENTER	PC CONCRETE - HEAVY DUTY HAND HOLE			F.A. I. RTE.	SECTION	COUNTY	TOTAL SHEETS	SHEET NO.	
et:\pw\work\pidot\mezag\d0287541\TSCYP.dgn		DRAWN - G.M.	REVISED -		SCALE: NONE	SHEET NO.	OF SHEETS	STA.	TO STA.	55	22-1HB-R	161	81
PLOT SCALE = 100.0000' / 1"		CHECKED - R.L.	REVISED -		CONTRACT NO.			FED. ROAD DIST. NO. ILLINOIS FED. AID PROJECT					
PLOT DATE = 1/23/2013		DATE - 09/11/96	REVISED -		TRAFFIC SYSTEMS CENTER (TY-1TSC-400#15)								