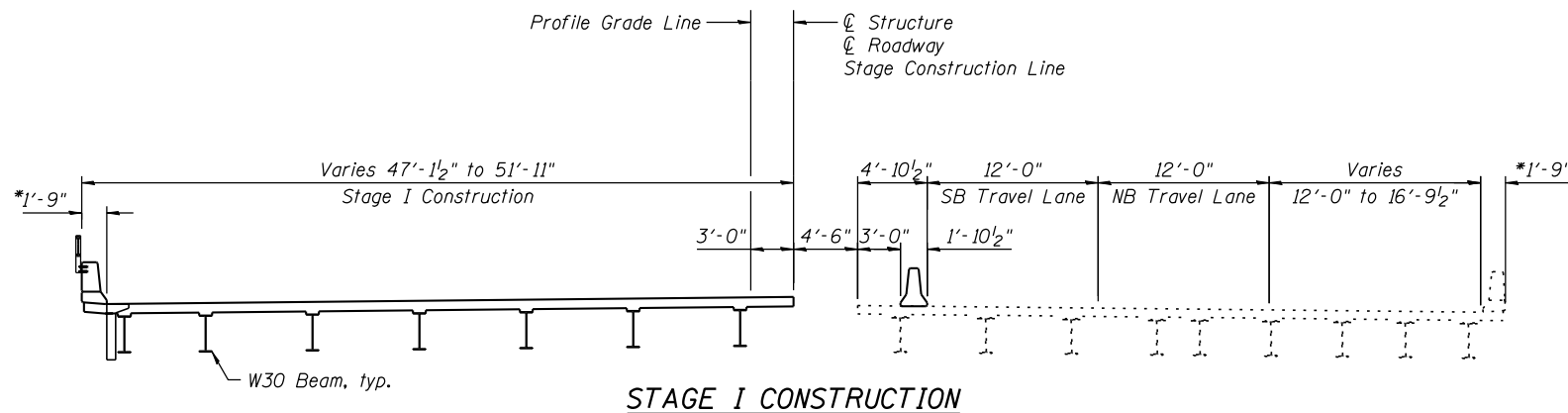
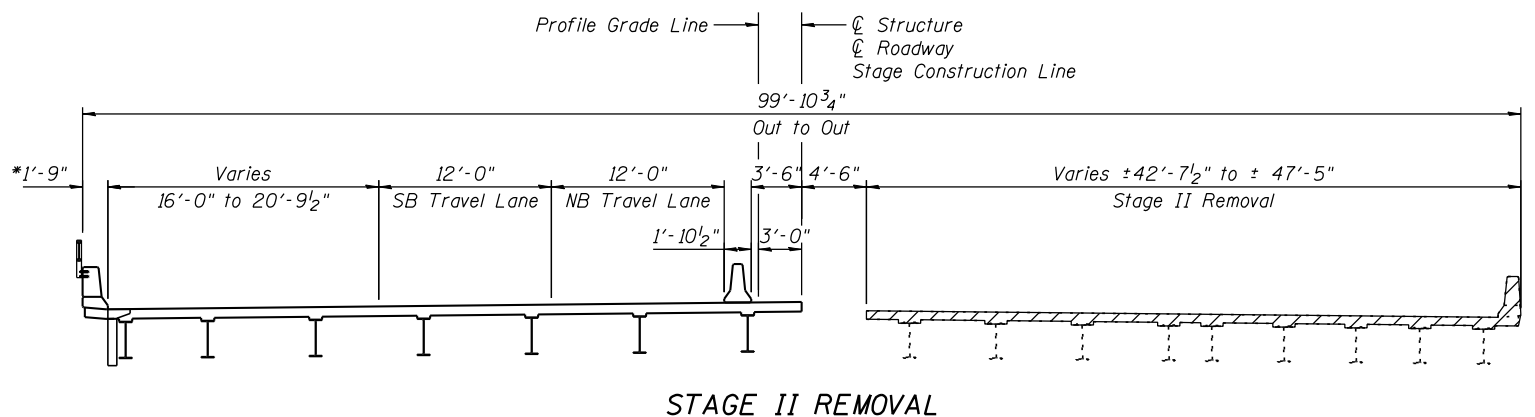


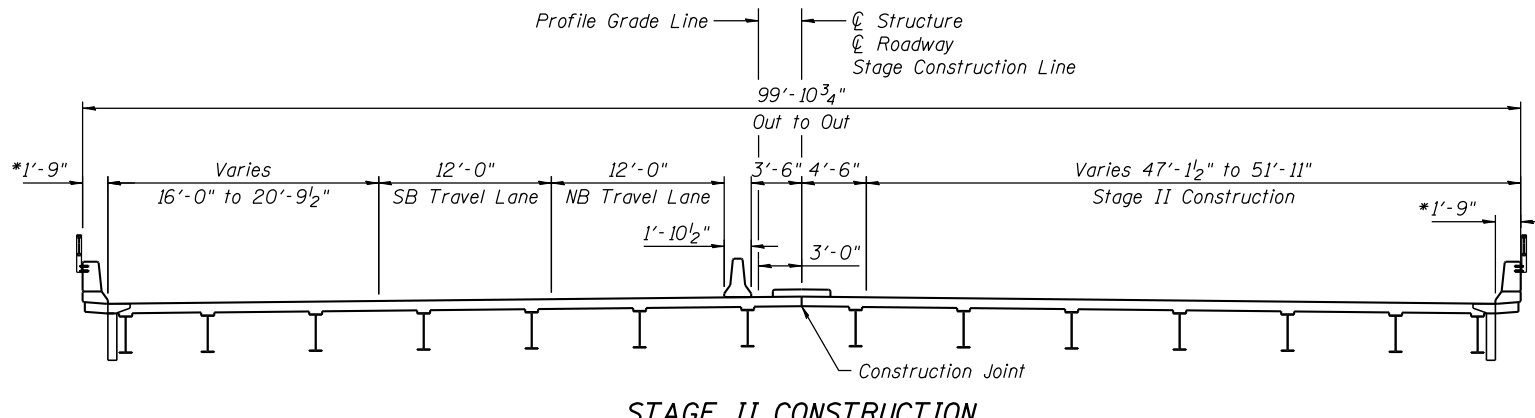
STAGE I REMOVAL



STAGE I CONSTRUCTION



STAGE II REMOVAL



STAGE II CONSTRUCTION

LEGEND

Removal of Existing Superstructures

*At right L's to parapet

Notes:

All dimensions are at Right L's to $\text{\textcircled{C}}$ Roadway unless otherwise noted.

All staging cross sections are looking North.

Removal of Existing Wearing Surface, Expansion Joints, Existing Permanent Protective Shield System and Abandoned Utility and Conduit are included in the cost of Removal of Existing Superstructures.

The existing deck contains a cathodic protection system, which is to be salvaged. The system and its appurtenances shall be disabled and removed. This includes but is not limited to disconnection the ComED power, removing service installation and removing existing rectifier cabinet. The cost of this work shall be included with Removal of Existing Superstructures.

For quantity of Temporary Concrete Barrier, see Roadway Plans

STATION 1086+05
RE-BUILT 20XX BY
STATE OF ILLINOIS
F.A.I. RT 55 SEC. 22-1HB-R
LOADING HL-93
STRUCTURE NO. 016-0587

Existing Name Plate shall be cleaned and relocated next to new Name Plate. Cost included with Name Plates.

NAME PLATE

See Std. 515001

TOTAL BILL OF MATERIAL

ITEM	UNIT	SUPER	SUB	TOTAL
Removal Of Existing Superstructures	Each	1		1
Concrete Removal	Cu Yd		200	200
Slope Wall Removal	Sq Yd		90	90
Protective Shield	Sq Yd	1,990		1,990
Structure Excavation	Cu Yd		400	400
Concrete Structures	Cu Yd		165	165
Concrete Superstructure	Cu Yd	1,282		1,282
Bridge Deck Grooving	Sq Yd	3,517		3,517
Concrete Encasement	Cu Yd		12	12
Form Liner Textured Surface	Sq Ft	2,383		2,383
Protective Coat	Sq Yd	4,165		4,165
Furnishing And Erecting Structural Steel	L Sum	1		1
Stud Shear Connectors	Each	22,290		22,290
Reinforcement Bars, Epoxy Coated	Pound	314,450	31,160	345,610
Bar Splicers	Each	1,440	76	1,516
Slope Wall 4 Inch	Sq Yd		259	259
Furnishing Steel Piles HP 12x53	Foot		1,936	1,936
Driving Piles	Foot		1,936	1,936
Test Pile Steel HPI2x53	Each		2	2
Name Plates	Each		1	1
Elastomeric Bearing Assembly, Type I	Each		28	28
Anchor Bolts, 1"	Each		140	140
Concrete Sealer	Sq Ft		97	97
Epoxy Crack Injection	Foot		446	446
Geocomposite Wall Drain	Sq Yd		195	195
Porous Granular Embankment, Special	Cu Yd		400	400
Parapet Railing, Special	Foot	650		650
Staining Concrete Structures	Sq Yd	265		265
Ornamental Metal Panel	Each	2		2
Structural Repair Of Concrete (Depth Equal or Less Than 5 Inches)	Sq Ft		1,010	1,010
Structural Repair Of Concrete (Depth Greater Than 5 Inches)	Sq Ft		60	60
Drainage Scuppers, DS-11	Each	8		8
Drainage System	L Sum	1		1
Temporary Sheet Piling	Sq Ft		417	417
Pipe Underdrains For Structures 4"	Foot		352	352
Slope Wall Repair	Sq Yd		10	10

FILE NAME = s:\p1\6380--6395\6346\028\micro\cadd sheets\structural\0160587-60K77-002-00.dgn

SA STRAND ASSOCIATES
1170 SOUTH HOUBOLT ROAD
JOLIET, ILLINOIS 60431
(815) 744-4200
IDFPR NO. 184-001273

USER NAME = brianf
DESIGNED - RRD
CHECKED - AJA
DRAWN - BJF
CHECKED - RRD
PLOT SCALE =
PLOT DATE = 1/29/2013

DESIGNED - RRD
CHECKED - AJA
DRAWN - BJF
CHECKED - RRD
REVISED
REVISED
REVISED
REVISED

**STATE OF ILLINOIS
DEPARTMENT OF TRANSPORTATION**

**GENERAL DETAILS (SHEET 1 OF 2)
STRUCTURE NO. 016-0587**

SHEET NO. 2 OF 42 SHEETS

F.A.I. RTE.	SECTION	COUNTY	TOTAL SHEETS	SHEET NO.
55	22-1HB-R	COOK/DUPAGE	161	90
				CONTRACT NO. 60K77
ILLINOIS FED. AID PROJECT				