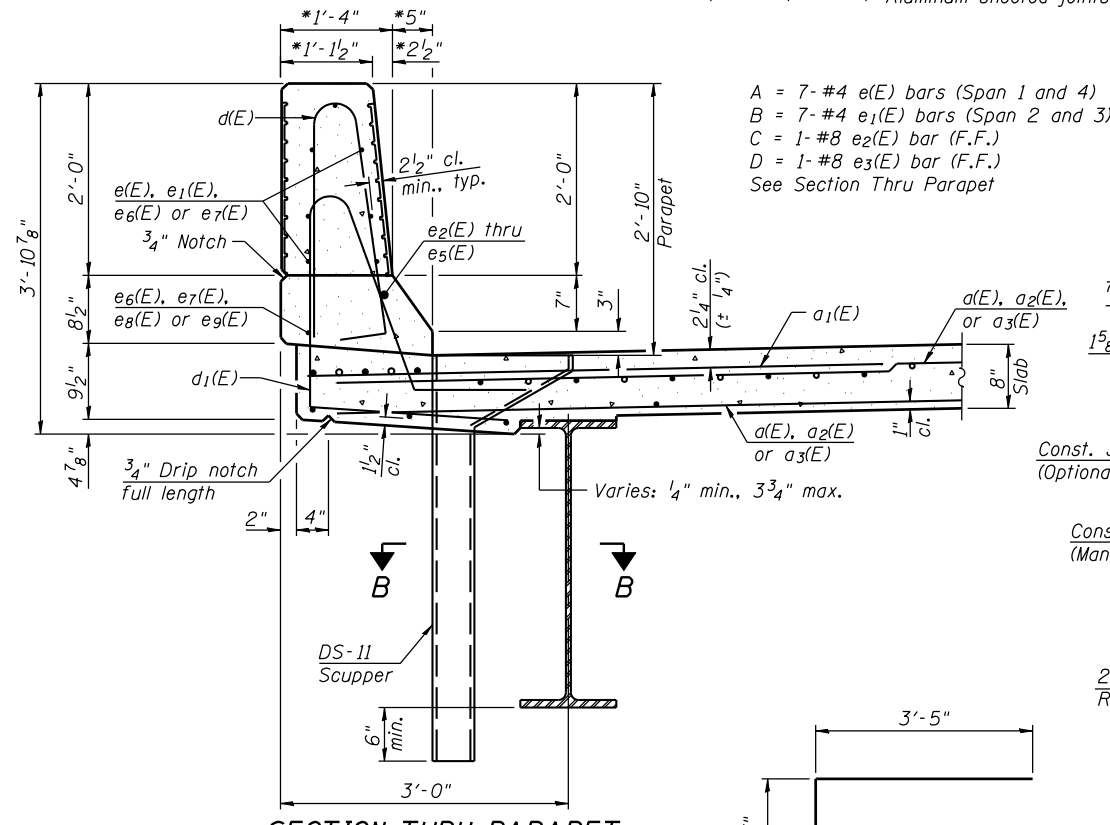


Notes:
Reinforcement bars shall not pass thru aluminum sheets and cork joint filler.
All dimensions are along front face of parapet.

INSIDE ELEVATION OF PARAPET

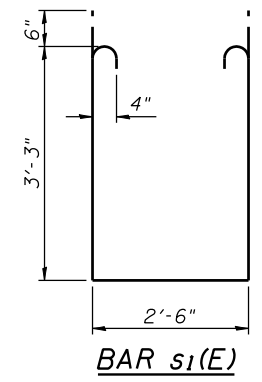


SECTION THRU PARAPET

*At Right L's to Parapet

PARAPET JOINT DETAILS

BAR v(E)



BAR c₂(E)

BAR d(E)

BAR d₁(E)

BAR s(E)

BAR s₁(E)

MINIMUM BAR LAP

(Parapet)
#4 bar = 2'-0"
#8 bar = 5'-2"

FIELD CUTTING DIAGRAM

Order d(E) bars full length. Cut as shown and use remainder of bars in opposite corner of the deck.

FIELD CUTTING DIAGRAM

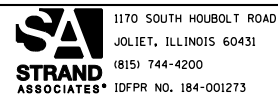
Order a₃(E) bars full length. Cut as shown and use remainder of bars in opposite corner of the deck.

SUPERSTRUCTURE BILL OF MATERIAL

Bar	No.	Size	Length	Shape
a(E)	87	#5	47'-11"	—
a ₁ (E)	1,302	#6	6'-6"	—
a ₂ (E)	3,808	#5	27'-4"	—
a ₃ (E)	96	#5	51'-10"	—
a ₄ (E)	8	#5	30'-10"	—
a ₅ (E)	8	#5	28'-1"	—
a ₆ (E)	64	#5	1'-6"	—
b(E)	1,228	#5	27'-10"	—
b ₁ (E)	204	#6	42'-2"	—
b ₂ (E)	1,378	#5	24'-4"	—
b ₃ (E)	102	#6	46'-8"	—
c ₂ (E)	598	#5	4'-0"	└
d(E)	644	#5	5'-7"	└
d ₁ (E)	644	#5	7'-7"	└
e(E)	84	#4	14'-4"	—
e ₁ (E)	112	#4	16'-5"	—
e ₂ (E)	8	#8	11'-2"	—
e ₃ (E)	4	#8	13'-4"	—
e ₄ (E)	12	#8	18'-2"	—
e ₅ (E)	16	#8	20'-8"	—
e ₆ (E)	64	#4	11'-2"	—
e ₇ (E)	32	#4	13'-4"	—
e ₈ (E)	12	#4	16'-1"	—
e ₉ (E)	16	#4	18'-4"	—
m(E)	20	#6	30'-11"	—
m ₁ (E)	20	#6	28'-3"	—
m ₂ (E)	48	#6	11'-7"	—
m ₃ (E)	22	#6	6'-9"	—
m ₄ (E)	6	#6	1'-8"	—
m ₅ (E)	4	#6	10'-11"	—
m ₆ (E)	2	#6	7'-1"	—
m ₇ (E)	4	#6	4'-9"	—
s(E)	210	#5	6'-10"	└
s ₁ (E)	162	#4	9'-9"	└
v(E)	226	#5	3'-9"	└
Reinforcement Bars, Epoxy Coated		Pound	244,810	
Concrete Superstructure		Cu. Yds.	963	

Bars indicated thus 1 x 4- #5 etc. indicates 1 line of bars with 4 lengths per line.

FILE NAME = s:\p1\6300--6399\6346\028\micro\cadd sheets\struc\0160887-60K77-013-SUPDET.dgn



1170 SOUTH HOUBOLT ROAD
JOLIET, ILLINOIS 60431
(815) 744-4200
IDFPR NO. 184-001273

USER NAME = brianf
DESIGNED - RRD
CHECKED - AJS
DRAWN - BJF
CHECKED - RRD
PLOT SCALE =
PLOT DATE = 1/29/2013

REVISOR
REVISOR
REVISOR
REVISOR

STATE OF ILLINOIS DEPARTMENT OF TRANSPORTATION

SUPERSTRUCTURE DETAILS STRUCTURE NO. 016-0587

SHEET NO. 14 OF 42 SHEETS

F.A.I. RTE.	SECTION	COUNTY	TOTAL SHEETS	SHEET NO.
55	22-IHB-R	COOK/DUPAGE	161	102
CONTRACT NO. 60K77				

ILLINOIS FED. AID PROJECT