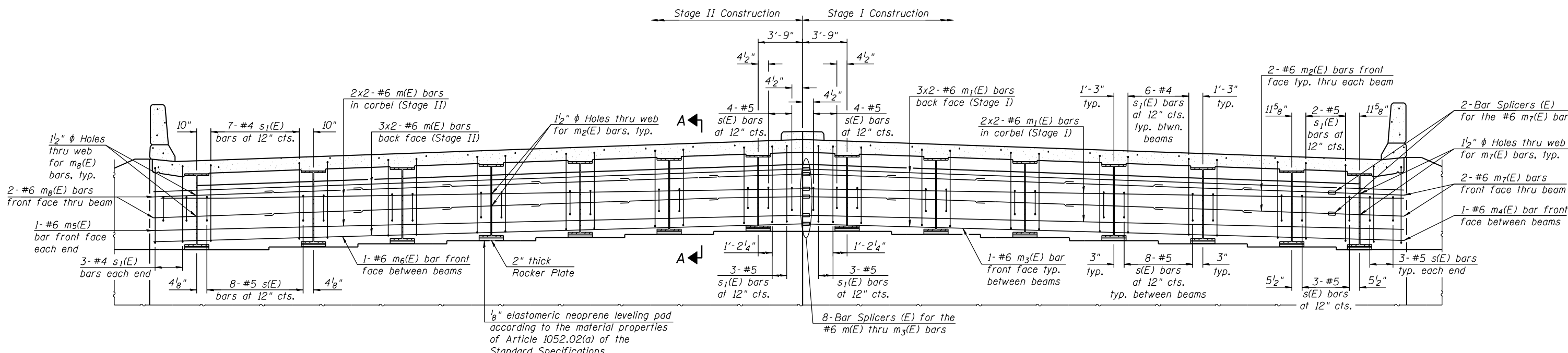


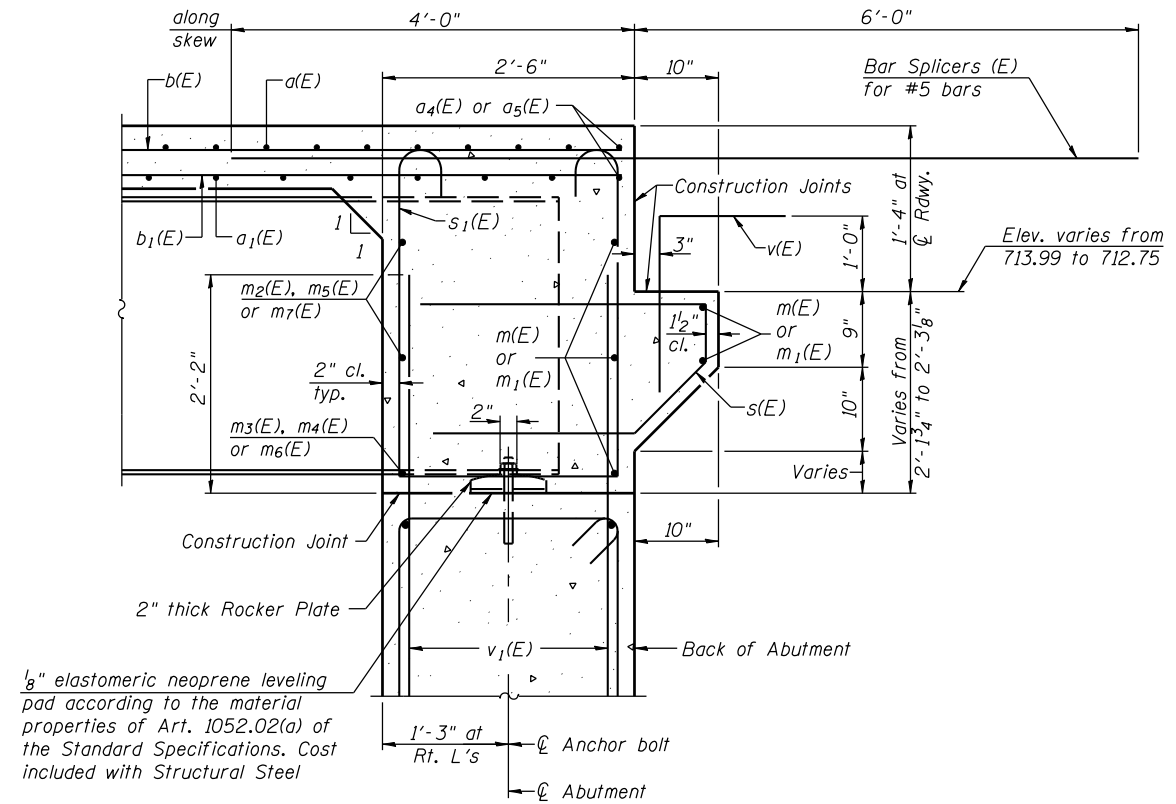
FILE NAME = s:\p\16300--6395\6346\028\micro\cadd sheets\structural\0160887-60K77-014-DIA.dgn



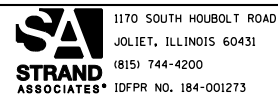
DIAPHRAGM ELEVATION AT ABUTMENT
 (South Diaphragm looking South)
 (North Diaphragm Similar)

Notes:
 Bars indicated thus 20x3 etc. indicates 20 lines of bars with 3 lengths per line.
 Reinforcement bars in diaphragm are billed with Superstructure on Sheet 14 of 42.
 Concrete in diaphragm is included with Concrete Superstructure on Sheet 14 of 42.
 For details of bars s(E) & s1(E) see Sheet 14 of 42.
 The s(E) and s1(E) bars shall be placed parallel to the beams. Spacing for these bars shall be at right angles to the beams.

MIN. BAR LAP
 #6 bar = 3'-4"



SECTION A-A
 Dimensions at right angles to abutment, except as shown.



USER NAME = brianf	DESIGNED - KAT	REVISED
PLOT SCALE =	CHECKED - AJ5	REVISED
PLOT DATE = 1/29/2013	DRAWN - BJF	REVISED
	CHECKED - RRD	REVISED

STATE OF ILLINOIS
DEPARTMENT OF TRANSPORTATION

INTEGRAL ABUTMENT DIAPHRAGM DETAILS
STRUCTURE NO. 016-0587

F.A.I. RTE. = 55	SECTION = 22-1HB-R	COUNTY = COOK/DUPAGE	TOTAL SHEETS = 161	SHEET NO. = 103
CONTRACT NO. 60K77				

SHEET NO. 15 OF 42 SHEETS

ILLINOIS FED. AID PROJECT