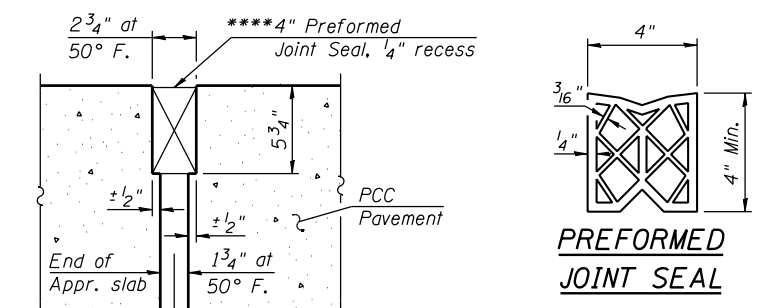
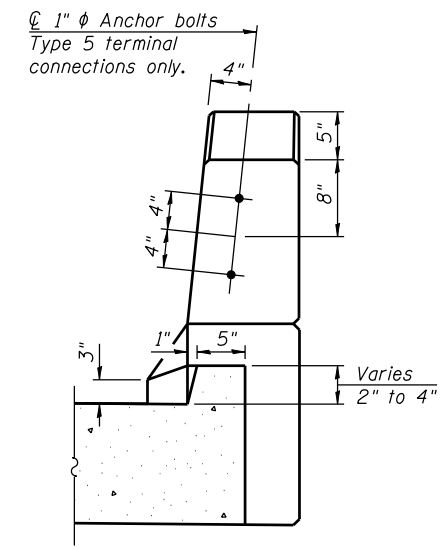


Notes:
 See Sheet 16 of 42 for Sections C-C & D-D and View E-E.
 $a_{10}(E)$, $a_{11}(E)$, $a_{12}(E)$, $a_{13}(E)$, $a_{15}(E)$ and $a_{16}(E)$ bar spacings measured along \varnothing Rdwy.
 See Sheet 18 of 39 for bar bending diagram.
 Bars indicated thus 20x3-#5 etc. indicates 20 lines of bars with 3 lengths per line.

**** Cost included with Concrete Superstructure.

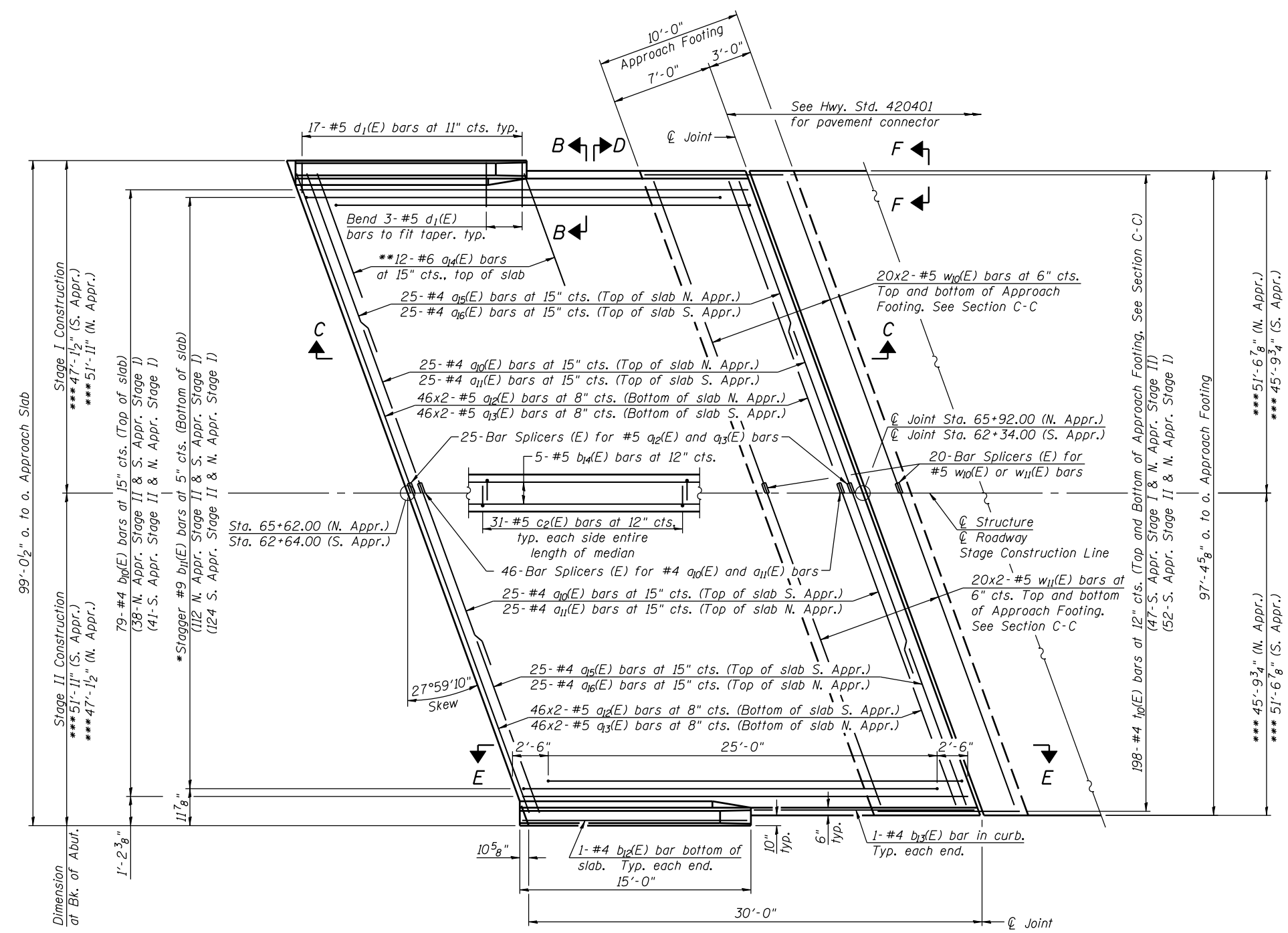


DETAIL A
 RIGID PAVEMENT



VIEW B-B

MIN. BAR LAP
 #4 = 2'-11"
 #5 = 3'-3"



PLAN
 North Approach Slab shown
 (South Approach Slab similar)

* Tilt #9 $b_{11}(E)$ bars as required to maintain clearance.
 ** Space between $a_{15}(E)$ or $a_{16}(E)$ bars, typ. each parapet.
 *** At right L's to \varnothing Roadway.

FILE NAME = s:\p1\6380--6395\6346\028\micro\cadd sheets\structural\0168887-68K77-017-BAP.dgn

BA-R 7-1-10



1170 SOUTH HOUBOLT ROAD
 JOLIET, ILLINOIS 60431
 (815) 744-4200
 IDFPN NO. 184-001273

USER NAME = brianf	DESIGNED - RRD	REVISED
PLOT SCALE =	CHECKED - AJS	REVISED
PLOT DATE = 1/29/2013	DRAWN - BJF	REVISED
	CHECKED - RRD	REVISED

STATE OF ILLINOIS
DEPARTMENT OF TRANSPORTATION

BRIDGE APPROACH SLAB DETAILS (1 OF 2)
STRUCTURE NO. 016-0587

SHEET NO. 18 OF 42 SHEETS

F.A.I. RTE.	SECTION	COUNTY	TOTAL SHEETS	SHEET NO.
55	22-1HB-R	COOK/DUPAGE	161	106
CONTRACT NO. 60K77				

ILLINOIS FED. AID PROJECT