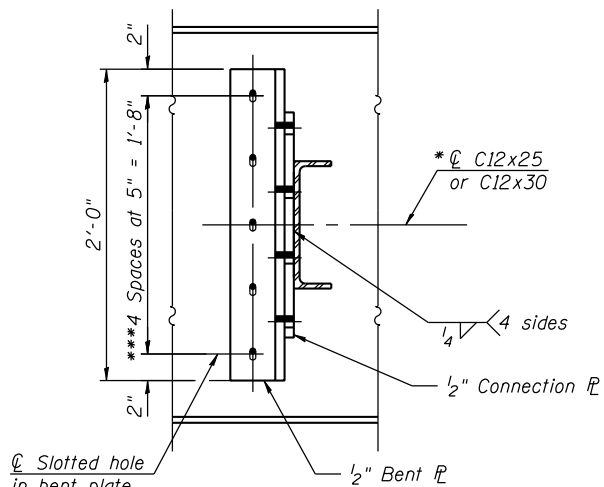
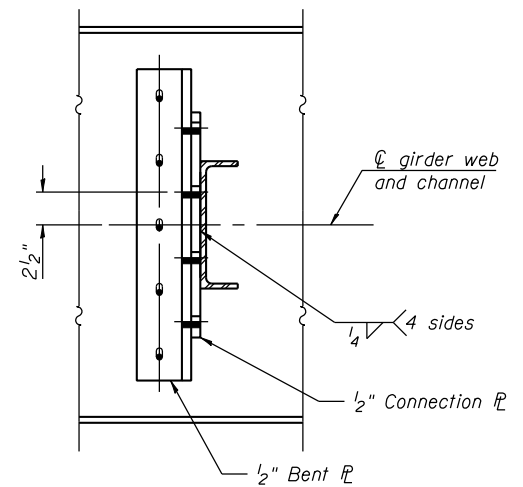


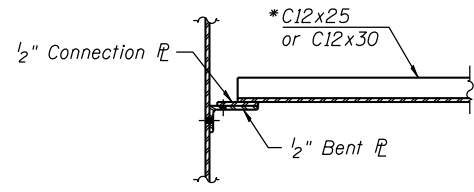
**INITIAL BOLT  
ERECTION POSITION**



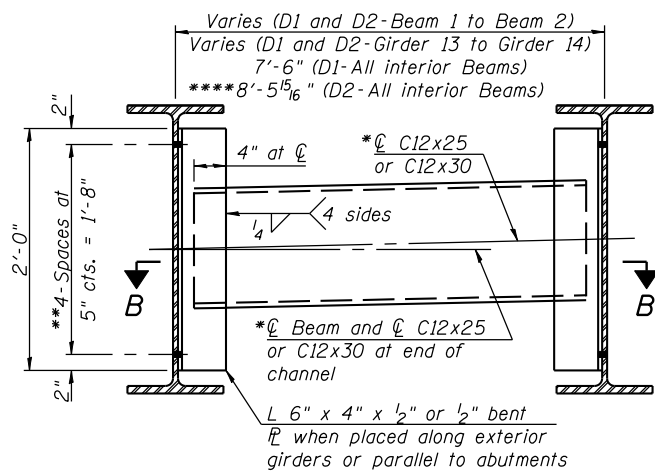
**INITIAL BOLT  
ERECTION POSITION**  
**INTERIOR DIAPHRAGM 'D'**  
(West Side Girder 8)



**FINAL ERECTION POSITION  
AFTER STAGE II DECK POUR**



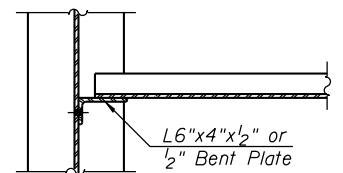
**SECTION A-A (D2)**



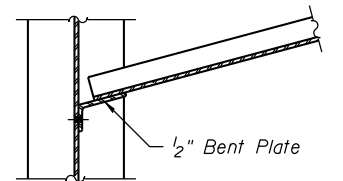
**INTERIOR DIAPHRAGM**  
(Except West side of Girder 8)

Note:  
Two hardened washers required for each set of oversized holes.

\*Alternate channels are permitted to facilitate material acquisition. Calculated weight of structural steel is based on the lighter section. The alternate, if utilized, shall be provided at no additional cost to the Department.  
 \*\*3/4" φ HS bolts, 1 5/16" φ holes  
 \*\*\*3/4" φ HS bolts, on the west side of Girder 8 provide 1 3/16" x 1 7/8" vertical slotted holes in the bent plate at the web and in the connection plate. Bolts in slotted holes shall be finger tightened until the second stage pour is completed. Position slots so bolts move from one end with no concrete load to the opposite end under the deck load. The slotted holes in the bent plate and connection plate shall be positioned as shown to allow the bolts to move to the final erection positions under deck load. The holes shall be positioned to allow maximum bolt displacement without laterally stressing the girders.  
 \*\*\*\*Measured along Diaphragm (Parallel to abutments)



**SECTION B-B (D1)**



**SECTION B-B (D2)**

FILE NAME = s:\p1\6380--6395\6346\028\micro\cadd sheets\structural\0168587-60K77-022-BEAM.dgn