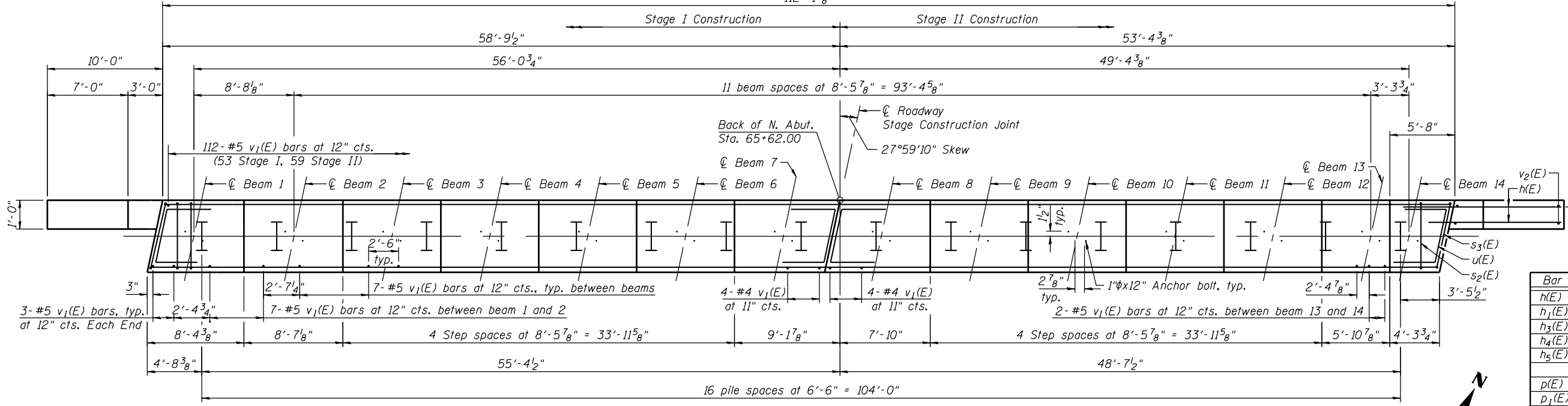
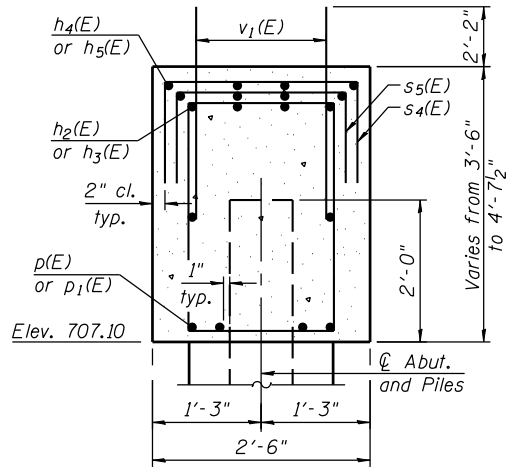


ELEVATION
(Looking North)
112'-1 7/8"

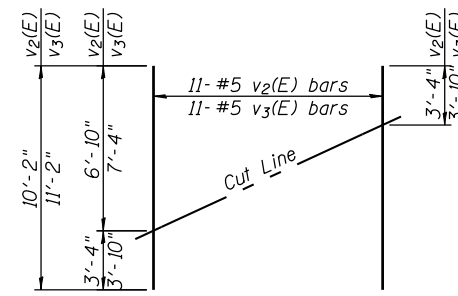


PLAN
16 pile spaces at 6'-6" = 104'-0"

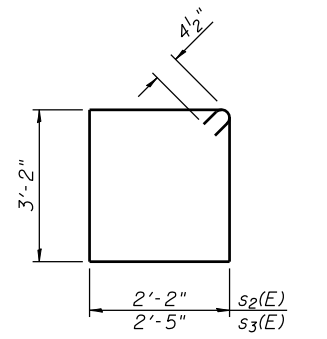
MIN. BAR LAP
#7 bar = 5'-2"



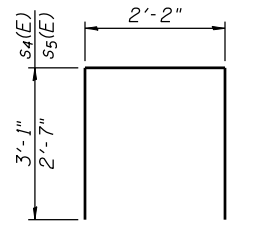
SECTION THRU ABUTMENT



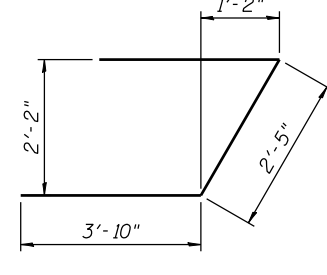
FIELD CUTTING DIAGRAM
Order v2(E) and v3(E) bars full length. Cut as shown and use remainder of bars in opposite face.



BARS s2(E) & s3(E)



BARS s4(E) & s5(E)



BAR u(E)

PILE DATA

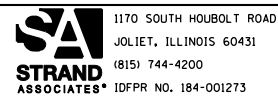
Type: Steel-HP 12x53
Nominal Required Bearing: 327 kips
Factored Resistance Available: 180 kips
Est. Length: 59 ft
No. Production Piles: 16
No. Test Piles: 1

Notes:
For details of Bar Splicers, see Sheet 36 of 42.
For details of piles and Concrete Encasement, see Sheet 35 of 42.
Pour Steps Monolithically with cap.
Space reinforcement in cap to miss anchor bolts.

BILL OF MATERIAL

Bar	No.	Size	Length	Shape
h(E)	32	#8	16'-7"	—
h1(E)	28	#6	13'-0"	—
h3(E)	4	#7	34'-3"	—
h4(E)	4	#7	25'-9"	—
h5(E)	4	#7	17'-3"	—
p(E)	28	#7	32'-0"	—
p1(E)	20	#7	29'-3"	—
s2(E)	101	#4	11'-5"	□
s3(E)	4	#4	11'-11"	□
s4(E)	38	#4	8'-4"	□
s5(E)	84	#4	7'-4"	□
u(E)	16	#6	10'-1"	└
v1(E)	205	#5	4'-4"	—
v2(E)	11	#5	10'-2"	—
v3(E)	11	#5	11'-2"	—
Structure Excavation			Cu. Yd.	200
Concrete Structures			Cu. Yd.	48
Reinforcement Bars, Epoxy Coated			Pound	8,470
Furnishing Steel Piles HPI2x53			Foot	992
Driving Piles			Foot	992
Test Pile Steel HPI2x53			Each	1
Concrete Encasement			Cu. Yd.	6

FILE NAME = s:\p1\6380--6395\6346\028\micro\cadd sheets\structural\0168587-60K77-025-NABUT.dgn



USER NAME = brianf
DESIGNED - KAT
CHECKED - RRD
DRAWN - BJF
CHECKED - RRD
PLOT SCALE =
PLOT DATE = 1/29/2013

DESIGNED - KAT
CHECKED - RRD
DRAWN - BJF
CHECKED - RRD

REVISED
REVISED
REVISED
REVISED

STATE OF ILLINOIS
DEPARTMENT OF TRANSPORTATION

NORTH ABUTMENT DETAILS
STRUCTURE NO. 016-0587
SHEET NO. 28 OF 42 SHEETS

F.A.I. RTE.	SECTION	COUNTY	TOTAL SHEETS	SHEET NO.
55	22-1HB-R	COOK/DUPAGE	161	116

CONTRACT NO. 60K77
ILLINOIS FED. AID PROJECT