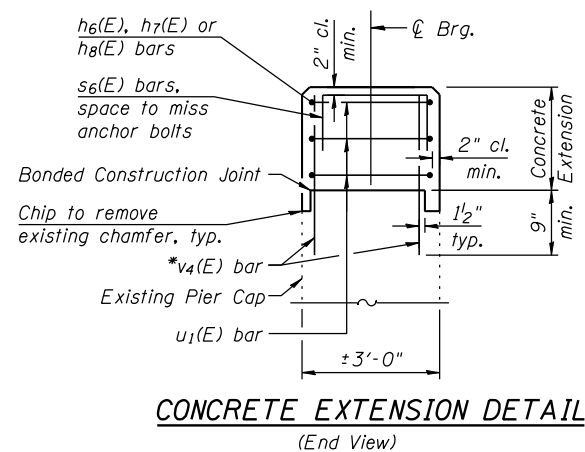
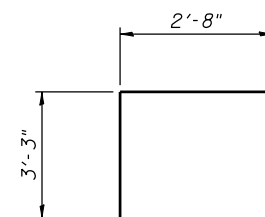


FILE NAME = s:\p1\6380--6395\6346\028\micro\cadd sheets\structural\0160887-60K77-029-PIER2.dgn

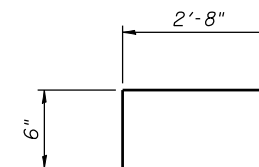


Note:
 Apply Concrete Sealer to the exposed faces of the last 10' of the pier cap concrete extension.

*Place bars in 9" min. drilled holes in the top of existing pier cap. Epoxy grout according to Section 584 of the Standard Specifications. Cost included with cost of Reinforcement Bars, Epoxy Coated.



BAR u₁(E)



BAR s₆(E)

PIER 2
BILL OF MATERIAL

Bar	No.	Size	Length	Shape
h ₆ (E)	20	#5	21'-0"	—
h ₇ (E)	8	#5	18'-6"	—
h ₈ (E)	4	#5	16'-7"	—
s ₆ (E)	112	#5	3'-8"	□
u ₁ (E)	10	#5	9'-2"	□
v ₄ (E)	224	#5	1'-10"	—
Concrete Structures		Cu. Yd.	1,620	
Concrete Sealer		Sq. Ft.	97	
Epoxy Crack Injection		Foot	13	
Structural Repair of Concrete (Depth Equal or Less Than 5 Inches)		Sq. Ft.	330	
Structural Repair of Concrete (Depth Greater Than 5 inches)		Sq. Ft.	20	