

LEGEND

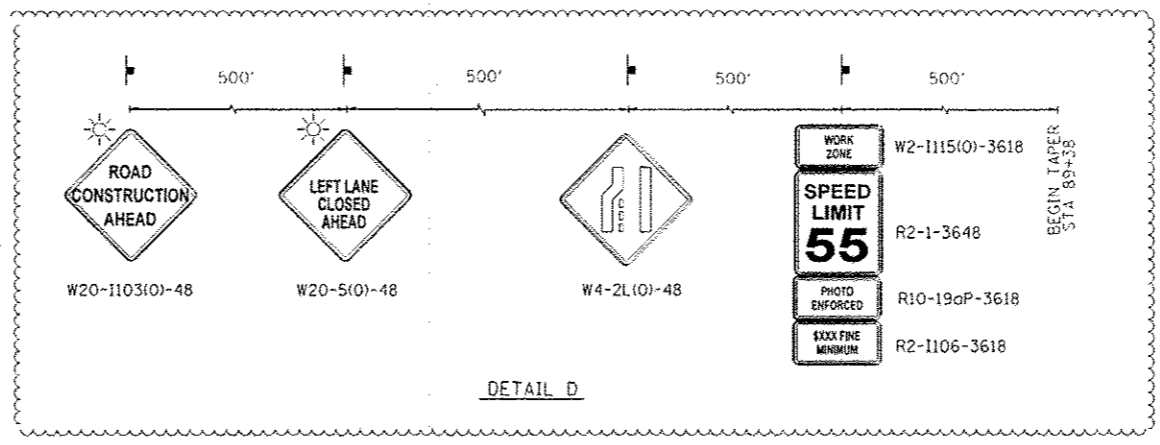
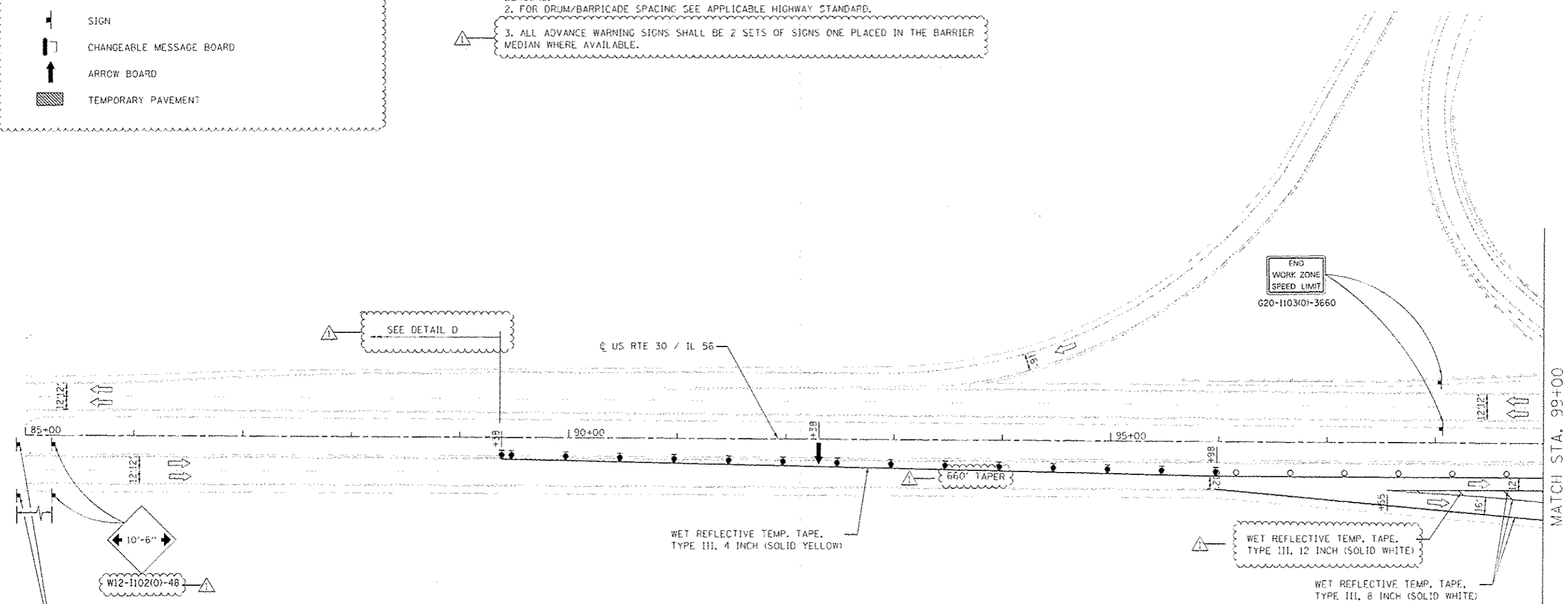
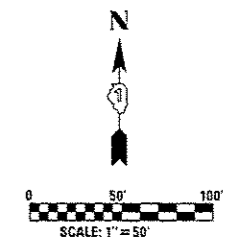
- WORK AREA
- IMPACT ATTENUATORS, TEMPORARY
- TEMPORARY CONCRETE BARRIER
- DRUM WITH STEADY BURN MONODIRECTIONAL LIGHT
- DIRECTION INDICATOR BARRICADE WITH STEADY BURN MONODIRECTIONAL LIGHT
- TYPE II BARRICADES OR DRUMS
- SIGN
- CHANGEABLE MESSAGE BOARD
- ARROW BOARD
- TEMPORARY PAVEMENT

STAGE II CONSTRUCTION:

1. CLOSE INSIDE LANES OF US ROUTE 30 / IL 56 AS SHOWN IN THE PLANS AND IN ACCORDANCE WITH HIGHWAY STANDARDS 701400-05, 701402-09, AND 701411-08.
2. PERFORM INSIDE LANE STRUCTURAL AND APPROACH REPAIRS AS SHOWN IN THE PLANS.
3. REMOVE TEMPORARY PAVEMENT PLACED IN STAGE I ALONG US ROUTE 30 / IL 56 IN ACCORDANCE WITH HIGHWAY STANDARD 701411-08.
4. APPLY PERMANENT PAVEMENT MARKINGS AND RAISED REFLECTIVE PAVEMENT MARKERS AS SHOWN IN THE PROPOSED PAVEMENT MARKING PLANS IN ACCORDANCE WITH HIGHWAY STANDARD 701426-04.

NOTES:

1. FIRST TWO WARNING SIGNS IN EACH DIRECTION REQUIRE MONO-DIRECTIONAL FLASHING BEACONS.
2. FOR DRUM/BARRICADE SPACING SEE APPLICABLE HIGHWAY STANDARD.
3. ALL ADVANCE WARNING SIGNS SHALL BE 2 SETS OF SIGNS ONE PLACED IN THE BARRIER MEDIAN WHERE AVAILABLE.



MAX WIDTH 10'-6" X MILES AHEAD
 W12-1103 48" X 48"

SIGNS TO BE PLACED WEST OF DUGAN ROAD



USER NAME - KUSER4	DESIGNED - SEW	REVISED - SL 8/30/2013
DRAWN - SEW	CHECKED - ST	REVISED -
DATE - 11/2011	DATE - 11/2011	REVISED -
PLOT SCALE -		
PLOT DATE - 9/7/2013		

STATE OF ILLINOIS
 DEPARTMENT OF TRANSPORTATION

MAINTENANCE OF TRAFFIC - STAGE II - US ROUTE 30 / IL 56
 US ROUTE 30 / IL 56 OVER IL 47

SCALE: 1"=50' SHEET NO. 1 OF 3 SHEETS STA. 85+00 TO STA. 99+00

F.A.P. R/L	SECTION	COUNTY	TOTAL SHEETS	SHEET NO.
573	61 HB-1-7	KANE	48	8
CONTRACT NO. 60N12				
FED. ROAD DIST. NO. ILLINOIS FED. AID PROJECT				