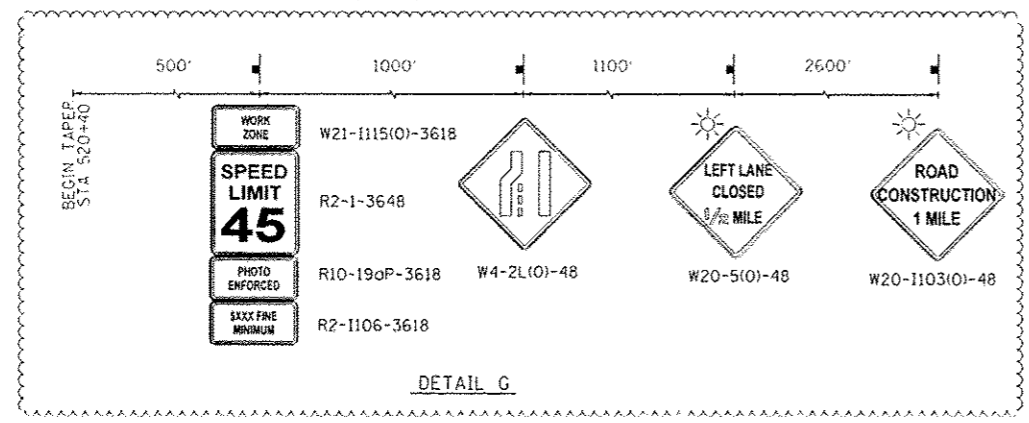
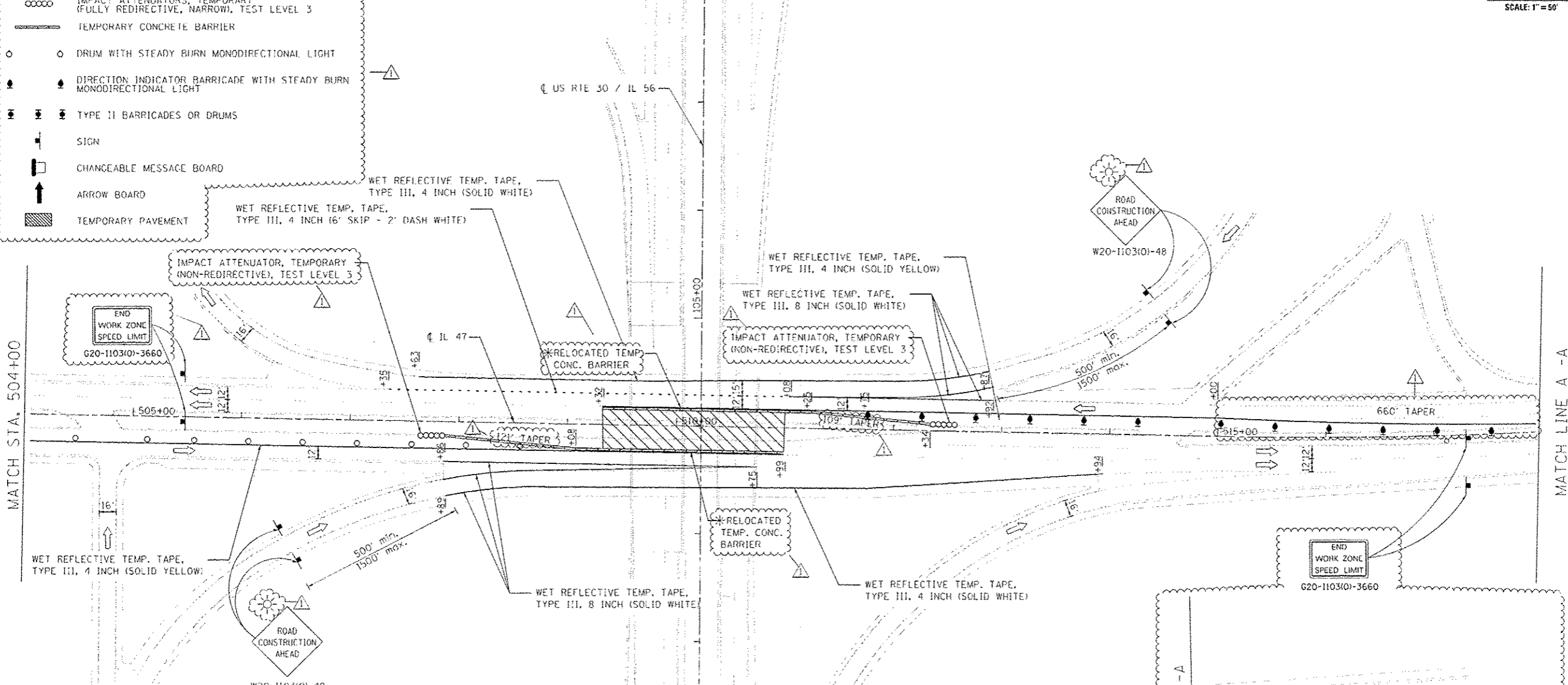
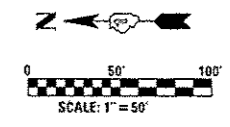
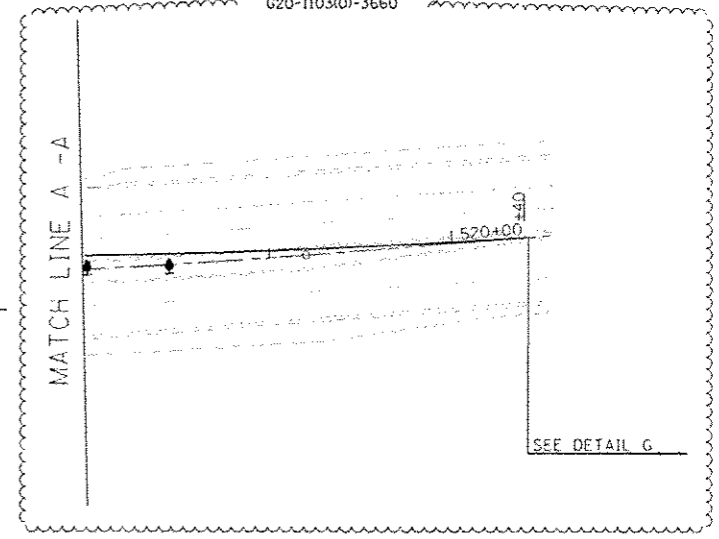


### LEGEND

- WORK AREA
- IMPACT ATTENUATORS, TEMPORARY (FULLY REDIRECTIVE, NARROW), TEST LEVEL 3
- TEMPORARY CONCRETE BARRIER
- DRUM WITH STEADY BURN MONODIRECTIONAL LIGHT
- DIRECTION INDICATOR BARRICADE WITH STEADY BURN MONODIRECTIONAL LIGHT
- TYPE II BARRICADES OR DRUMS
- SIGN
- CHANGEABLE MESSAGE BOARD
- ARROW BOARD
- TEMPORARY PAVEMENT

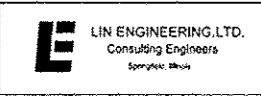


\* RELOCATE TEMP. CONCRETE BARRIER  
 FROM STA 509+31 LT TO STA 511+68 LT  
 FROM STA 508+75 RT TO STA 510+96 RT



### NOTES

1. ALL ADVANCE WARNING SIGNS SHALL BE 2 SETS OF SIGNS ONE LOCATED IN THE BARRIER MEDIAN WHERE AVAILABLE.



USER NAME - KUSERS	DESIGNED - SEW	REVISED - SL 8/30/2013
FLD SCALE -	DRAWN - SEW	REVISED -
FLD DATE - 9/2/2013	CHECKED - ST	REVISED -
	DATE - 11/2011	REVISED -

**STATE OF ILLINOIS  
 DEPARTMENT OF TRANSPORTATION**

<b>MAINTENANCE OF TRAFFIC - STAGE II - IL 47</b>		F.A.P. RTE.	SECTION	COUNTY	TOTAL SHEETS	SHEET NO.
US ROUTE 30 / IL 56 OVER IL 47		573	61 MB-1-7	KANE13	48	13
SCALE: 1"=50'	SHEET NO. 2 OF 2 SHEETS	STA. 504+00 TO STA. 520+40	CONTRACT NO. 60N12			
FED. ROAD DIST. NO. [ILLINOIS] FED. AID PROJECT						