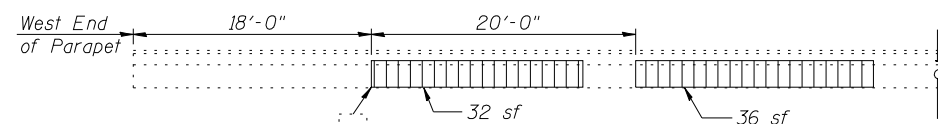
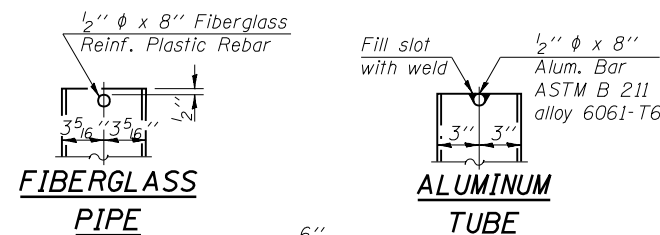


E.B. BRIDGE DECK PLAN



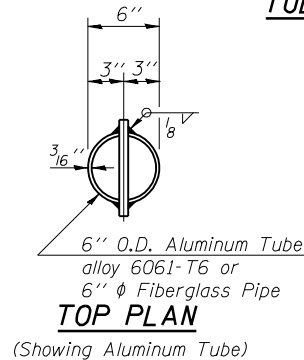
SOUTH PARAPET ELEVATION
(Reflective View Looking South)

Existing Name Plate shall be removed, cleaned and reinstalled at its original location after structural repair of concrete. Cost included with Structural Repair of Concrete.



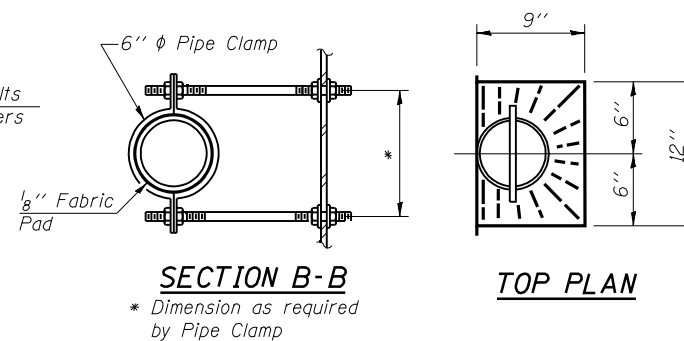
FIBERGLASS PIPE

ALUMINUM TUBE



TOP PLAN

(Showing Aluminum Tube)



SECTION B-B

* Dimension as required by Pipe Clamp

TOP PLAN

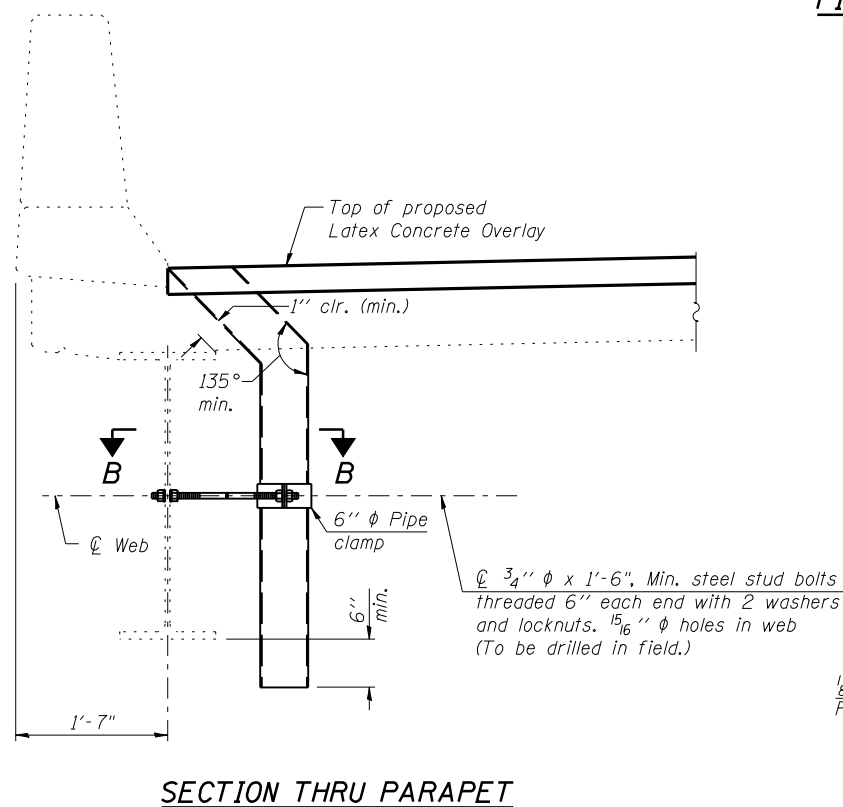
Notes:
Deck Condition Survey performed on 08/2010. There is an estimated 270 sq. yards of Partial Depth Deck Slab Repair required. Partial Depth repairs shall be included with Bridge Deck Scarification. See special provision for Bridge Deck Latex Concrete Overlay.
Repair of the existing deck slab shall include but may not be limited to the areas shown. The actual areas to be repaired will be determined by the Engineer at the time of construction. The Engineer shall show actual locations of repairs on As-Built plans.
Drains to be eliminated shall be removed during Deck Slab Repair. Cost included with Deck Slab Repair (Full Depth, Type II).
Drains shall be located clear of all diaphragms. The exterior surfaces of the floor drains shall be painted with the finish coat as specified in the special provisions for Cleaning and Painting New Metal Structures. The color of the final finish coat shall be Interstate Green, Munsell No. 7.5G 4/8. The exterior surfaces of the drains shall be cleaned according to the Society of Protective Coatings' Spec. SSPC-SP1 prior to painting.
Fiberglass pipe shall conform to ASTM D 2996, with short-time rupture strength hoop tensile stress of 30,000 p.s.i. minimum.
Galvanize clamping device according to AASHTO M232. Cost of clamping device and inserts is included with Floor Drains.

BILL OF MATERIAL

| ITEM | UNIT | TOTAL |
|---|---------|-------|
| Deck Slab Repair (Full Depth, Type II) | Sq. Yd. | 24 |
| Structural Repair of Concrete (Depth equal to or less than 5 in.) | Sq. Ft. | 68 |
| Floor Drains | Each | 12 |
| Protective Shield | Sq. Yd. | 383 |

LEGEND

- Drain Elimination (Included with Full Depth Slab Repair)
- Replace Drain with 6" φ Deck Drain
- Deck Slab Repair (Full Depth, Type II)
- Deck Slab Repair (Partial) (Information Only)
- Structural Repair of Concrete (Depth less than or equal to 5 in.)
- sf Square Feet



SECTION THRU PARAPET

(Sheet 1 of 2)